

OR10H1 Antibody (C-term)
Affinity Purified Rabbit Polyclonal Antibody (Pab)
Catalog # AP10861b**Specification**

OR10H1 Antibody (C-term) - Product Information

Application	FC, WB,E
Primary Accession	O9Y4A9
Other Accession	NP_039228.1
Reactivity	Human
Host	Rabbit
Clonality	Polyclonal
Isotype	Rabbit IgG
Calculated MW	35254
Antigen Region	245-273

OR10H1 Antibody (C-term) - Additional Information**Gene ID** 26539**Other Names**

Olfactory receptor 10H1, Olfactory receptor OR19-27, OR10H1

Target/Specificity

This OR10H1 antibody is generated from rabbits immunized with a KLH conjugated synthetic peptide between 245-273 amino acids from the C-terminal region of human OR10H1.

Dilution

FC~~1:10~50

WB~~1:1000

E~~Use at an assay dependent concentration.

Format

Purified polyclonal antibody supplied in PBS with 0.09% (W/V) sodium azide. This antibody is purified through a protein A column, followed by peptide affinity purification.

Storage

Maintain refrigerated at 2-8°C for up to 2 weeks. For long term storage store at -20°C in small aliquots to prevent freeze-thaw cycles.

Precautions

OR10H1 Antibody (C-term) is for research use only and not for use in diagnostic or therapeutic procedures.

OR10H1 Antibody (C-term) - Protein Information**Name** OR10H1

Function Odorant receptor.

Cellular Location

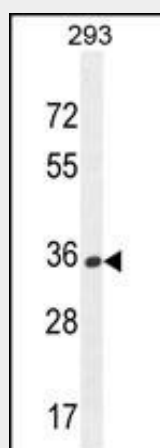
Cell membrane; Multi-pass membrane protein.

OR10H1 Antibody (C-term) - Protocols

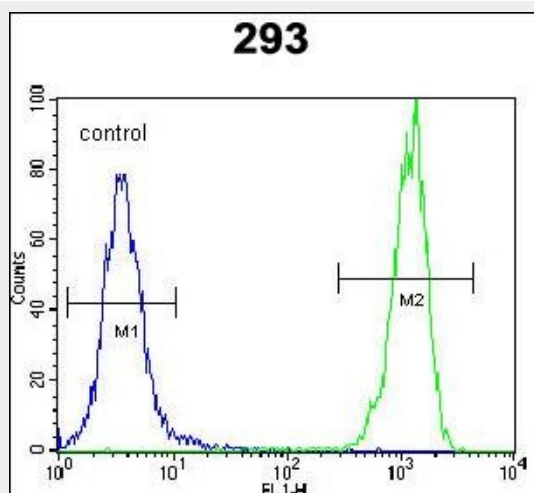
Provided below are standard protocols that you may find useful for product applications.

- [Western Blot](#)
- [Blocking Peptides](#)
- [Dot Blot](#)
- [Immunohistochemistry](#)
- [Immunofluorescence](#)
- [Immunoprecipitation](#)
- [Flow Cytometry](#)
- [Cell Culture](#)

OR10H1 Antibody (C-term) - Images



OR10H1 Antibody (C-term) (Cat. #AP10861b) western blot analysis in 293 cell line lysates (35ug/lane). This demonstrates the OR10H1 antibody detected the OR10H1 protein (arrow).



OR10H1 Antibody (C-term) (Cat. #AP10861b) flow cytometric analysis of 293 cells (right

histogram) compared to a negative control cell (left histogram).FITC-conjugated goat-anti-rabbit secondary antibodies were used for the analysis.

OR10H1 Antibody (C-term) - Background

Olfactory receptors interact with odorant molecules in the nose, to initiate a neuronal response that triggers the perception of a smell. The olfactory receptor proteins are members of a large family of G-protein-coupled receptors (GPCR) arising from single coding-exon genes. Olfactory receptors share a 7-transmembrane domain structure with many neurotransmitter and hormone receptors and are responsible for the recognition and G protein-mediated transduction of odorant signals. The olfactory receptor gene family is the largest in the genome. The nomenclature assigned to the olfactory receptor genes and proteins for this organism is independent of other organisms.

OR10H1 Antibody (C-term) - References

Grimwood, J., et al. Nature 428(6982):529-535(2004)
Malnic, B., et al. Proc. Natl. Acad. Sci. U.S.A. 101(8):2584-2589(2004)
Fuchs, T., et al. Genomics 80(3):295-302(2002)