

**ZC3H15 Antibody (C-term)**  
**Affinity Purified Rabbit Polyclonal Antibody (Pab)**  
**Catalog # AP10865B****Specification**

---

**ZC3H15 Antibody (C-term) - Product Information**

Application	IHC-P, WB,E
Primary Accession	<a href="#">Q8WU90</a>
Other Accession	<a href="#">NP_060941.2</a>
Reactivity	Human
Host	Rabbit
Clonality	Polyclonal
Isotype	Rabbit IgG
Calculated MW	48602
Antigen Region	367-395

**ZC3H15 Antibody (C-term) - Additional Information****Gene ID** 55854**Other Names**

Zinc finger CCCH domain-containing protein 15, DRG family-regulatory protein 1, Likely ortholog of mouse immediate early response erythropoietin 4, ZC3H15, DFRP1, LEREPO4

**Target/Specificity**

This ZC3H15 antibody is generated from rabbits immunized with a KLH conjugated synthetic peptide between 367-395 amino acids from the C-terminal region of human ZC3H15.

**Dilution**

IHC-P~~1:50~100

WB~~1:1000

E~~Use at an assay dependent concentration.

**Format**

Purified polyclonal antibody supplied in PBS with 0.09% (W/V) sodium azide. This antibody is purified through a protein A column, followed by peptide affinity purification.

**Storage**

Maintain refrigerated at 2-8°C for up to 2 weeks. For long term storage store at -20°C in small aliquots to prevent freeze-thaw cycles.

**Precautions**

ZC3H15 Antibody (C-term) is for research use only and not for use in diagnostic or therapeutic procedures.

**ZC3H15 Antibody (C-term) - Protein Information****Name** ZC3H15

**Synonyms** DFRP1, LEREPO4

**Function** Protects DRG1 from proteolytic degradation (PubMed:[19819225](#)). Stimulates DRG1 GTPase activity likely by increasing the affinity for the potassium ions (PubMed:[23711155](#)).

**Cellular Location**

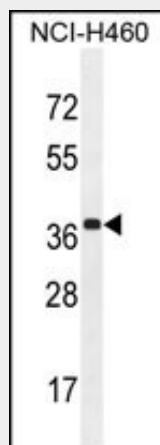
Cytoplasm. Nucleus. Note=The DRG1- DFRP2/ZC3H15 complex associates with polysomes

**ZC3H15 Antibody (C-term) - Protocols**

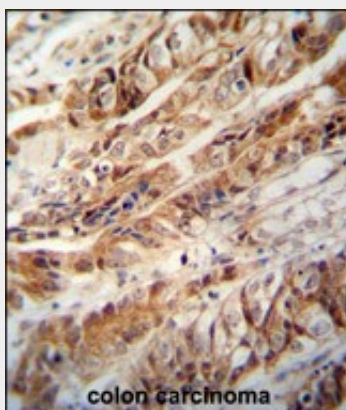
Provided below are standard protocols that you may find useful for product applications.

- [Western Blot](#)
- [Blocking Peptides](#)
- [Dot Blot](#)
- [Immunohistochemistry](#)
- [Immunofluorescence](#)
- [Immunoprecipitation](#)
- [Flow Cytometry](#)
- [Cell Culture](#)

**ZC3H15 Antibody (C-term) - Images**



ZC3H15 Antibody (C-term) (Cat. #AP10865b) western blot analysis in NCI-H460 cell line lysates (35ug/lane). This demonstrates the ZC3H15 antibody detected the ZC3H15 protein (arrow).



ZC3H15 antibody (C-term) (Cat. #AP10865b) immunohistochemistry analysis in formalin fixed

and paraffin embedded human colon carcinoma followed by peroxidase conjugation of the secondary antibody and DAB staining. This data demonstrates the use of the ZC3H15 antibody (C-term) for immunohistochemistry. Clinical relevance has not been evaluated.

#### **ZC3H15 Antibody (C-term) - Background**

Protects DRG1 from proteolytic degradation (By similarity).

#### **ZC3H15 Antibody (C-term) - References**

Lamesch, P., et al. Genomics 89(3):307-315(2007)  
Olsen, J.V., et al. Cell 127(3):635-648(2006)  
Gregory, R.C., et al. Cytokine 12(7):845-857(2000)