

**GLB1L2 Antibody (C-term)**  
**Affinity Purified Rabbit Polyclonal Antibody (Pab)**  
**Catalog # AP10868b****Specification**

---

**GLB1L2 Antibody (C-term) - Product Information**

Application	IHC-P, WB,E
Primary Accession	<a href="#">Q8IW92</a>
Other Accession	<a href="#">NP_612351.2</a>
Reactivity	Human
Host	Rabbit
Clonality	Polyclonal
Isotype	Rabbit IgG
Calculated MW	72079
Antigen Region	479-507

**GLB1L2 Antibody (C-term) - Additional Information****Gene ID** 89944**Other Names**

Beta-galactosidase-1-like protein 2, 321-, GLB1L2

**Target/Specificity**

This GLB1L2 antibody is generated from rabbits immunized with a KLH conjugated synthetic peptide between 479-507 amino acids from the C-terminal region of human GLB1L2.

**Dilution**

IHC-P~~1:50~100

WB~~1:1000

E~~Use at an assay dependent concentration.

**Format**

Purified polyclonal antibody supplied in PBS with 0.09% (W/V) sodium azide. This antibody is purified through a protein A column, followed by peptide affinity purification.

**Storage**

Maintain refrigerated at 2-8°C for up to 2 weeks. For long term storage store at -20°C in small aliquots to prevent freeze-thaw cycles.

**Precautions**

GLB1L2 Antibody (C-term) is for research use only and not for use in diagnostic or therapeutic procedures.

**GLB1L2 Antibody (C-term) - Protein Information****Name** GLB1L2

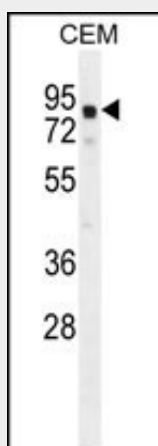
**Cellular Location**  
Secreted.

### GLB1L2 Antibody (C-term) - Protocols

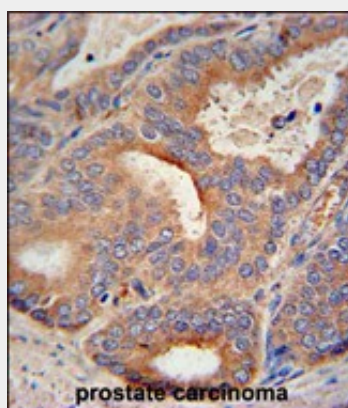
Provided below are standard protocols that you may find useful for product applications.

- [Western Blot](#)
- [Blocking Peptides](#)
- [Dot Blot](#)
- [Immunohistochemistry](#)
- [Immunofluorescence](#)
- [Immunoprecipitation](#)
- [Flow Cytometry](#)
- [Cell Culture](#)

### GLB1L2 Antibody (C-term) - Images



GLB1L2 Antibody (C-term) (Cat. #AP10868b) western blot analysis in CEM cell line lysates (35ug/lane). This demonstrates the GLB1L2 antibody detected the GLB1L2 protein (arrow).



GLB1L2 antibody (C-term) (Cat. #AP10868b) immunohistochemistry analysis in formalin fixed and paraffin embedded human prostate carcinoma followed by peroxidase conjugation of the secondary antibody and DAB staining. This data demonstrates the use of the GLB1L2 antibody (C-term) for immunohistochemistry. Clinical relevance has not been evaluated.

### GLB1L2 Antibody (C-term) - References

Clark, H.F., et al. Genome Res. 13(10):2265-2270(2003)