

**PTCD2 Antibody (Center)**  
**Affinity Purified Rabbit Polyclonal Antibody (Pab)**  
**Catalog # AP10869C**

**Specification**

---

**PTCD2 Antibody (Center) - Product Information**

Application	WB,E
Primary Accession	<a href="#">Q8WV60</a>
Other Accession	<a href="#">Q8R3K3</a> , <a href="#">NP_079030.3</a>
Reactivity	Human, Mouse
Host	Rabbit
Clonality	Polyclonal
Isotype	Rabbit IgG
Calculated MW	43968
Antigen Region	102-131

**PTCD2 Antibody (Center) - Additional Information**

**Gene ID** 79810

**Other Names**

Pentatricopeptide repeat-containing protein 2, mitochondrial, PTCD2

**Target/Specificity**

This PTCD2 antibody is generated from rabbits immunized with a KLH conjugated synthetic peptide between 102-131 amino acids from the Central region of human PTCD2.

**Dilution**

WB~~1:1000

**Format**

Purified polyclonal antibody supplied in PBS with 0.09% (W/V) sodium azide. This antibody is purified through a protein A column, followed by peptide affinity purification.

**Storage**

Maintain refrigerated at 2-8°C for up to 2 weeks. For long term storage store at -20°C in small aliquots to prevent freeze-thaw cycles.

**Precautions**

PTCD2 Antibody (Center) is for research use only and not for use in diagnostic or therapeutic procedures.

**PTCD2 Antibody (Center) - Protein Information**

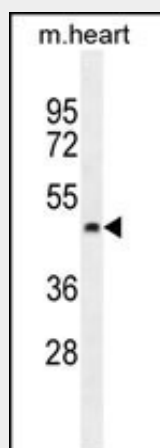
**Name** PTCD2

**Function** Involved in mitochondrial RNA maturation and mitochondrial respiratory chain function.

**Cellular Location**  
Mitochondrion.**PTCD2 Antibody (Center) - Protocols**

Provided below are standard protocols that you may find useful for product applications.

- [Western Blot](#)
- [Blocking Peptides](#)
- [Dot Blot](#)
- [Immunohistochemistry](#)
- [Immunofluorescence](#)
- [Immunoprecipitation](#)
- [Flow Cytometry](#)
- [Cell Culture](#)

**PTCD2 Antibody (Center) - Images**

PTCD2 Antibody (Center) (Cat. #AP10869c) western blot analysis in mouse heart tissue lysates (35ug/lane). This demonstrates the PTCD2 antibody detected the PTCD2 protein (arrow).

**PTCD2 Antibody (Center) - References**

Kimura, K., et al. Genome Res. 16(1):55-65(2006)