

KRT80 Antibody (C-term)
Affinity Purified Rabbit Polyclonal Antibody (Pab)
Catalog # AP10874b

Specification

KRT80 Antibody (C-term) - Product Information

Application	WB,E
Primary Accession	Q6KB66
Other Accession	NP_872313.2
Reactivity	Human
Host	Rabbit
Clonality	Polyclonal
Isotype	Rabbit IgG
Antigen Region	404-432

KRT80 Antibody (C-term) - Additional Information

Gene ID 144501

Other Names

Keratin, type II cytoskeletal 80, Cytokeratin-80, CK-80, Keratin-80, K80, Type-II keratin Kb20, KRT80, KB20

Target/Specificity

This KRT80 antibody is generated from rabbits immunized with a KLH conjugated synthetic peptide between 404-432 amino acids from the C-terminal region of human KRT80.

Dilution

WB~~1:1000

Format

Purified polyclonal antibody supplied in PBS with 0.09% (W/V) sodium azide. This antibody is purified through a protein A column, followed by peptide affinity purification.

Storage

Maintain refrigerated at 2-8°C for up to 2 weeks. For long term storage store at -20°C in small aliquots to prevent freeze-thaw cycles.

Precautions

KRT80 Antibody (C-term) is for research use only and not for use in diagnostic or therapeutic procedures.

KRT80 Antibody (C-term) - Protein Information

Name KRT80

Synonyms KB20

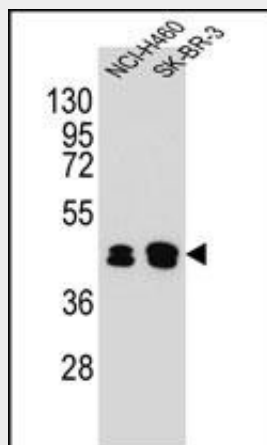
Tissue Location

Weakly expressed in tongue, but not skin or in any other tissues or organs examined.

KRT80 Antibody (C-term) - Protocols

Provided below are standard protocols that you may find useful for product applications.

- [Western Blot](#)
- [Blocking Peptides](#)
- [Dot Blot](#)
- [Immunohistochemistry](#)
- [Immunofluorescence](#)
- [Immunoprecipitation](#)
- [Flow Cytometry](#)
- [Cell Culture](#)

KRT80 Antibody (C-term) - Images

KRT80 Antibody (C-term) (Cat. #AP10874b) western blot analysis in NCI-H460,SK-BR-3 cell line lysates (35ug/lane).This demonstrates the KRT80 antibody detected the KRT80 protein (arrow).

KRT80 Antibody (C-term) - Background

Keratins are intermediate filament proteins responsible for the structural integrity of epithelial cells and are subdivided into epithelial keratins and hair keratins. This gene's expression profile shows that it encodes a type II epithelial keratin, although structurally the encoded protein is more like a type II hair keratin. This protein is involved in cell differentiation, localizing near desmosomal plaques in earlier stages of differentiation but then dispersing throughout the cytoplasm in terminally differentiating cells. The type II keratins are clustered in a region of chromosome 12q13. Two transcript variants encoding two different fully functional isoforms have been found for this gene.

KRT80 Antibody (C-term) - References

Langbein, L., et al. J. Biol. Chem. 285(47):36909-36921(2010)
Lamesch, P., et al. Genomics 89(3):307-315(2007)

Schweizer, J., et al. J. Cell Biol. 174(2):169-174(2006)

Rogers, M.A., et al. J. Invest. Dermatol. 124(3):536-544(2005)