

MCART2 Antibody (N-term)
Affinity Purified Rabbit Polyclonal Antibody (Pab)
Catalog # AP10890a**Specification**

MCART2 Antibody (N-term) - Product Information

Application	FC, WB,E
Primary Accession	Q3SY17
Other Accession	NP_001029344.2
Reactivity	Human
Host	Rabbit
Clonality	Polyclonal
Isotype	Rabbit IgG
Calculated MW	33721
Antigen Region	46-75

MCART2 Antibody (N-term) - Additional Information**Gene ID** 147407**Other Names**

Solute carrier family 25 member 52, Mitochondrial carrier triple repeat protein 2, SLC25A52, MCART2

Target/Specificity

This MCART2 antibody is generated from rabbits immunized with a KLH conjugated synthetic peptide between 46-75 amino acids from the N-terminal region of human MCART2.

Dilution

FC~~1:10~50

WB~~1:1000

E~~Use at an assay dependent concentration.

Format

Purified polyclonal antibody supplied in PBS with 0.09% (W/V) sodium azide. This antibody is purified through a protein A column, followed by peptide affinity purification.

Storage

Maintain refrigerated at 2-8°C for up to 2 weeks. For long term storage store at -20°C in small aliquots to prevent freeze-thaw cycles.

Precautions

MCART2 Antibody (N-term) is for research use only and not for use in diagnostic or therapeutic procedures.

MCART2 Antibody (N-term) - Protein Information

Name SLC25A52 {ECO:0000303|PubMed:32906142, ECO:0000312|HGNC:HGNC:23324}

Function Mitochondrial membrane carrier protein that mediates the import of NAD(+) into mitochondria (PubMed:[32906142](#)). Compared to SLC25A51, SLC25A52-mediated transport is not essential for the import of NAD(+) in mitochondria (PubMed:[32906142](#)). The transport mechanism, uniport or antiport, its electrogenicity and substrate selectivity, remain to be elucidated.

Cellular Location

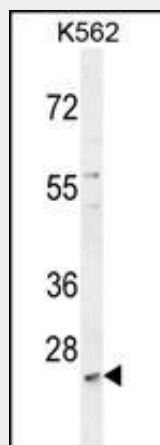
Mitochondrion inner membrane; Multi-pass membrane protein

MCART2 Antibody (N-term) - Protocols

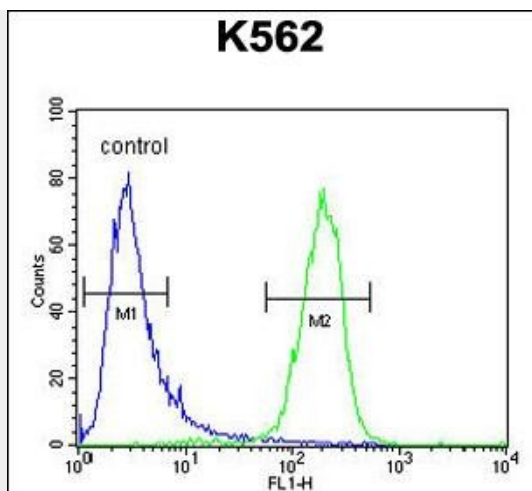
Provided below are standard protocols that you may find useful for product applications.

- [Western Blot](#)
- [Blocking Peptides](#)
- [Dot Blot](#)
- [Immunohistochemistry](#)
- [Immunofluorescence](#)
- [Immunoprecipitation](#)
- [Flow Cytometry](#)
- [Cell Culture](#)

MCART2 Antibody (N-term) - Images



MCART2 Antibody (N-term) (Cat. #AP10890a) western blot analysis in K562 cell line lysates (35ug/lane). This demonstrates the MCART2 antibody detected the MCART2 protein (arrow).



MCART2 Antibody (N-term) (Cat. #AP10890a) flow cytometric analysis of K562 cells (right histogram) compared to a negative control cell (left histogram). FITC-conjugated goat-anti-rabbit secondary antibodies were used for the analysis.

MCART2 Antibody (N-term) - Background

This gene is similar to the mitochondrial carrier triple repeat 1 gene on chromosome 9. The gene is intronless and may be an evolving pseudogene; however, it is transcribed and it contains a full-length coding region so it is currently classified as a protein-coding locus.

MCART2 Antibody (N-term) - References

Kimura, K., et al. Genome Res. 16(1):55-65(2006)
Gerhard, D.S., et al. Genome Res. 14 (10B), 2121-2127 (2004) :