

LCE1A Antibody (C-term)
Affinity Purified Rabbit Polyclonal Antibody (Pab)
Catalog # AP10891b

Specification

LCE1A Antibody (C-term) - Product Information

Application	WB, IHC-P,E
Primary Accession	Q5T7P2
Other Accession	NP_848125.1
Reactivity	Human
Host	Rabbit
Clonality	Polyclonal
Isotype	Rabbit IgG
Antigen Region	54-83

LCE1A Antibody (C-term) - Additional Information

Gene ID 353131

Other Names

Late cornified envelope protein 1A, Late envelope protein 1, LCE1A, LEP1

Target/Specificity

This LCE1A antibody is generated from rabbits immunized with a KLH conjugated synthetic peptide between 54-83 amino acids from the C-terminal region of human LCE1A.

Dilution

WB~~1:1000
IHC-P~~1:50~100

Format

Purified polyclonal antibody supplied in PBS with 0.09% (W/V) sodium azide. This antibody is purified through a protein A column, followed by peptide affinity purification.

Storage

Maintain refrigerated at 2-8°C for up to 2 weeks. For long term storage store at -20°C in small aliquots to prevent freeze-thaw cycles.

Precautions

LCE1A Antibody (C-term) is for research use only and not for use in diagnostic or therapeutic procedures.

LCE1A Antibody (C-term) - Protein Information

Name LCE1A

Synonyms LEP1

Function Precursors of the cornified envelope of the stratum corneum.

Tissue Location

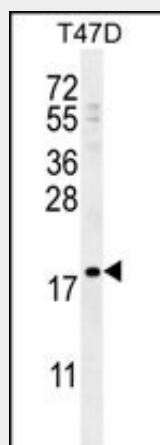
Skin-specific. Expression was readily detected in adult trunk skin, adult arm skin, fetal skin, penial skin, vulva, esophagus and tongue. Not expressed in the cervix, rectum, lung, colon, or placenta.

LCE1A Antibody (C-term) - Protocols

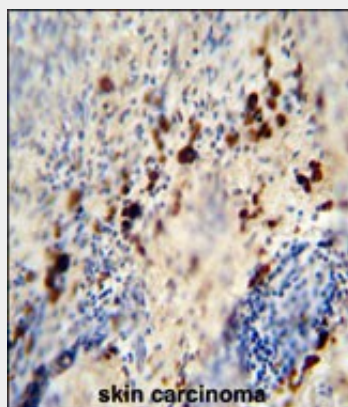
Provided below are standard protocols that you may find useful for product applications.

- [Western Blot](#)
- [Blocking Peptides](#)
- [Dot Blot](#)
- [Immunohistochemistry](#)
- [Immunofluorescence](#)
- [Immunoprecipitation](#)
- [Flow Cytometry](#)
- [Cell Culture](#)

LCE1A Antibody (C-term) - Images



LCE1A Antibody (C-term) (Cat. #AP10891b) western blot analysis in T47D cell line lysates (35ug/lane). This demonstrates the LCE1A antibody detected the LCE1A protein (arrow).



LCE1A antibody (C-term) (Cat. #AP10891b) immunohistochemistry analysis in formalin fixed and paraffin embedded human skin carcinoma followed by peroxidase conjugation of the secondary

antibody and DAB staining. This data demonstrates the use of the LCE1A antibody (C-term) for immunohistochemistry. Clinical relevance has not been evaluated.

LCE1A Antibody (C-term) - Background

LCE1A belongs to the late cornified envelope (LCE) gene cluster within the epidermal differentiation complex (EDC) on chromosome 1. The LCE cluster contains multiple conserved genes that encode stratum corneum proteins, and these genes are expressed relatively late during fetal assembly of the skin cornified envelope (Jackson et al., 2005 [PubMed 15854049]). For further information on the LCE gene cluster, see GENE FAMILY below.

LCE1A Antibody (C-term) - References

Jackson, B., et al. J. Invest. Dermatol. 124(5):1062-1070(2005)
Marshall, D., et al. Proc. Natl. Acad. Sci. U.S.A. 98(23):13031-13036(2001)