

LMF2 Antibody (C-term)
Affinity Purified Rabbit Polyclonal Antibody (Pab)
Catalog # AP10900b

Specification

LMF2 Antibody (C-term) - Product Information

Application	FC, WB,E
Primary Accession	O9BU23
Other Accession	NP_149977.1
Reactivity	Human
Host	Rabbit
Clonality	Polyclonal
Isotype	Rabbit IgG
Antigen Region	535-564

LMF2 Antibody (C-term) - Additional Information

Gene ID 91289

Other Names

Lipase maturation factor 2, Transmembrane protein 112B, Transmembrane protein 153, LMF2, TMEM112B, TMEM153

Target/Specificity

This LMF2 antibody is generated from rabbits immunized with a KLH conjugated synthetic peptide between 535-564 amino acids from the C-terminal region of human LMF2.

Dilution

FC~~1:10~50

WB~~1:1000

E~~Use at an assay dependent concentration.

Format

Purified polyclonal antibody supplied in PBS with 0.09% (W/V) sodium azide. This antibody is purified through a protein A column, followed by peptide affinity purification.

Storage

Maintain refrigerated at 2-8°C for up to 2 weeks. For long term storage store at -20°C in small aliquots to prevent freeze-thaw cycles.

Precautions

LMF2 Antibody (C-term) is for research use only and not for use in diagnostic or therapeutic procedures.

LMF2 Antibody (C-term) - Protein Information

Name LMF2

Synonyms TMEM112B, TMEM153

Function Involved in the maturation of specific proteins in the endoplasmic reticulum. May be required for maturation and transport of active lipoprotein lipase (LPL) through the secretory pathway (By similarity).

Cellular Location

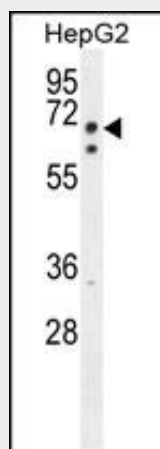
Endoplasmic reticulum membrane; Multi-pass membrane protein

LMF2 Antibody (C-term) - Protocols

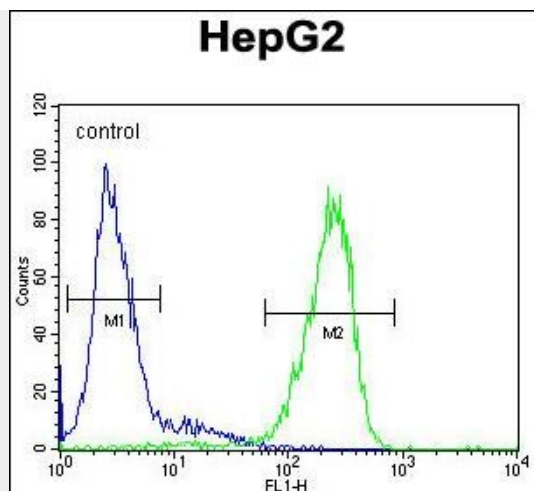
Provided below are standard protocols that you may find useful for product applications.

- [Western Blot](#)
- [Blocking Peptides](#)
- [Dot Blot](#)
- [Immunohistochemistry](#)
- [Immunofluorescence](#)
- [Immunoprecipitation](#)
- [Flow Cytometry](#)
- [Cell Culture](#)

LMF2 Antibody (C-term) - Images



LMF2 Antibody (C-term) (Cat. #AP10900b) western blot analysis in HepG2 cell line lysates (35ug/lane). This demonstrates the LMF2 antibody detected the LMF2 protein (arrow).



LMF2 Antibody (C-term) (Cat. #AP10900b) flow cytometric analysis of HepG2 cells (right histogram) compared to a negative control cell (left histogram). FITC-conjugated goat-anti-rabbit secondary antibodies were used for the analysis.

LMF2 Antibody (C-term) - Background

Involved in the maturation of specific proteins in the endoplasmic reticulum. May be required for maturation and transport of active lipoprotein lipase (LPL) through the secretory pathway (By similarity).

LMF2 Antibody (C-term) - References

Collins, J.E., et al. Genome Biol. 5 (10), R84 (2004) :