

**AMN1 Antibody (N-term)**  
**Affinity Purified Rabbit Polyclonal Antibody (Pab)**  
**Catalog # AP10901a****Specification**

---

**AMN1 Antibody (N-term) - Product Information**

Application	WB, FC,E
Primary Accession	<a href="#">Q8IY45</a>
Other Accession	<a href="#">Q32L08</a> , <a href="#">NP_001106873.1</a>
Reactivity	Human
Predicted	Bovine
Host	Rabbit
Clonality	Polyclonal
Isotype	Rabbit IgG
Calculated MW	28408
Antigen Region	13-42

**AMN1 Antibody (N-term) - Additional Information****Gene ID** 196394**Other Names**

Protein AMN1 homolog, AMN1

**Target/Specificity**

This AMN1 antibody is generated from rabbits immunized with a KLH conjugated synthetic peptide between 13-42 amino acids from the N-terminal region of human AMN1.

**Dilution**WB~~1:1000  
FC~~1:10~50**Format**

Purified polyclonal antibody supplied in PBS with 0.09% (W/V) sodium azide. This antibody is purified through a protein A column, followed by peptide affinity purification.

**Storage**

Maintain refrigerated at 2-8°C for up to 2 weeks. For long term storage store at -20°C in small aliquots to prevent freeze-thaw cycles.

**Precautions**

AMN1 Antibody (N-term) is for research use only and not for use in diagnostic or therapeutic procedures.

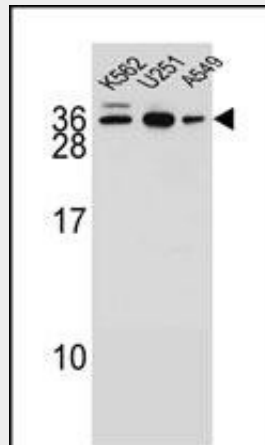
**AMN1 Antibody (N-term) - Protein Information****Name** AMN1

## AMN1 Antibody (N-term) - Protocols

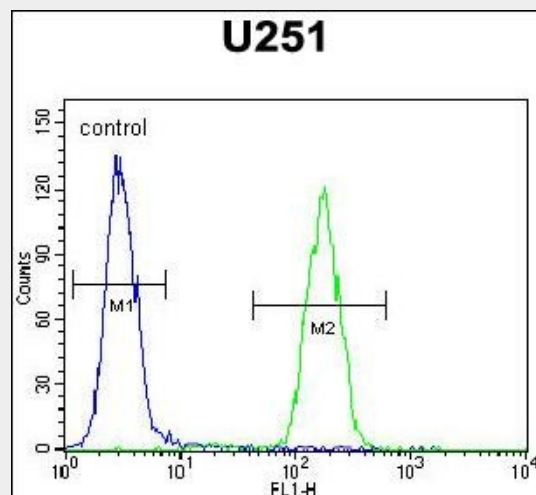
Provided below are standard protocols that you may find useful for product applications.

- [Western Blot](#)
- [Blocking Peptides](#)
- [Dot Blot](#)
- [Immunohistochemistry](#)
- [Immunofluorescence](#)
- [Immunoprecipitation](#)
- [Flow Cytometry](#)
- [Cell Culture](#)

## AMN1 Antibody (N-term) - Images



AMN1 Antibody (N-term) (Cat. #AP10901a) western blot analysis in K562,U251,A549 cell line lysates (35ug/lane).This demonstrates the AMN1 antibody detected the AMN1 protein (arrow).



AMN1 Antibody (N-term) (Cat. #AP10901a) flow cytometric analysis of U251 cells (right histogram) compared to a negative control cell (left histogram).FITC-conjugated goat-anti-rabbit secondary antibodies were used for the analysis.

## AMN1 Antibody (N-term) - Background

AMN1 belongs to the AMN1 family. The exact function of AMN1 remains unknown.

**AMN1 Antibody (N-term) - References**

Ota, T., et al. Nat. Genet. 36(1):40-45(2004)

Strausberg, R.L., et al. Proc. Natl. Acad. Sci. U.S.A. 99(26):16899-16903(2002)