

**EFHB Antibody (N-term)**  
**Affinity Purified Rabbit Polyclonal Antibody (Pab)**  
**Catalog # AP10904a****Specification**

---

**EFHB Antibody (N-term) - Product Information**

Application	FC, IHC-P, WB,E
Primary Accession	<a href="#">Q8N7U6</a>
Other Accession	<a href="#">NP_653316.3</a>
Reactivity	Human
Host	Rabbit
Clonality	Polyclonal
Isotype	Rabbit IgG
Calculated MW	93802
Antigen Region	1-30

**EFHB Antibody (N-term) - Additional Information****Gene ID** 151651**Other Names**

EF-hand domain-containing family member B, EFHB

**Target/Specificity**

This EFHB antibody is generated from rabbits immunized with a KLH conjugated synthetic peptide between 1-30 amino acids from the N-terminal region of human EFHB.

**Dilution**

FC~~1:10~50

IHC-P~~1:50~100

WB~~1:1000

E~~Use at an assay dependent concentration.

**Format**

Purified polyclonal antibody supplied in PBS with 0.09% (W/V) sodium azide. This antibody is purified through a protein A column, followed by peptide affinity purification.

**Storage**

Maintain refrigerated at 2-8°C for up to 2 weeks. For long term storage store at -20°C in small aliquots to prevent freeze-thaw cycles.

**Precautions**

EFHB Antibody (N-term) is for research use only and not for use in diagnostic or therapeutic procedures.

**EFHB Antibody (N-term) - Protein Information****Name** EFHB ([HGNC:26330](#))

## Synonyms CFAP21

**Function** Microtubule inner protein (MIP) part of the dynein-decorated doublet microtubules (DMTs) in cilia axoneme, which is required for motile cilia beating (PubMed:[36191189](#)). Cytosolic sensor for calcium, modulates the interaction of STIM1 and ORAI1 upon store depletion and the activation of store-operated  $\text{Ca}^{2+}$  entry (SOCE) and NFAT translocation from cytosol to nucleus (PubMed:[30481768](#)).

## Cellular Location

Cytoplasm, cytoskeleton, cilium axoneme. Cytoplasm, cytoskeleton, flagellum axoneme {ECO:0000250|UniProtKB:Q8CDU5}. Cytoplasm

## Tissue Location

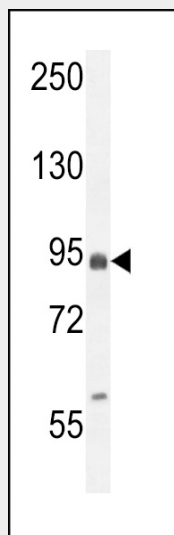
Expressed in airway epithelial cells.

## EFHB Antibody (N-term) - Protocols

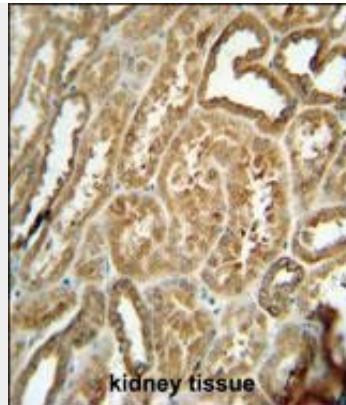
Provided below are standard protocols that you may find useful for product applications.

- [Western Blot](#)
- [Blocking Peptides](#)
- [Dot Blot](#)
- [Immunohistochemistry](#)
- [Immunofluorescence](#)
- [Immunoprecipitation](#)
- [Flow Cytometry](#)
- [Cell Culture](#)

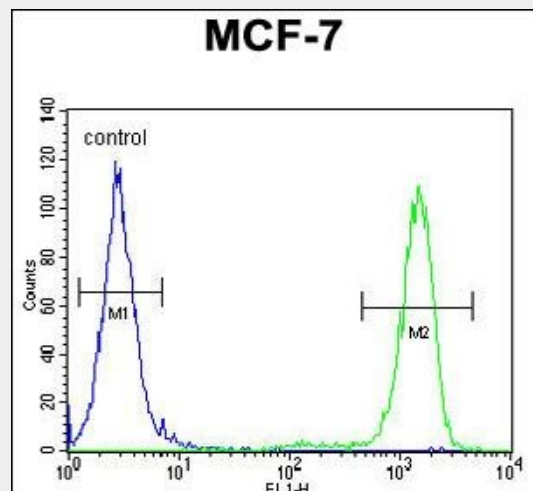
## EFHB Antibody (N-term) - Images



EFHB Antibody (N-term) (Cat. #AP10904a) western blot analysis in MCF-7 cell line lysates (35ug/lane). This demonstrates the EFHB antibody detected the EFHB protein (arrow).



EFHB antibody (N-term) (Cat. #AP10904a) immunohistochemistry analysis in formalin fixed and paraffin embedded human kidney tissue followed by peroxidase conjugation of the secondary antibody and DAB staining. This data demonstrates the use of the EFHB antibody (N-term) for immunohistochemistry. Clinical relevance has not been evaluated.



EFHB Antibody (N-term) (Cat. #AP10904a) flow cytometric analysis of MCF-7 cells (right histogram) compared to a negative control cell (left histogram). FITC-conjugated goat-anti-rabbit secondary antibodies were used for the analysis.

#### EFHB Antibody (N-term) - Background

EFHB contains two EF-hand domains. There are three named isoforms.

#### EFHB Antibody (N-term) - References

Rose, J. Phd, et al. Mol. Med. (2010) In press :

#### EFHB Antibody (N-term) - Citations

- [EFHB is a Novel Cytosolic Ca<sup>2+</sup> Sensor That Modulates STIM1-SARAF Interaction.](#)