

POU2AF2 Antibody (C-term)
Affinity Purified Rabbit Polyclonal Antibody (Pab)
Catalog # AP10921b

Specification

POU2AF2 Antibody (C-term) - Product Information

Application	WB, IHC-P, FC,E
Primary Accession	Q8IXP5
Other Accession	NP_940900.1
Reactivity	Human
Host	Rabbit
Clonality	Polyclonal
Isotype	Rabbit IgG
Antigen Region	187-215

POU2AF2 Antibody (C-term) - Additional Information

Gene ID 341032

Other Names

Uncharacterized protein C11orf53, C11orf53

Target/Specificity

This C11orf53 antibody is generated from rabbits immunized with a KLH conjugated synthetic peptide between 187-215 amino acids from the C-terminal region of human C11orf53.

Dilution

WB~~1:1000

IHC-P~~1:50~100

FC~~1:10~50

E~~Use at an assay dependent concentration.

Format

Purified polyclonal antibody supplied in PBS with 0.09% (W/V) sodium azide. This antibody is purified through a protein A column, followed by peptide affinity purification.

Storage

Maintain refrigerated at 2-8°C for up to 2 weeks. For long term storage store at -20°C in small aliquots to prevent freeze-thaw cycles.

Precautions

POU2AF2 Antibody (C-term) is for research use only and not for use in diagnostic or therapeutic procedures.

POU2AF2 Antibody (C-term) - Protein Information

Name OCAT1

Function Transcriptional coactivator of POU2F3 (PubMed:[35576971](#), PubMed:[36197978](#)). This complex drives the development of tuft cells, a rare chemosensory cells that coordinate immune and neural functions within mucosal epithelial tissues (PubMed:[35576971](#)).

Cellular Location

Cytoplasm, cytosol. Nucleus Note=Recruited to chromatin by POU2F3.

Tissue Location

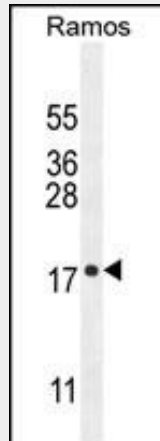
Expressed in tuft cells of colon mucosa, as well as in small intestine and thymus (PubMed:35576971)

POU2AF2 Antibody (C-term) - Protocols

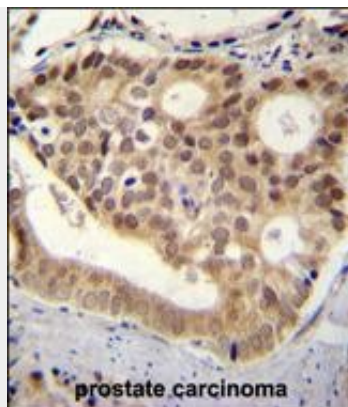
Provided below are standard protocols that you may find useful for product applications.

- [Western Blot](#)
- [Blocking Peptides](#)
- [Dot Blot](#)
- [Immunohistochemistry](#)
- [Immunofluorescence](#)
- [Immunoprecipitation](#)
- [Flow Cytometry](#)
- [Cell Culture](#)

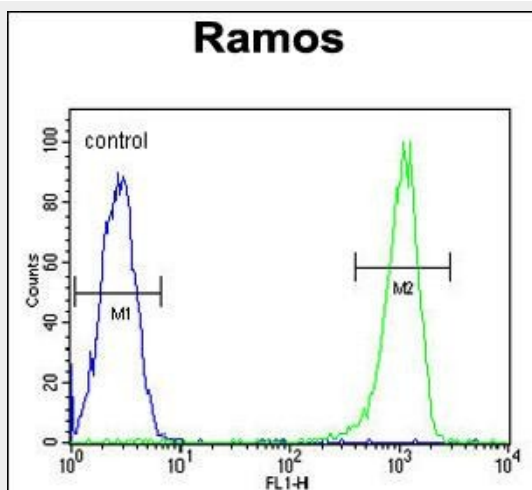
POU2AF2 Antibody (C-term) - Images



C11orf53 Antibody (C-term) (Cat. #AP10921b) western blot analysis in Ramos cell line lysates (35ug/lane). This demonstrates the C11orf53 antibody detected the C11orf53 protein (arrow).



C11orf53 antibody (C-term) (Cat. #AP10921b) immunohistochemistry analysis in formalin fixed and paraffin embedded human pancreas tissue followed by peroxidase conjugation of the secondary antibody and DAB staining. This data demonstrates the use of C11orf53 antibody (C-term) for immunohistochemistry. Clinical relevance has not been evaluated.



C11orf53 Antibody (C-term) (Cat. #AP10921b) flow cytometric analysis of Ramos cells (right histogram) compared to a negative control cell (left histogram). FITC-conjugated goat-anti-rabbit secondary antibodies were used for the analysis.

POU2AF2 Antibody (C-term) - Background

The specific function of C11orf53 remains unknown.

POU2AF2 Antibody (C-term) - References

Pittman, A.M., et al. Hum. Mol. Genet. 17(23):3720-3727(2008)
Lamesch, P., et al. Genomics 89(3):307-315(2007)