

**CEBPG Antibody (C-term)**  
**Affinity Purified Rabbit Polyclonal Antibody (Pab)**  
**Catalog # AP10951b**

**Specification**

---

**CEBPG Antibody (C-term) - Product Information**

Application	WB,E
Primary Accession	<a href="#">P53567</a>
Other Accession	<a href="#">P26801</a> , <a href="#">P53568</a> , <a href="#">Q3T0B9</a> , <a href="#">NP_001797.1</a>
Reactivity	Human, Mouse
Predicted	Bovine, Rat
Host	Rabbit
Clonality	Polyclonal
Isotype	Rabbit IgG
Antigen Region	83-110

**CEBPG Antibody (C-term) - Additional Information**

**Gene ID** 1054

**Other Names**

CCAAT/enhancer-binding protein gamma, C/EBP gamma, CEBPG

**Target/Specificity**

This CEBPG antibody is generated from rabbits immunized with a KLH conjugated synthetic peptide between 83-110 amino acids from the C-terminal region of human CEBPG.

**Dilution**

WB~~1:1000

**Format**

Purified polyclonal antibody supplied in PBS with 0.09% (W/V) sodium azide. This antibody is purified through a protein A column, followed by peptide affinity purification.

**Storage**

Maintain refrigerated at 2-8°C for up to 2 weeks. For long term storage store at -20°C in small aliquots to prevent freeze-thaw cycles.

**Precautions**

CEBPG Antibody (C-term) is for research use only and not for use in diagnostic or therapeutic procedures.

**CEBPG Antibody (C-term) - Protein Information**

**Name** CEBPG

**Function** Transcription factor that binds to the promoter and the enhancer regions of target genes. Binds to the enhancer element PRE-I (positive regulatory element-I) of the IL-4 gene

(PubMed:[7665092](#)). Binds to the promoter and the enhancer of the immunoglobulin heavy chain. Binds to GPE1, a cis-acting element in the G-CSF gene promoter.

#### Cellular Location

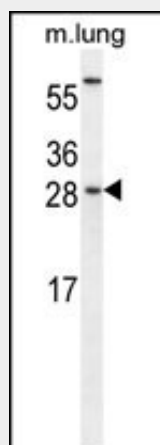
Nucleus {ECO:0000250|UniProtKB:P53568}.

### CEBPG Antibody (C-term) - Protocols

Provided below are standard protocols that you may find useful for product applications.

- [Western Blot](#)
- [Blocking Peptides](#)
- [Dot Blot](#)
- [Immunohistochemistry](#)
- [Immunofluorescence](#)
- [Immunoprecipitation](#)
- [Flow Cytometry](#)
- [Cell Culture](#)

### CEBPG Antibody (C-term) - Images



CEBPG Antibody (C-term) (Cat. #AP10951b) western blot analysis in mouse lung tissue lysates (35ug/lane). This demonstrates the CEBPG antibody detected the CEBPG protein (arrow).

### CEBPG Antibody (C-term) - Background

The C/EBP family of transcription factors regulates viral and cellular CCAAT/enhancer element-mediated transcription. C/EBP proteins contain the bZIP region, which is characterized by two motifs in the C-terminal half of the protein: a basic region involved in DNA binding and a leucine zipper motif involved in dimerization. The C/EBP family consist of several related proteins, C/EBP alpha, C/EBP beta, C/EBP gamma, and C/EBP delta, that form homodimers and that form heterodimers with each other. CCAAT/enhancer binding protein gamma may cooperate with Fos to bind PRE-I enhancer elements.

### CEBPG Antibody (C-term) - References

Davila, S., et al. Genes Immun. 11(3):232-238(2010)

Crawford, E.L., et al. Carcinogenesis 28(12):2552-2559(2007)

Mullins, D.N., et al. BMC Cancer 5, 141 (2005) :

Newman, J.R., et al. Science 300(5628):2097-2101(2003)

Hattori, T., et al. Oncogene 22(9):1273-1280(2003)