

SMYD1 Antibody (C-term)
Affinity Purified Rabbit Polyclonal Antibody (Pab)
Catalog # AP10952b**Specification**

SMYD1 Antibody (C-term) - Product Information

Application	FC, WB,E
Primary Accession	Q8NB12
Other Accession	NP_938015.1
Reactivity	Human
Host	Rabbit
Clonality	Polyclonal
Isotype	Rabbit IgG
Calculated MW	56617
Antigen Region	420-449

SMYD1 Antibody (C-term) - Additional Information**Gene ID** 150572**Other Names**

Histone-lysine N-methyltransferase SMYD1, SET and MYND domain-containing protein 1, SMYD1

Target/Specificity

This SMYD1 antibody is generated from rabbits immunized with a KLH conjugated synthetic peptide between 420-449 amino acids from the C-terminal region of human SMYD1.

Dilution

FC~~1:10~50

WB~~1:1000

E~~Use at an assay dependent concentration.

Format

Purified polyclonal antibody supplied in PBS with 0.09% (W/V) sodium azide. This antibody is purified through a protein A column, followed by peptide affinity purification.

Storage

Maintain refrigerated at 2-8°C for up to 2 weeks. For long term storage store at -20°C in small aliquots to prevent freeze-thaw cycles.

Precautions

SMYD1 Antibody (C-term) is for research use only and not for use in diagnostic or therapeutic procedures.

SMYD1 Antibody (C-term) - Protein Information**Name** SMYD1

Function Methylates histone H3 at 'Lys-4' (H3K4me), seems able to perform both mono-, di-, and trimethylation. Acts as a transcriptional repressor. Essential for cardiomyocyte differentiation and cardiac morphogenesis.

Cellular Location

Cytoplasm. Nucleus.

Tissue Location

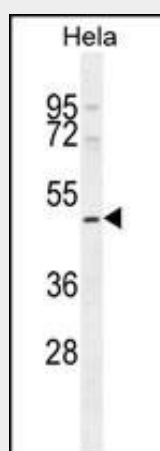
Expression seems mostly restricted to heart and skeletal muscle.

SMYD1 Antibody (C-term) - Protocols

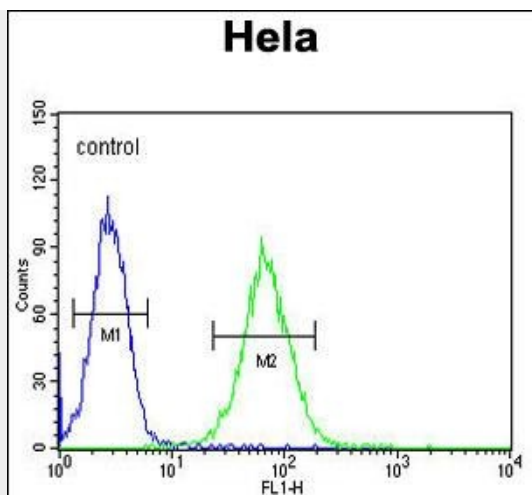
Provided below are standard protocols that you may find useful for product applications.

- [Western Blot](#)
- [Blocking Peptides](#)
- [Dot Blot](#)
- [Immunohistochemistry](#)
- [Immunofluorescence](#)
- [Immunoprecipitation](#)
- [Flow Cytometry](#)
- [Cell Culture](#)

SMYD1 Antibody (C-term) - Images



SMYD1 Antibody (C-term) (Cat. #AP10952b) western blot analysis in HeLa cell line lysates (35ug/lane). This demonstrates the SMYD1 antibody detected the SMYD1 protein (arrow).



SMYD1 Antibody (C-term) (Cat. #AP10952b) flow cytometric analysis of HeLa cells (right histogram) compared to a negative control cell (left histogram). FITC-conjugated goat-anti-rabbit secondary antibodies were used for the analysis.

SMYD1 Antibody (C-term) - Background

Acts as a transcriptional repressor. Essential for cardiomyocyte differentiation and cardiac morphogenesis (By similarity).

SMYD1 Antibody (C-term) - References

Rose, J.E., et al. Mol. Med. 16 (7-8), 247-253 (2010) :
 Yang, J., et al. J. Mol. Biol. 386(4):938-950(2009)
 Sims, R.J. III, et al. J. Biol. Chem. 277(29):26524-26529(2002)
 Gottlieb, P.D., et al. Nat. Genet. 31(1):25-32(2002)
 Srivastava, D., et al. Cold Spring Harb. Symp. Quant. Biol. 67, 121-125 (2002) :