

**IGHG1 Antibody (Center)**  
**Affinity Purified Rabbit Polyclonal Antibody (Pab)**  
**Catalog # AP10959c****Specification**

---

**IGHG1 Antibody (Center) - Product Information**

Application	WB, FC,E
Primary Accession	<a href="#">P01857</a>
Other Accession	<a href="#">P01860</a>
Reactivity	Human
Host	Rabbit
Clonality	Polyclonal
Isotype	Rabbit IgG
Antigen Region	154-180

**IGHG1 Antibody (Center) - Additional Information****Other Names**

Ig gamma-1 chain C region, IGHG1

**Target/Specificity**

This IGHG1 antibody is generated from rabbits immunized with a KLH conjugated synthetic peptide between 154-180 amino acids from the Central region of human IGHG1.

**Dilution**

WB~~1:2000

FC~~1:25

E~~Use at an assay dependent concentration.

**Format**

Purified polyclonal antibody supplied in PBS with 0.09% (W/V) sodium azide. This antibody is purified through a protein A column, followed by peptide affinity purification.

**Storage**

Maintain refrigerated at 2-8°C for up to 2 weeks. For long term storage store at -20°C in small aliquots to prevent freeze-thaw cycles.

**Precautions**

IGHG1 Antibody (Center) is for research use only and not for use in diagnostic or therapeutic procedures.

**IGHG1 Antibody (Center) - Protein Information**

**Name** IGHG1 {ECO:0000303|PubMed:11340299, ECO:0000303|Ref.13}

**Function** Constant region of immunoglobulin heavy chains. Immunoglobulins, also known as antibodies, are membrane-bound or secreted glycoproteins produced by B lymphocytes. In the recognition phase of humoral immunity, the membrane-bound immunoglobulins serve as

receptors which, upon binding of a specific antigen, trigger the clonal expansion and differentiation of B lymphocytes into immunoglobulins- secreting plasma cells. Secreted immunoglobulins mediate the effector phase of humoral immunity, which results in the elimination of bound antigens (PubMed:[20176268](#), PubMed:[22158414](#)). The antigen binding site is formed by the variable domain of one heavy chain, together with that of its associated light chain. Thus, each immunoglobulin has two antigen binding sites with remarkable affinity for a particular antigen. The variable domains are assembled by a process called V-(D)-J rearrangement and can then be subjected to somatic hypermutations which, after exposure to antigen and selection, allow affinity maturation for a particular antigen (PubMed:[17576170](#), PubMed:[20176268](#)). Mediates IgG effector functions on monocytes triggering ADCC of virus- infected cells.

#### Cellular Location

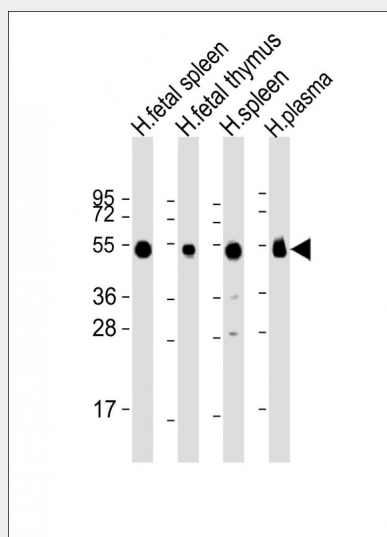
[Isoform 1]: Secreted

### IGHG1 Antibody (Center) - Protocols

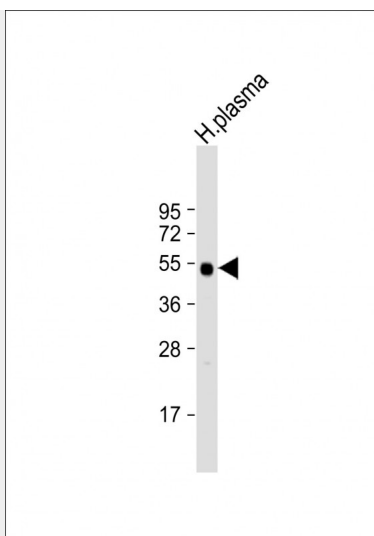
Provided below are standard protocols that you may find useful for product applications.

- [Western Blot](#)
- [Blocking Peptides](#)
- [Dot Blot](#)
- [Immunohistochemistry](#)
- [Immunofluorescence](#)
- [Immunoprecipitation](#)
- [Flow Cytometry](#)
- [Cell Culture](#)

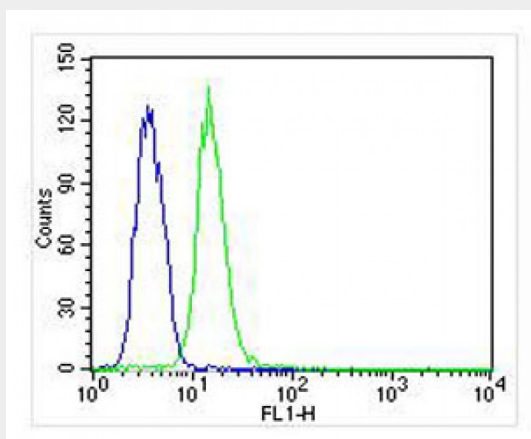
### IGHG1 Antibody (Center) - Images



All lanes : Anti-IGHG1 Antibody (Center) at 1:2000 dilution Lane 1: human fetal spleen lysate Lane 2: human fetal thymus lysate Lane 3: human spleen lysate Lane 4: human plasma lysate Lysates/proteins at 20 µg per lane. Secondary Goat Anti-Rabbit IgG, (H+L), Peroxidase conjugated at 1/10000 dilution. Predicted band size : 36 kDa Blocking/Dilution buffer: 5% NFDM/TBST.



Anti-IGHG1 Antibody (Center) at 1:2000 dilution + human plasma lysate Lysates/proteins at 20  $\mu$ g per lane. Secondary Goat Anti-Rabbit IgG, (H+L), Peroxidase conjugated at 1/10000 dilution. Predicted band size : 36 kDa Blocking/Dilution buffer: 5% NFDM/TBST.



Overlay histogram showing HL-60 cells stained with AP10959c (green line). The cells were fixed with 2% paraformaldehyde (10 min) and then permeabilized with 90% methanol for 10 min. The cells were then incubated in 2% bovine serum albumin to block non-specific protein-protein interactions followed by the antibody (AP10959c, 1:25 dilution) for 60 min at 37°C. The secondary antibody used was Goat-Anti-Rabbit IgG, DyLight® 488 Conjugated Highly Cross-Adsorbed(NA168821) at 1/400 dilution for 40 min at 37°C. Isotype control antibody (blue line) was rabbit IgG (1 $\mu$ g/1x10<sup>6</sup> cells) used under the same conditions. Acquisition of >10,000 events was performed.