

ITIH5 Antibody (C-term)
Affinity Purified Rabbit Polyclonal Antibody (Pab)
Catalog # AP10965b**Specification**

ITIH5 Antibody (C-term) - Product Information

Application	IHC-P, WB,E
Primary Accession	Q86UX2
Other Accession	NP_085046.4 , NP_116206.3 , NP_001001851.1
Reactivity	Human
Host	Rabbit
Clonality	Polyclonal
Isotype	Rabbit IgG
Calculated MW	104576
Antigen Region	578-606

ITIH5 Antibody (C-term) - Additional Information**Gene ID** 80760**Other Names**

Inter-alpha-trypsin inhibitor heavy chain H5, ITI heavy chain H5, ITI-HC5, Inter-alpha-inhibitor heavy chain 5, ITIH5, KIAA1953

Target/Specificity

This ITIH5 antibody is generated from rabbits immunized with a KLH conjugated synthetic peptide between 578-606 amino acids from the C-terminal region of human ITIH5.

Dilution

IHC-P~~1:50~100

WB~~1:1000

E~~Use at an assay dependent concentration.

Format

Purified polyclonal antibody supplied in PBS with 0.09% (W/V) sodium azide. This antibody is purified through a protein A column, followed by peptide affinity purification.

Storage

Maintain refrigerated at 2-8°C for up to 2 weeks. For long term storage store at -20°C in small aliquots to prevent freeze-thaw cycles.

Precautions

ITIH5 Antibody (C-term) is for research use only and not for use in diagnostic or therapeutic procedures.

ITIH5 Antibody (C-term) - Protein Information**Name** ITIH5

Synonyms KIAA1953

Function May act as a tumor suppressor.

Cellular Location
Secreted.

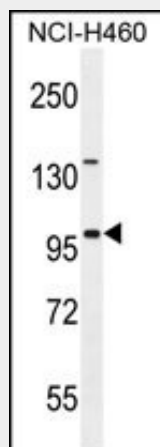
Tissue Location
Abundantly expressed in placenta. Less abundant expression in mammary gland and ovary. Expression is barely detectable levels in all other tissues tested.

ITIH5 Antibody (C-term) - Protocols

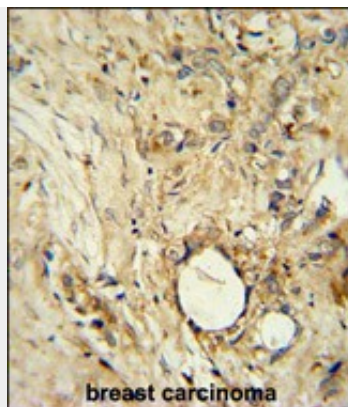
Provided below are standard protocols that you may find useful for product applications.

- [Western Blot](#)
- [Blocking Peptides](#)
- [Dot Blot](#)
- [Immunohistochemistry](#)
- [Immunofluorescence](#)
- [Immunoprecipitation](#)
- [Flow Cytometry](#)
- [Cell Culture](#)

ITIH5 Antibody (C-term) - Images



ITIH5 Antibody (C-term) (Cat. #AP10965b) western blot analysis in NCI-H460 cell line lysates (35ug/lane). This demonstrates the ITIH5 antibody detected the ITIH5 protein (arrow).



ITIH5 Antibody (C-term) (Cat. #AP10965b) immunohistochemistry analysis in formalin fixed and paraffin embedded human breast carcinoma followed by peroxidase conjugation of the secondary antibody and DAB staining. This data demonstrates the use of the ITIH5 Antibody (C-term) for immunohistochemistry. Clinical relevance has not been evaluated.

ITIH5 Antibody (C-term) - Background

This gene encodes a heavy chain component of one of the inter-alpha-trypsin inhibitor (ITI) family members. ITI proteins are involved in extracellular matrix stabilization and in the prevention of tumor metastasis. They are also structurally related plasma serine protease inhibitors and are composed of a light chain and varying numbers of heavy chains. This family member is thought to function as a tumor suppressor in breast and thyroid cancers. Alternative splicing results in multiple transcript variants.

ITIH5 Antibody (C-term) - References

Pita, J.M., et al. Br. J. Cancer 101(10):1782-1791(2009)
Veeck, J., et al. Pathologie 29 SUPPL 2, 338-346 (2008) :
Veeck, J., et al. Oncogene 27(6):865-876(2008)
Hamm, A., et al. BMC Cancer 8, 25 (2008) :
Grupe, A., et al. Am. J. Hum. Genet. 78(1):78-88(2006)