

BCL11B Antibody (Center)
Affinity Purified Rabbit Polyclonal Antibody (Pab)
Catalog # AP10966c**Specification**

BCL11B Antibody (Center) - Product Information

Application	WB,E
Primary Accession	O9C0K0
Other Accession	O99PV8 , NP_612808.1 , NP_075049.1
Reactivity	Human
Predicted	Mouse
Host	Rabbit
Clonality	Polyclonal
Isotype	Rabbit IgG
Calculated MW	95519
Antigen Region	307-334

BCL11B Antibody (Center) - Additional Information**Gene ID** 64919**Other Names**

B-cell lymphoma/leukemia 11B, BCL-11B, B-cell CLL/lymphoma 11B, COUP-TF-interacting protein 2, Radiation-induced tumor suppressor gene 1 protein, hRit1, BCL11B, CTIP2, RIT1

Target/Specificity

This BCL11B antibody is generated from rabbits immunized with a KLH conjugated synthetic peptide between 307-334 amino acids from the Central region of human BCL11B.

Dilution

WB~~1:16000

E~~Use at an assay dependent concentration.

Format

Purified polyclonal antibody supplied in PBS with 0.09% (W/V) sodium azide. This antibody is purified through a protein A column, followed by peptide affinity purification.

Storage

Maintain refrigerated at 2-8°C for up to 2 weeks. For long term storage store at -20°C in small aliquots to prevent freeze-thaw cycles.

Precautions

BCL11B Antibody (Center) is for research use only and not for use in diagnostic or therapeutic procedures.

BCL11B Antibody (Center) - Protein Information**Name** BCL11B

Synonyms CTIP2, RIT1

Function Key regulator of both differentiation and survival of T- lymphocytes during thymocyte development in mammals. Essential in controlling the responsiveness of hematopoietic stem cells to chemotactic signals by modulating the expression of the receptors CCR7 and CCR9, which direct the movement of progenitor cells from the bone marrow to the thymus (PubMed:[27959755](#)). Is a regulator of IL2 promoter and enhances IL2 expression in activated CD4(+) T-lymphocytes (PubMed:[16809611](#)). Tumor-suppressor that represses transcription through direct, TFCOUP2-independent binding to a GC-rich response element (By similarity). May also function in the P53-signaling pathway (By similarity).

Cellular Location

Nucleus.

Tissue Location

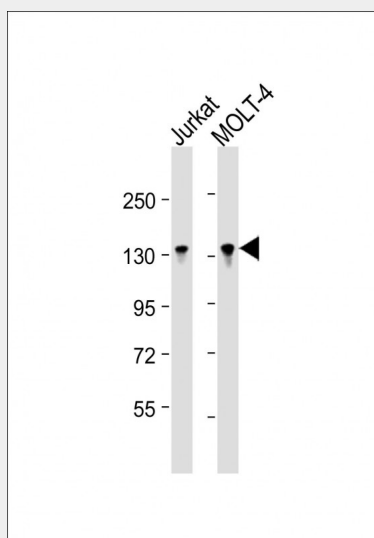
Highly expressed in brain and in malignant T-cell lines derived from patients with adult T-cell leukemia/lymphoma

BCL11B Antibody (Center) - Protocols

Provided below are standard protocols that you may find useful for product applications.

- [Western Blot](#)
- [Blocking Peptides](#)
- [Dot Blot](#)
- [Immunohistochemistry](#)
- [Immunofluorescence](#)
- [Immunoprecipitation](#)
- [Flow Cytometry](#)
- [Cell Culture](#)

BCL11B Antibody (Center) - Images



All lanes : Anti-BCL11B Antibody (Center) at 1:16000 dilution Lane 1: Jurkat whole cell lysate Lane 2: MOLT-4 whole cell lysate Lysates/proteins at 20 µg per lane. Secondary Goat Anti-Rabbit IgG, (H+L), Peroxidase conjugated at 1/10000 dilution. Predicted band size : 96 kDa Blocking/Dilution buffer: 5% NFDM/TBST.

BCL11B Antibody (Center) - Background

This gene encodes a C2H2-type zinc finger protein and is closely related to BCL11A, a gene whose translocation may be associated with B-cell malignancies. The specific function of this gene has not yet been determined. Two alternatively spliced transcript variants, which encode distinct isoforms, have been reported.

BCL11B Antibody (Center) - References

Ganguli-Indra, G., et al. Exp. Dermatol. 18(11):994-996(2009)
Cherrier, T., et al. Oncogene 28(38):3380-3389(2009)
Ganguli-Indra, G., et al. PLoS ONE 4 (4), E5367 (2009) :
Cismasiu, V.B., et al. Virology 380(2):173-181(2008)
Desplats, P.A., et al. Neurobiol. Dis. 31(3):298-308(2008)