

MAN2A1 Antibody (Center)
Affinity Purified Rabbit Polyclonal Antibody (Pab)
Catalog # AP10967c**Specification**

MAN2A1 Antibody (Center) - Product Information

Application	WB, FC,E
Primary Accession	Q16706
Other Accession	NP_002363.2
Reactivity	Human
Host	Rabbit
Clonality	Polyclonal
Isotype	Rabbit IgG
Calculated MW	131141
Antigen Region	456-482

MAN2A1 Antibody (Center) - Additional Information**Gene ID** 4124**Other Names**

Alpha-mannosidase 2, Golgi alpha-mannosidase II, AMan II, Man II, Mannosidase alpha class 2A member 1, Mannosyl-oligosaccharide 1, 3-1, 6-alpha-mannosidase, MAN2A1, MANA2

Target/Specificity

This MAN2A1 antibody is generated from rabbits immunized with a KLH conjugated synthetic peptide between 456-482 amino acids from the Central region of human MAN2A1.

Dilution

WB~~1:1000

FC~~1:10~50

E~~Use at an assay dependent concentration.

Format

Purified polyclonal antibody supplied in PBS with 0.09% (W/V) sodium azide. This antibody is purified through a protein A column, followed by peptide affinity purification.

Storage

Maintain refrigerated at 2-8°C for up to 2 weeks. For long term storage store at -20°C in small aliquots to prevent freeze-thaw cycles.

Precautions

MAN2A1 Antibody (Center) is for research use only and not for use in diagnostic or therapeutic procedures.

MAN2A1 Antibody (Center) - Protein Information**Name** MAN2A1

Synonyms MANA2

Function Catalyzes the first committed step in the biosynthesis of complex N-glycans. It controls conversion of high mannose to complex N- glycans; the final hydrolytic step in the N-glycan maturation pathway.

Cellular Location

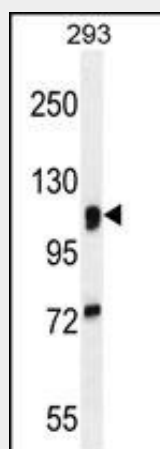
Golgi apparatus membrane {ECO:0000250|UniProtKB:P28494}; Single-pass type II membrane protein {ECO:0000250|UniProtKB:P28494}

MAN2A1 Antibody (Center) - Protocols

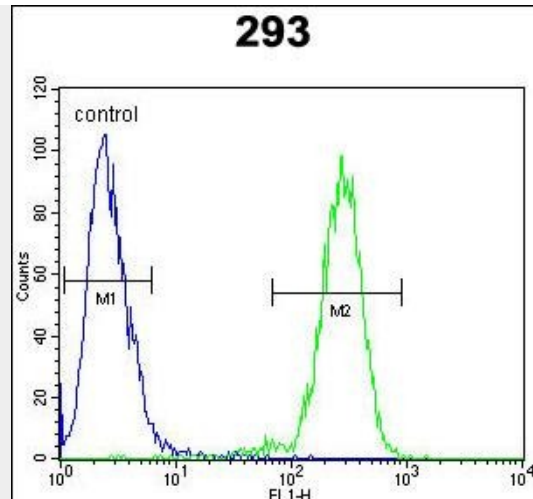
Provided below are standard protocols that you may find useful for product applications.

- [Western Blot](#)
- [Blocking Peptides](#)
- [Dot Blot](#)
- [Immunohistochemistry](#)
- [Immunofluorescence](#)
- [Immunoprecipitation](#)
- [Flow Cytometry](#)
- [Cell Culture](#)

MAN2A1 Antibody (Center) - Images



MAN2A1 Antibody (Center) (Cat. #AP10967c) western blot analysis in 293 cell line lysates (35ug/lane). This demonstrates the MAN2A1 antibody detected the MAN2A1 protein (arrow).



MAN2A1 Antibody (Center) (Cat. #AP10967c) flow cytometric analysis of 293 cells (right histogram) compared to a negative control cell (left histogram). FITC-conjugated goat-anti-rabbit secondary antibodies were used for the analysis.

MAN2A1 Antibody (Center) - Background

This gene encodes a protein which is a member of family 38 of the glycosyl hydrolases. The protein is located in the Golgi and catalyzes the final hydrolytic step in the asparagine-linked oligosaccharide (N-glycan) maturation pathway. Mutations in the mouse homolog of this gene have been shown to cause a systemic autoimmune disease similar to human systemic lupus erythematosus.

MAN2A1 Antibody (Center) - References

Han, S., et al. Leuk. Res. 34(10):1271-1274(2010)
Rose, J.E., et al. Mol. Med. 16 (7-8), 247-253 (2010) :
Zhou, J.B., et al. Med. Sci. Monit. 16 (6), BR179-BR183 (2010) :
Miyagawa, H., et al. Rheumatology (Oxford) 47(2):158-164(2008)
Yang, Q., et al. BMC Med. Genet. 8 SUPPL 1, S12 (2007) :