

ANAPC5 Antibody (Center)
Affinity Purified Rabbit Polyclonal Antibody (Pab)
Catalog # AP10974c**Specification**

ANAPC5 Antibody (Center) - Product Information

Application	WB, FC,E
Primary Accession	O9UJX4
Other Accession	NP_057321.2
Reactivity	Human
Host	Rabbit
Clonality	Polyclonal
Isotype	Rabbit IgG
Calculated MW	85077
Antigen Region	156-185

ANAPC5 Antibody (Center) - Additional Information**Gene ID** 51433**Other Names**

Anaphase-promoting complex subunit 5, APC5, Cyclosome subunit 5, ANAPC5, APC5

Target/Specificity

This ANAPC5 antibody is generated from rabbits immunized with a KLH conjugated synthetic peptide between 156-185 amino acids from the Central region of human ANAPC5.

Dilution

WB~~1:1000

FC~~1:10~50

Format

Purified polyclonal antibody supplied in PBS with 0.09% (W/V) sodium azide. This antibody is purified through a protein A column, followed by peptide affinity purification.

Storage

Maintain refrigerated at 2-8°C for up to 2 weeks. For long term storage store at -20°C in small aliquots to prevent freeze-thaw cycles.

Precautions

ANAPC5 Antibody (Center) is for research use only and not for use in diagnostic or therapeutic procedures.

ANAPC5 Antibody (Center) - Protein Information**Name** ANAPC5**Synonyms** APC5

Function Component of the anaphase promoting complex/cyclosome (APC/C), a cell cycle-regulated E3 ubiquitin ligase that controls progression through mitosis and the G1 phase of the cell cycle. The APC/C complex acts by mediating ubiquitination and subsequent degradation of target proteins: it mainly mediates the formation of 'Lys-11'-linked polyubiquitin chains and, to a lower extent, the formation of 'Lys-48'- and 'Lys-63'-linked polyubiquitin chains.

Cellular Location

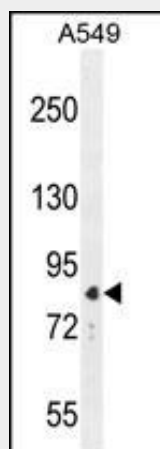
Nucleus. Cytoplasm, cytoskeleton, spindle

ANAPC5 Antibody (Center) - Protocols

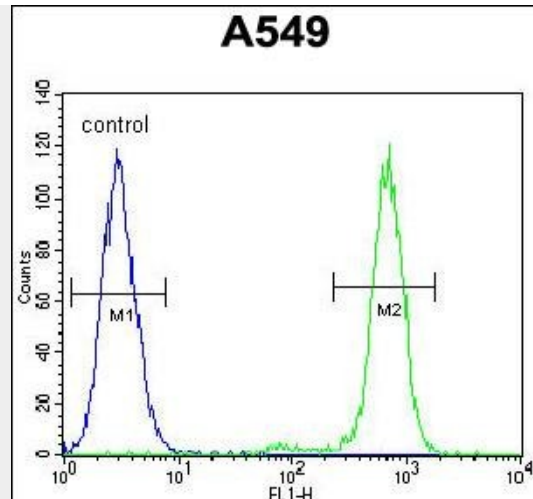
Provided below are standard protocols that you may find useful for product applications.

- [Western Blot](#)
- [Blocking Peptides](#)
- [Dot Blot](#)
- [Immunohistochemistry](#)
- [Immunofluorescence](#)
- [Immunoprecipitation](#)
- [Flow Cytometry](#)
- [Cell Culture](#)

ANAPC5 Antibody (Center) - Images



ANAPC5 Antibody (Center) (Cat. #AP10974c) western blot analysis in A549 cell line lysates (35ug/lane). This demonstrates the ANAPC5 antibody detected the ANAPC5 protein (arrow).



ANAPC5 Antibody (Center) (Cat. #AP10974c) flow cytometric analysis of A549 cells (right histogram) compared to a negative control cell (left histogram). FITC-conjugated goat-anti-rabbit secondary antibodies were used for the analysis.

ANAPC5 Antibody (Center) - Background

This gene encodes a tetratricopeptide repeat-containing component of the anaphase promoting complex/cyclosome (APC/C), a large E3 ubiquitin ligase that controls cell cycle progression by targeting a number of cell cycle regulators such as B-type cyclins for 26S proteasome-mediated degradation through ubiquitination. The encoded protein is required for the proper ubiquitination function of APC/C and for the interaction of APC/C with transcription coactivators. It also interacts with polyA binding protein and represses internal ribosome entry site-mediated translation. Multiple transcript variants encoding different isoforms have been found for this gene. These differences cause translation initiation at a downstream AUG and result in a shorter protein (isoform b), compared to isoform a.

ANAPC5 Antibody (Center) - References

Wasch, R., et al. *Oncogene* 29(1):1-10(2010)
Jin, L., et al. *Cell* 133(4):653-665(2008)
Liu, J., et al. *Cancer Biol. Ther.* 5(7):760-762(2006)
Dube, P., et al. *Mol. Cell* 20(6):867-879(2005)
Turnell, A.S., et al. *Nature* 438(7068):690-695(2005)