

CT117 Antibody (N-term)
Affinity Purified Rabbit Polyclonal Antibody (Pab)
Catalog # AP10979A**Specification**

CT117 Antibody (N-term) - Product Information

Application	WB,E
Primary Accession	O94964
Other Accession	NP_542194.2
Reactivity	Human
Host	Rabbit
Clonality	Polyclonal
Isotype	Rabbit IgG
Calculated MW	183858
Antigen Region	97-125

CT117 Antibody (N-term) - Additional Information**Gene ID** 140710**Other Names**

Protein SOGA1, SOGA family member 1, Suppressor of glucose by autophagy, Suppressor of glucose, autophagy-associated protein 1, N-terminal form, C-terminal 80 kDa form, 80-kDa SOGA fragment, SOGA1, C20orf117, KIAA0889, SOGA

Target/Specificity

This CT117 antibody is generated from rabbits immunized with a KLH conjugated synthetic peptide between 97-125 amino acids from the N-terminal region of human CT117.

Dilution

WB~~1:1000

Format

Purified polyclonal antibody supplied in PBS with 0.09% (W/V) sodium azide. This antibody is purified through a protein A column, followed by peptide affinity purification.

Storage

Maintain refrigerated at 2-8°C for up to 2 weeks. For long term storage store at -20°C in small aliquots to prevent freeze-thaw cycles.

Precautions

CT117 Antibody (N-term) is for research use only and not for use in diagnostic or therapeutic procedures.

CT117 Antibody (N-term) - Protein Information**Name** MTCL2 ([HGNC:16111](#))

Function Microtubule-associated factor that enables integration of the centrosomal and Golgi-associated microtubules on the Golgi membrane, supporting directional migration. Preferentially acts on the perinuclear microtubules accumulated around the Golgi. Associates with the Golgi membrane through the N-terminal coiled-coil region and directly binds microtubules through the C-terminal domain (By similarity). Required for faithful chromosome segregation during mitosis (PubMed:[33587225](#)). Regulates autophagy by playing a role in the reduction of glucose production in an adiponectin- and insulin- dependent manner (By similarity).

Cellular Location

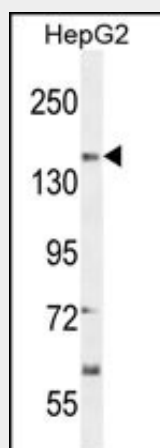
Cytoplasm, cytoskeleton. Golgi apparatus membrane {ECO:0000250|UniProtKB:E1U8D0}. Midbody Note=Associates with microtubules during late mitosis and interphase

CT117 Antibody (N-term) - Protocols

Provided below are standard protocols that you may find useful for product applications.

- [Western Blot](#)
- [Blocking Peptides](#)
- [Dot Blot](#)
- [Immunohistochemistry](#)
- [Immunofluorescence](#)
- [Immunoprecipitation](#)
- [Flow Cytometry](#)
- [Cell Culture](#)

CT117 Antibody (N-term) - Images



CT117 Antibody (N-term) (Cat. #AP10979a) western blot analysis in HepG2 cell line lysates (35ug/lane). This demonstrates the CT117 antibody detected the CT117 protein (arrow).

CT117 Antibody (N-term) - References

Brajenovic, M., et al. J. Biol. Chem. 279(13):12804-12811(2004)