

BCLAF1 Antibody (C-term)
Affinity Purified Rabbit Polyclonal Antibody (Pab)
Catalog # AP10988b**Specification**

BCLAF1 Antibody (C-term) - Product Information

Application	WB, IHC-P,E
Primary Accession	Q9NYF8
Other Accession	NP_055554.1 , NP_001070908.1 , NP_001070909.1
Reactivity	Human
Host	Rabbit
Clonality	Polyclonal
Isotype	Rabbit IgG
Calculated MW	106122
Antigen Region	658-687

BCLAF1 Antibody (C-term) - Additional Information**Gene ID** 9774**Other Names**

Bcl-2-associated transcription factor 1, Btf, BCLAF1, BTF, KIAA0164

Target/Specificity

This BCLAF1 antibody is generated from rabbits immunized with a KLH conjugated synthetic peptide between 658-687 amino acids from the C-terminal region of human BCLAF1.

Dilution

WB~~1:1000

IHC-P~~1:50~100

E~~Use at an assay dependent concentration.

Format

Purified polyclonal antibody supplied in PBS with 0.09% (W/V) sodium azide. This antibody is purified through a protein A column, followed by peptide affinity purification.

Storage

Maintain refrigerated at 2-8°C for up to 2 weeks. For long term storage store at -20°C in small aliquots to prevent freeze-thaw cycles.

Precautions

BCLAF1 Antibody (C-term) is for research use only and not for use in diagnostic or therapeutic procedures.

BCLAF1 Antibody (C-term) - Protein Information**Name** BCLAF1

Synonyms BTF, KIAA0164

Function Death-promoting transcriptional repressor. May be involved in cyclin-D1/CCND1 mRNA stability through the SNARP complex which associates with both the 3'end of the CCND1 gene and its mRNA.

Cellular Location

Cytoplasm. Nucleus. Nucleus speckle. Nucleus, nucleoplasm

Tissue Location

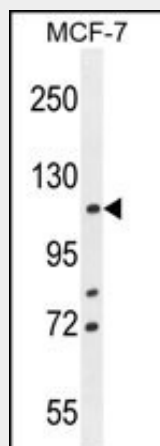
Ubiquitous.

BCLAF1 Antibody (C-term) - Protocols

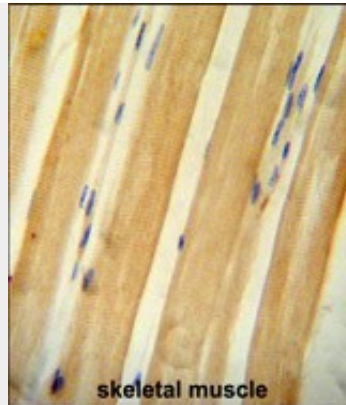
Provided below are standard protocols that you may find useful for product applications.

- [Western Blot](#)
- [Blocking Peptides](#)
- [Dot Blot](#)
- [Immunohistochemistry](#)
- [Immunofluorescence](#)
- [Immunoprecipitation](#)
- [Flow Cytometry](#)
- [Cell Culture](#)

BCLAF1 Antibody (C-term) - Images



BCLAF1 Antibody (C-term) (Cat. #AP10988b) western blot analysis in MCF-7 cell line lysates (35ug/lane). This demonstrates the BCLAF1 antibody detected the BCLAF1 protein (arrow).



BCLAF1 antibody (C-term) (Cat. #AP10988b) immunohistochemistry analysis in formalin fixed and paraffin embedded human skeletal muscle followed by peroxidase conjugation of the secondary antibody and DAB staining. This data demonstrates the use of the BCLAF1 antibody (C-term) for immunohistochemistry. Clinical relevance has not been evaluated.

BCLAF1 Antibody (C-term) - Background

This gene encodes a transcriptional repressor that interacts with several members of the BCL2 family of proteins. Overexpression of this protein induces apoptosis, which can be suppressed by co-expression of BCL2 proteins. The protein localizes to dot-like structures throughout the nucleus, and redistributes to a zone near the nuclear envelope in cells undergoing apoptosis. Multiple transcript variants encoding different isoforms have been found for this gene.

BCLAF1 Antibody (C-term) - References

Sarras, H., et al. ScientificWorldJournal 10, 1450-1461 (2010) :
Renert, A.F., et al. J. Proteome Res. 8(10):4810-4822(2009)
Liu, H., et al. Mol. Cell. Biol. 27(24):8480-8491(2007)
Sugiyama, N., et al. Mol. Cell Proteomics 6(6):1103-1109(2007)
Olsen, J.V., et al. Cell 127(3):635-648(2006)