

TBC14 Antibody (Center)
Affinity Purified Rabbit Polyclonal Antibody (Pab)
Catalog # AP10993c**Specification**

TBC14 Antibody (Center) - Product Information

Application	WB, IHC-P,E
Primary Accession	O9P2M4
Other Accession	NP_001106834.1 , NP_001106832.1 , NP_065824.2
Reactivity	Human, Mouse
Host	Rabbit
Clonality	Polyclonal
Isotype	Rabbit IgG
Calculated MW	78137
Antigen Region	259-286

TBC14 Antibody (Center) - Additional Information**Gene ID** 57533**Other Names**

TBC1 domain family member 14, TBC1D14, KIAA1322

Target/Specificity

This TBC14 antibody is generated from rabbits immunized with a KLH conjugated synthetic peptide between 259-286 amino acids from the Central region of human TBC14.

DilutionWB~~1:1000
IHC-P~~1:50~100**Format**

Purified polyclonal antibody supplied in PBS with 0.09% (W/V) sodium azide. This antibody is purified through a protein A column, followed by peptide affinity purification.

Storage

Maintain refrigerated at 2-8°C for up to 2 weeks. For long term storage store at -20°C in small aliquots to prevent freeze-thaw cycles.

Precautions

TBC14 Antibody (Center) is for research use only and not for use in diagnostic or therapeutic procedures.

TBC14 Antibody (Center) - Protein Information**Name** TBC1D14

Synonyms KIAA1322

Function Plays a role in the regulation of starvation-induced autophagosome formation (PubMed:[22613832](#)). Together with the TRAPPIII complex, regulates a constitutive trafficking step from peripheral recycling endosomes to the early Golgi, maintaining the cycling pool of ATG9 required for initiation of autophagy.

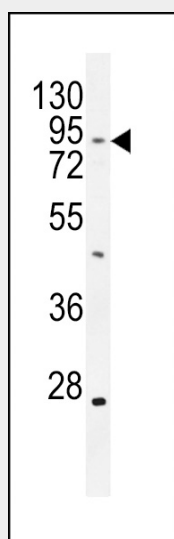
Cellular Location

Golgi apparatus, cis-Golgi network. Golgi apparatus, trans-Golgi network Note=After amino acid starvation, Golgi apparatus-associated protein levels increase compared with fed conditions. May be cycling between the Golgi apparatus and an endosomal pool, redistributing to the Golgi apparatus upon starvation

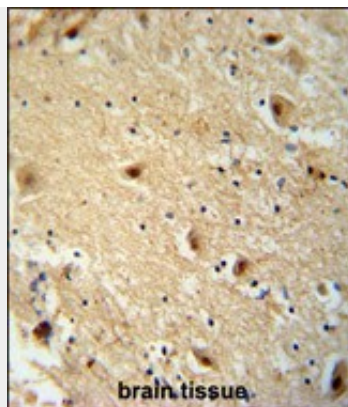
TBC14 Antibody (Center) - Protocols

Provided below are standard protocols that you may find useful for product applications.

- [Western Blot](#)
- [Blocking Peptides](#)
- [Dot Blot](#)
- [Immunohistochemistry](#)
- [Immunofluorescence](#)
- [Immunoprecipitation](#)
- [Flow Cytometry](#)
- [Cell Culture](#)

TBC14 Antibody (Center) - Images

TBC14 Antibody (Center) (Cat. #AP10993c) western blot analysis in mouse heart tissue lysates (35ug/lane). This demonstrates the TBC14 antibody detected the TBC14 protein (arrow).



TBC14 antibody (Center) (Cat. #AP10993c) immunohistochemistry analysis in formalin fixed and paraffin embedded human brain tissue followed by peroxidase conjugation of the secondary antibody and DAB staining. This data demonstrates the use of the TBC14 antibody (Center) for immunohistochemistry. Clinical relevance has not been evaluated.

TBC14 Antibody (Center) - Background

May act as a GTPase-activating protein for Rab family protein(s) (By similarity).

TBC14 Antibody (Center) - References

Rose, J.E., et al. Mol. Med. 16 (7-8), 247-253 (2010) :
Ishibashi, K., et al. Genes Cells 14(1):41-52(2009)
Tempel, W., et al. Proteins 71(1):497-502(2008)