

**NUSAP Antibody (N-term)**  
**Affinity Purified Rabbit Polyclonal Antibody (Pab)**  
**Catalog # AP11000a****Specification**

---

**NUSAP Antibody (N-term) - Product Information**

Application	IHC-P, WB,E
Primary Accession	<a href="#">Q9BXS6</a>
Other Accession	<a href="#">NP_057443.2</a> , <a href="#">NP_001123369.1</a> , <a href="#">NP_060924.4</a>
Reactivity	Human
Host	Rabbit
Clonality	Polyclonal
Isotype	Rabbit IgG
Calculated MW	49452
Antigen Region	27-56

**NUSAP Antibody (N-term) - Additional Information****Gene ID** 51203**Other Names**

Nucleolar and spindle-associated protein 1, NuSAP, NUSAP1, ANKT

**Target/Specificity**

This NUSAP antibody is generated from rabbits immunized with a KLH conjugated synthetic peptide between 27-56 amino acids from the N-terminal region of human NUSAP.

**Dilution**

IHC-P~~1:50~100

WB~~1:1000

E~~Use at an assay dependent concentration.

**Format**

Purified polyclonal antibody supplied in PBS with 0.09% (W/V) sodium azide. This antibody is purified through a protein A column, followed by peptide affinity purification.

**Storage**

Maintain refrigerated at 2-8°C for up to 2 weeks. For long term storage store at -20°C in small aliquots to prevent freeze-thaw cycles.

**Precautions**

NUSAP Antibody (N-term) is for research use only and not for use in diagnostic or therapeutic procedures.

**NUSAP Antibody (N-term) - Protein Information****Name** NUSAP1

### Synonyms ANKT

**Function** Microtubule-associated protein with the capacity to bundle and stabilize microtubules (By similarity). May associate with chromosomes and promote the organization of mitotic spindle microtubules around them.

### Cellular Location

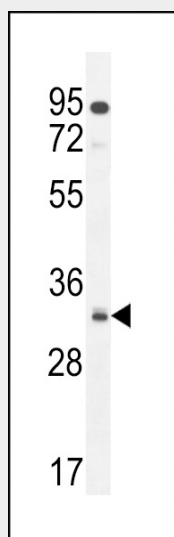
Cytoplasm. Nucleus, nucleolus. Cytoplasm, cytoskeleton, spindle Chromosome. Note=Found in the cytoplasm and nucleolus during interphase and redistributes to the mitotic spindle in prometaphase (By similarity). Localizes to the mitotic spindle during anaphase and telophase then disappears from around the chromosomes during cytokinesis (By similarity). Localizes to multiple distinct regions of chromosomes throughout mitosis. {ECO:0000250, ECO:0000269|PubMed:17276916, ECO:0000269|PubMed:17618083}

### NUSAP Antibody (N-term) - Protocols

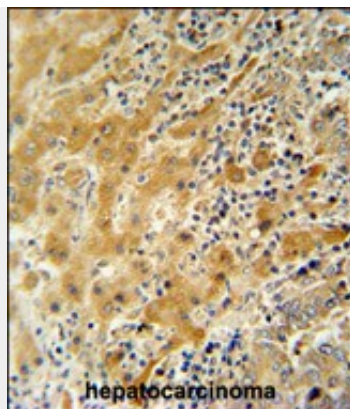
Provided below are standard protocols that you may find useful for product applications.

- [Western Blot](#)
- [Blocking Peptides](#)
- [Dot Blot](#)
- [Immunohistochemistry](#)
- [Immunofluorescence](#)
- [Immunoprecipitation](#)
- [Flow Cytometry](#)
- [Cell Culture](#)

### NUSAP Antibody (N-term) - Images



NUSAP Antibody (N-term) (Cat. #AP11000a) western blot analysis in U251 cell line lysates (35ug/lane). This demonstrates the NUSAP antibody detected the NUSAP protein (arrow).



NUSAP antibody (N-term) (Cat. #AP11000a) immunohistochemistry analysis in formalin fixed and paraffin embedded human hepatocarcinoma followed by peroxidase conjugation of the secondary antibody and DAB staining. This data demonstrates the use of the NUSAP antibody (N-term) for immunohistochemistry. Clinical relevance has not been evaluated.

#### **NUSAP Antibody (N-term) - Background**

NUSAP1 is a nucleolar-spindle-associated protein that plays a role in spindle microtubule organization (Raemaekers et al., 2003 [PubMed 12963707]).

#### **NUSAP Antibody (N-term) - References**

Wadia, P.P., et al. Blood 115(10):2077-2087(2010)  
Matsuoka, S., et al. Science 316(5828):1160-1166(2007)  
Nousiainen, M., et al. Proc. Natl. Acad. Sci. U.S.A. 103(14):5391-5396(2006)  
Raemaekers, T., et al. J. Cell Biol. 162(6):1017-1029(2003)