

**PPM1L Antibody (C-term)**  
**Affinity Purified Rabbit Polyclonal Antibody (Pab)**  
**Catalog # AP11001b**

**Specification**

---

**PPM1L Antibody (C-term) - Product Information**

Application	IHC-P, WB,E
Primary Accession	<a href="#">Q5SGD2</a>
Other Accession	<a href="#">Q8BHN0</a> , <a href="#">A5PJZ2</a> , <a href="#">NP_640338.2</a>
Reactivity	Human, Mouse
Predicted	Bovine
Host	Rabbit
Clonality	Polyclonal
Isotype	Rabbit IgG
Calculated MW	41053
Antigen Region	215-244

**PPM1L Antibody (C-term) - Additional Information**

**Gene ID** 151742

**Other Names**

Protein phosphatase 1L, Protein phosphatase 1-like, Protein phosphatase 2C isoform epsilon, PP2C-epsilon, PPM1L, PP2CE

**Target/Specificity**

This PPM1L antibody is generated from rabbits immunized with a KLH conjugated synthetic peptide between 215-244 amino acids from the C-terminal region of human PPM1L.

**Dilution**

IHC-P~~1:50~100

WB~~1:1000

E~~Use at an assay dependent concentration.

**Format**

Purified polyclonal antibody supplied in PBS with 0.09% (W/V) sodium azide. This antibody is purified through a protein A column, followed by peptide affinity purification.

**Storage**

Maintain refrigerated at 2-8°C for up to 2 weeks. For long term storage store at -20°C in small aliquots to prevent freeze-thaw cycles.

**Precautions**

PPM1L Antibody (C-term) is for research use only and not for use in diagnostic or therapeutic procedures.

**PPM1L Antibody (C-term) - Protein Information**

**Name** PPM1L

**Synonyms** PP2CE

**Function** Acts as a suppressor of the SAPK signaling pathways by associating with and dephosphorylating MAP3K7/TAK1 and MAP3K5, and by attenuating the association between MAP3K7/TAK1 and MAP2K4 or MAP2K6.

**Cellular Location**

Membrane; Single-pass type I membrane protein

**Tissue Location**

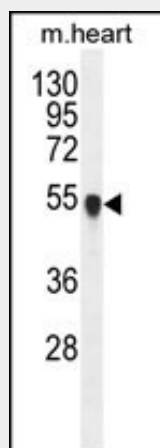
Ubiquitous. Highly expressed in heart, placenta, lung, liver, kidney and pancreas.

**PPM1L Antibody (C-term) - Protocols**

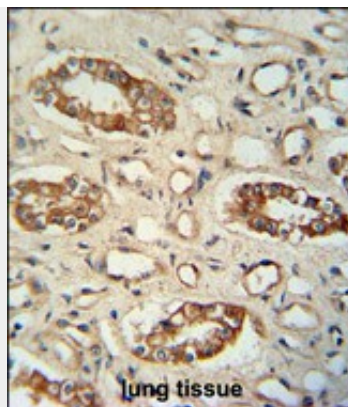
Provided below are standard protocols that you may find useful for product applications.

- [Western Blot](#)
- [Blocking Peptides](#)
- [Dot Blot](#)
- [Immunohistochemistry](#)
- [Immunofluorescence](#)
- [Immunoprecipitation](#)
- [Flow Cytometry](#)
- [Cell Culture](#)

**PPM1L Antibody (C-term) - Images**



PPM1L Antibody (C-term) (Cat. #AP11001b) western blot analysis in mouse heart tissue lysates (35ug/lane). This demonstrates the PPM1L antibody detected the PPM1L protein (arrow).



PPM1L antibody (C-term) (Cat. #AP11001b) immunohistochemistry analysis in formalin fixed and paraffin embedded human lung tissue followed by peroxidase conjugation of the secondary antibody and DAB staining. This data demonstrates the use of the PPM1L antibody (C-term) for immunohistochemistry. Clinical relevance has not been evaluated.

#### **PPM1L Antibody (C-term) - Background**

PPM1L, or PP2CE, belongs to the PP2C group of serine/threonine phosphatases, which are distinguished from other phosphatases by their structure, absolute requirement for  $Mg(2+)$  or  $Mn(2+)$ , and insensitivity to okadaic acid. PP2Cs regulate stress-activated protein kinase (SAPK; see MIM 601158) signaling cascades that respond to extracellular stimuli (Jin et al., 2004 [PubMed 15560375]).

#### **PPM1L Antibody (C-term) - References**

Rose, J.E., et al. Mol. Med. 16 (7-8), 247-253 (2010) :  
Thean, L.F., et al. Genes Chromosomes Cancer 49(2):99-106(2010)  
Trynka, G., et al. Gut 58(8):1078-1083(2009)  
Saito, S., et al. J. Biol. Chem. 283(10):6584-6593(2008)  
Saito, J., et al. Biochem. J. 405(3):591-596(2007)