

**TM168 Antibody (C-term)**  
**Affinity Purified Rabbit Polyclonal Antibody (Pab)**  
**Catalog # AP11002B****Specification**

---

**TM168 Antibody (C-term) - Product Information**

Application	WB, FC,E
Primary Accession	<a href="#">Q9H0V1</a>
Other Accession	<a href="#">Q5PQM0</a> , <a href="#">Q91VX9</a> , <a href="#">NP_071929.3</a>
Reactivity	Human
Predicted	Mouse, Rat
Host	Rabbit
Clonality	Polyclonal
Isotype	Rabbit IgG
Calculated MW	79755
Antigen Region	558-587

**TM168 Antibody (C-term) - Additional Information****Gene ID** 64418**Other Names**

Transmembrane protein 168, TMEM168

**Target/Specificity**

This TM168 antibody is generated from rabbits immunized with a KLH conjugated synthetic peptide between 558-587 amino acids from the C-terminal region of human TM168.

**Dilution**

WB~~1:1000

FC~~1:10~50

**Format**

Purified polyclonal antibody supplied in PBS with 0.09% (W/V) sodium azide. This antibody is purified through a protein A column, followed by peptide affinity purification.

**Storage**

Maintain refrigerated at 2-8°C for up to 2 weeks. For long term storage store at -20°C in small aliquots to prevent freeze-thaw cycles.

**Precautions**

TM168 Antibody (C-term) is for research use only and not for use in diagnostic or therapeutic procedures.

**TM168 Antibody (C-term) - Protein Information****Name** TMEM168 ([HGNC:25826](#))

**Function** Plays a key role in maintaining the cardiac electrical stability by modulating cell surface expression of SCN5A (PubMed:[32175648](#)). May play a role in the modulation of anxiety behavior by regulating GABAergic neuronal system in the nucleus accumbens (By similarity).

**Cellular Location**

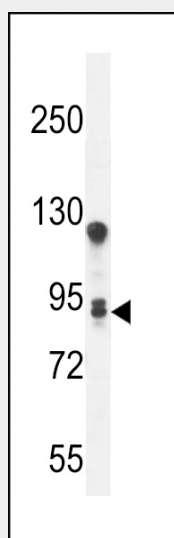
Nucleus membrane; Multi-pass membrane protein

**TM168 Antibody (C-term) - Protocols**

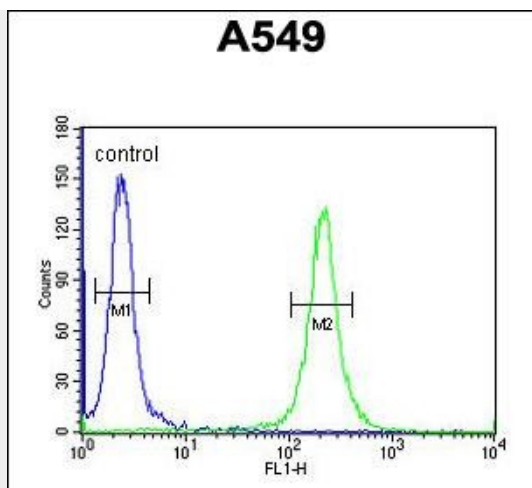
Provided below are standard protocols that you may find useful for product applications.

- [Western Blot](#)
- [Blocking Peptides](#)
- [Dot Blot](#)
- [Immunohistochemistry](#)
- [Immunofluorescence](#)
- [Immunoprecipitation](#)
- [Flow Cytometry](#)
- [Cell Culture](#)

**TM168 Antibody (C-term) - Images**



TM168 Antibody (C-term) (Cat. #AP11002b) western blot analysis in A549 cell line lysates (35ug/lane). This demonstrates the TM168 antibody detected the TM168 protein (arrow).



TM168 Antibody (C-term) (Cat. #AP11002b) flow cytometric analysis of A549 cells (right histogram) compared to a negative control cell (left histogram). FITC-conjugated goat-anti-rabbit secondary antibodies were used for the analysis.

#### **TM168 Antibody (C-term) - Background**

TMEM168 is a multi-pass membrane protein. It belongs to the TMEM168 family. The exact function of TMEM168 remains unknown.

#### **TM168 Antibody (C-term) - References**

Trynka, G., et al. Gut (2009) In press :  
Simpson, J.C., et al. EMBO Rep. 1(3):287-292(2000)