

HEMK1 Antibody (C-term)
Affinity Purified Rabbit Polyclonal Antibody (Pab)
Catalog # AP11010b**Specification**

HEMK1 Antibody (C-term) - Product Information

Application	FC, IHC-P, WB,E
Primary Accession	O9Y5R4
Other Accession	NP_057257.1
Reactivity	Human
Host	Rabbit
Clonality	Polyclonal
Isotype	Rabbit IgG
Calculated MW	38231
Antigen Region	311-338

HEMK1 Antibody (C-term) - Additional Information**Gene ID** 51409**Other Names**

HemK methyltransferase family member 1, 211-, MHsaHemKP, HEMK1, HEMK

Target/Specificity

This HEMK1 antibody is generated from rabbits immunized with a KLH conjugated synthetic peptide between 311-338 amino acids from the C-terminal region of human HEMK1.

Dilution

FC~~1:10~50

IHC-P~~1:50~100

WB~~1:1000

E~~Use at an assay dependent concentration.

Format

Purified polyclonal antibody supplied in PBS with 0.09% (W/V) sodium azide. This antibody is purified through a protein A column, followed by peptide affinity purification.

Storage

Maintain refrigerated at 2-8°C for up to 2 weeks. For long term storage store at -20°C in small aliquots to prevent freeze-thaw cycles.

Precautions

HEMK1 Antibody (C-term) is for research use only and not for use in diagnostic or therapeutic procedures.

HEMK1 Antibody (C-term) - Protein Information**Name** HEMK1

Synonyms HEMK

Function N5-glutamine methyltransferase responsible for the methylation of the glutamine residue in the universally conserved GGQ motif of the mitochondrial translation release factors MTRF1, MTRF1L, MRPL58/ICT1 and MTRFR.

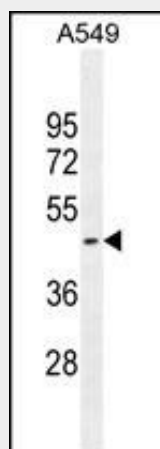
Cellular Location

Mitochondrion.

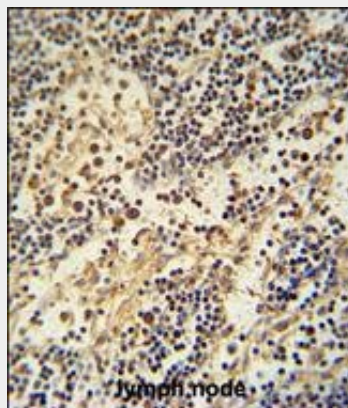
HEMK1 Antibody (C-term) - Protocols

Provided below are standard protocols that you may find useful for product applications.

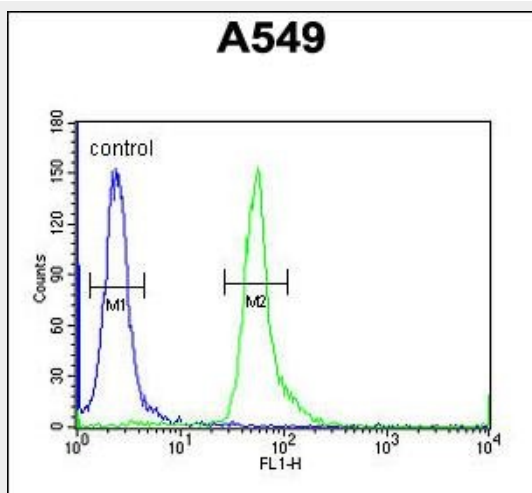
- [Western Blot](#)
- [Blocking Peptides](#)
- [Dot Blot](#)
- [Immunohistochemistry](#)
- [Immunofluorescence](#)
- [Immunoprecipitation](#)
- [Flow Cytometry](#)
- [Cell Culture](#)

HEMK1 Antibody (C-term) - Images

HEMK1 Antibody (C-term) (Cat. #AP11010b) western blot analysis in A549 cell line lysates (35ug/lane). This demonstrates the HEMK1 antibody detected the HEMK1 protein (arrow).



HEMK1 antibody (C-term) (Cat. #AP11010b) immunohistochemistry analysis in formalin fixed and paraffin embedded human lymph node followed by peroxidase conjugation of the secondary antibody and DAB staining. This data demonstrates the use of the HEMK1 antibody (C-term) for immunohistochemistry. Clinical relevance has not been evaluated.



HEMK1 Antibody (C-term) (Cat. #AP11010b) flow cytometric analysis of A549 cells (right histogram) compared to a negative control cell (left histogram). FITC-conjugated goat-anti-rabbit secondary antibodies were used for the analysis.

HEMK1 Antibody (C-term) - Background

Probable protein methyltransferase. May methylate a Gln residue in target proteins (By similarity).

HEMK1 Antibody (C-term) - References

Ishizawa, T., et al. Biochem. Biophys. Res. Commun. 373(1):99-103(2008)
Bujnicki, J.M., et al. IUBMB Life 48(3):247-249(1999)