

PPRC1 Antibody (C-term)
Affinity Purified Rabbit Polyclonal Antibody (Pab)
Catalog # AP11011C

Specification

PPRC1 Antibody (C-term) - Product Information

Application	IHC-P, WB,E
Primary Accession	Q5VV67
Other Accession	Q6NZN1 , NP_055877.3
Reactivity	Human
Predicted	Mouse
Host	Rabbit
Clonality	Polyclonal
Isotype	Rabbit IgG
Calculated MW	177544
Antigen Region	1636-1664

PPRC1 Antibody (C-term) - Additional Information

Gene ID 23082

Other Names

Peroxisome proliferator-activated receptor gamma coactivator-related protein 1, PGC-1-related coactivator, PRC, PPRC1, KIAA0595

Target/Specificity

This PPRC1 antibody is generated from rabbits immunized with a KLH conjugated synthetic peptide between 1636-1664 amino acids from the C-terminal region of human PPRC1.

Dilution

IHC-P~~1:50~100

WB~~1:1000

E~~Use at an assay dependent concentration.

Format

Purified polyclonal antibody supplied in PBS with 0.09% (W/V) sodium azide. This antibody is purified through a protein A column, followed by peptide affinity purification.

Storage

Maintain refrigerated at 2-8°C for up to 2 weeks. For long term storage store at -20°C in small aliquots to prevent freeze-thaw cycles.

Precautions

PPRC1 Antibody (C-term) is for research use only and not for use in diagnostic or therapeutic procedures.

PPRC1 Antibody (C-term) - Protein Information

Name PPRC1

Synonyms KIAA0595

Function Acts as a coactivator during transcriptional activation of nuclear genes related to mitochondrial biogenesis and cell growth. Involved in the transcription coactivation of CREB and NRF1 target genes.

Cellular Location

Nucleus. Note=Colocalizes with NRF1.

Tissue Location

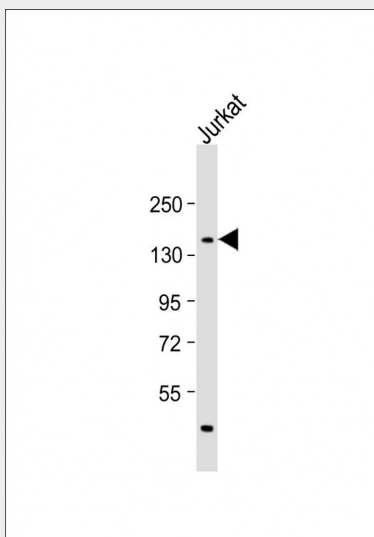
Strongly expressed in heart and skeletal muscle, moderately in lung, placenta, intestine, liver, kidney, spleen, thymus, colon and brain. Also expressed in several oncocytic thyroid tumors

PPRC1 Antibody (C-term) - Protocols

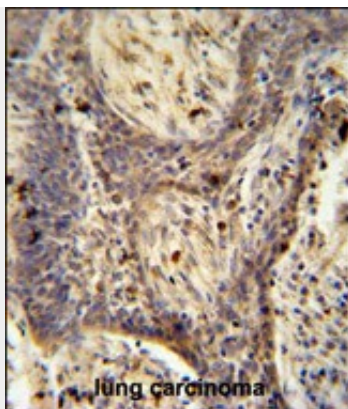
Provided below are standard protocols that you may find useful for product applications.

- [Western Blot](#)
- [Blocking Peptides](#)
- [Dot Blot](#)
- [Immunohistochemistry](#)
- [Immunofluorescence](#)
- [Immunoprecipitation](#)
- [Flow Cytometry](#)
- [Cell Culture](#)

PPRC1 Antibody (C-term) - Images



Anti-PPRC1 Antibody (C-term) at 1:1000 dilution + Jurkat whole cell lysate Lysates/proteins at 20 µg per lane. Secondary Goat Anti-Rabbit IgG, (H+L), Peroxidase conjugated at 1/10000 dilution. Predicted band size : 178 kDa Blocking/Dilution buffer: 5% NFDM/TBST.



PPRC1 antibody (C-term) (Cat. #AP11011c) immunohistochemistry analysis in formalin fixed and paraffin embedded human lung carcinoma followed by peroxidase conjugation of the secondary antibody and DAB staining. This data demonstrates the use of the PPRC1 antibody (C-term) for immunohistochemistry. Clinical relevance has not been evaluated.

PPRC1 Antibody (C-term) - Background

The protein encoded by this gene is similar to PPAR-gamma coactivator 1 (PPARGC1/PGC-1), a protein that can activate mitochondrial biogenesis in part through a direct interaction with nuclear respiratory factor 1 (NRF1). This protein has been shown to interact with NRF1. It is thought to be a functional relative of PPARGC1 that activates mitochondrial biogenesis through NRF1 in response to proliferative signals.

PPRC1 Antibody (C-term) - References

Reiling, E., et al. Eur. J. Hum. Genet. 17(8):1056-1062(2009)
Vercauteren, K., et al. J. Biol. Chem. 284(4):2307-2319(2009)
Raharijaona, M., et al. PLoS ONE 4 (11), E7964 (2009) :
Lu, Y., et al. J. Lipid Res. 49(12):2582-2589(2008)
Vercauteren, K., et al. J. Biol. Chem. 283(18):12102-12111(2008)