

**ZC3H3 Antibody (C-term)**  
**Affinity Purified Rabbit Polyclonal Antibody (Pab)**  
**Catalog # AP11020b****Specification**

---

**ZC3H3 Antibody (C-term) - Product Information**

Application	WB, IHC-P,E
Primary Accession	<a href="#">Q8IXZ2</a>
Other Accession	<a href="#">Q8CHP0</a> , <a href="#">NP_055932.2</a>
Reactivity	Human
Predicted	Mouse
Host	Rabbit
Clonality	Polyclonal
Isotype	Rabbit IgG
Calculated MW	101941
Antigen Region	920-948

**ZC3H3 Antibody (C-term) - Additional Information****Gene ID** 23144**Other Names**

Zinc finger CCCH domain-containing protein 3, ZC3H3, KIAA0150, ZC3HDC3

**Target/Specificity**

This ZC3H3 antibody is generated from rabbits immunized with a KLH conjugated synthetic peptide between 920-948 amino acids from the C-terminal region of human ZC3H3.

**Dilution**

WB~~1:1000

IHC-P~~1:50~100

E~~Use at an assay dependent concentration.

**Format**

Purified polyclonal antibody supplied in PBS with 0.09% (W/V) sodium azide. This antibody is purified through a protein A column, followed by peptide affinity purification.

**Storage**

Maintain refrigerated at 2-8°C for up to 2 weeks. For long term storage store at -20°C in small aliquots to prevent freeze-thaw cycles.

**Precautions**

ZC3H3 Antibody (C-term) is for research use only and not for use in diagnostic or therapeutic procedures.

**ZC3H3 Antibody (C-term) - Protein Information****Name** ZC3H3

**Function** Required for the export of polyadenylated mRNAs from the nucleus (PubMed:[19364924](#)). Enhances ACVR1B-induced SMAD-dependent transcription. Binds to single-stranded DNA but not to double-stranded DNA in vitro. Involved in RNA cleavage (By similarity).

**Cellular Location**

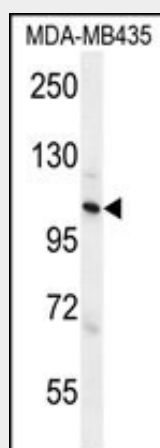
Nucleus {ECO:0000250|UniProtKB:Q8CHP0}.

**ZC3H3 Antibody (C-term) - Protocols**

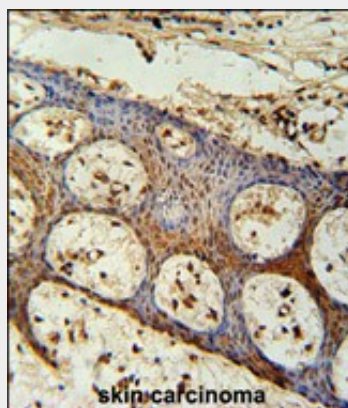
Provided below are standard protocols that you may find useful for product applications.

- [Western Blot](#)
- [Blocking Peptides](#)
- [Dot Blot](#)
- [Immunohistochemistry](#)
- [Immunofluorescence](#)
- [Immunoprecipitation](#)
- [Flow Cytometry](#)
- [Cell Culture](#)

**ZC3H3 Antibody (C-term) - Images**



ZC3H3 Antibody (C-term) (Cat. #AP11020b) western blot analysis in MDA-MB435 cell line lysates (35ug/lane). This demonstrates the ZC3H3 antibody detected the ZC3H3 protein (arrow).



ZC3H3 Antibody (C-term) (Cat. #AP11020b) immunohistochemistry analysis in formalin fixed and

paraffin embedded human skin carcinoma followed by peroxidase conjugation of the secondary antibody and DAB staining. This data demonstrates the use of the ZC3H3 Antibody (C-term) for immunohistochemistry. Clinical relevance has not been evaluated.

**ZC3H3 Antibody (C-term) - Background**

Contains 5 C3H1 type zinc fingers.

**ZC3H3 Antibody (C-term) - References**

Yoshida, T., et al. Int. J. Mol. Med. 25(4):649-656(2010)  
Oguri, M., et al. Am. J. Hypertens. 23(1):70-77(2010)  
Hurt, J.A., et al. J. Cell Biol. 185(2):265-277(2009)