

**ZNF678 Antibody (C-term)**  
**Affinity Purified Rabbit Polyclonal Antibody (Pab)**  
**Catalog # AP11023b****Specification**

---

**ZNF678 Antibody (C-term) - Product Information**

Application	WB,E
Primary Accession	<a href="#">Q5SXM1</a>
Reactivity	Human
Host	Rabbit
Clonality	Polyclonal
Isotype	Rabbit IgG
Calculated MW	61411
Antigen Region	489-518

**ZNF678 Antibody (C-term) - Additional Information****Gene ID** 339500**Other Names**

Zinc finger protein 678, ZNF678

**Target/Specificity**

This ZNF678 antibody is generated from rabbits immunized with a KLH conjugated synthetic peptide between 489-518 amino acids from the C-terminal region of human ZNF678.

**Dilution**

WB~~1:1000

**Format**

Purified polyclonal antibody supplied in PBS with 0.09% (W/V) sodium azide. This antibody is purified through a protein A column, followed by peptide affinity purification.

**Storage**

Maintain refrigerated at 2-8°C for up to 2 weeks. For long term storage store at -20°C in small aliquots to prevent freeze-thaw cycles.

**Precautions**

ZNF678 Antibody (C-term) is for research use only and not for use in diagnostic or therapeutic procedures.

**ZNF678 Antibody (C-term) - Protein Information****Name** ZNF678**Function** May be involved in transcriptional regulation.**Cellular Location**

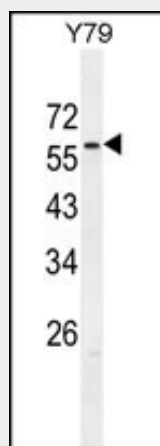
Nucleus.

### **ZNF678 Antibody (C-term) - Protocols**

Provided below are standard protocols that you may find useful for product applications.

- [Western Blot](#)
- [Blocking Peptides](#)
- [Dot Blot](#)
- [Immunohistochemistry](#)
- [Immunofluorescence](#)
- [Immunoprecipitation](#)
- [Flow Cytometry](#)
- [Cell Culture](#)

### **ZNF678 Antibody (C-term) - Images**



ZNF678 Antibody (C-term) (Cat. #AP11023b) western blot analysis in Y79 cell line lysates (35ug/lane). This demonstrates the ZNF678 antibody detected the ZNF678 protein (arrow).

### **ZNF678 Antibody (C-term) - Background**

May be involved in transcriptional regulation.