

LRC40 Antibody (C-term)
Affinity Purified Rabbit Polyclonal Antibody (Pab)
Catalog # AP11024b**Specification**

LRC40 Antibody (C-term) - Product Information

Application	WB, IHC-P, FC,E
Primary Accession	O9H9A6
Other Accession	O9CRC8 , O4R3P6 , NP_060238.3
Reactivity	Human
Predicted	Monkey, Mouse
Host	Rabbit
Clonality	Polyclonal
Isotype	Rabbit IgG
Calculated MW	68250
Antigen Region	343-371

LRC40 Antibody (C-term) - Additional Information**Gene ID** 55631**Other Names**

Leucine-rich repeat-containing protein 40, LRRC40

Target/Specificity

This LRC40 antibody is generated from rabbits immunized with a KLH conjugated synthetic peptide between 343-371 amino acids from the C-terminal region of human LRC40.

Dilution

WB~~1:1000

IHC-P~~1:50~100

FC~~1:10~50

E~~Use at an assay dependent concentration.

Format

Purified polyclonal antibody supplied in PBS with 0.09% (W/V) sodium azide. This antibody is purified through a protein A column, followed by peptide affinity purification.

Storage

Maintain refrigerated at 2-8°C for up to 2 weeks. For long term storage store at -20°C in small aliquots to prevent freeze-thaw cycles.

Precautions

LRC40 Antibody (C-term) is for research use only and not for use in diagnostic or therapeutic procedures.

LRC40 Antibody (C-term) - Protein Information

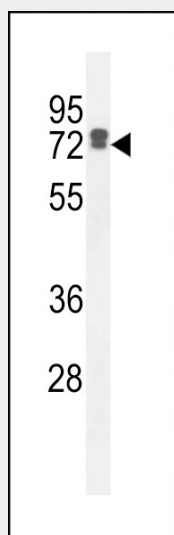
Name LRRC40

LRRC40 Antibody (C-term) - Protocols

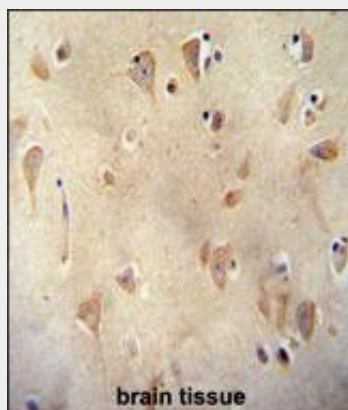
Provided below are standard protocols that you may find useful for product applications.

- [Western Blot](#)
- [Blocking Peptides](#)
- [Dot Blot](#)
- [Immunohistochemistry](#)
- [Immunofluorescence](#)
- [Immunoprecipitation](#)
- [Flow Cytometry](#)
- [Cell Culture](#)

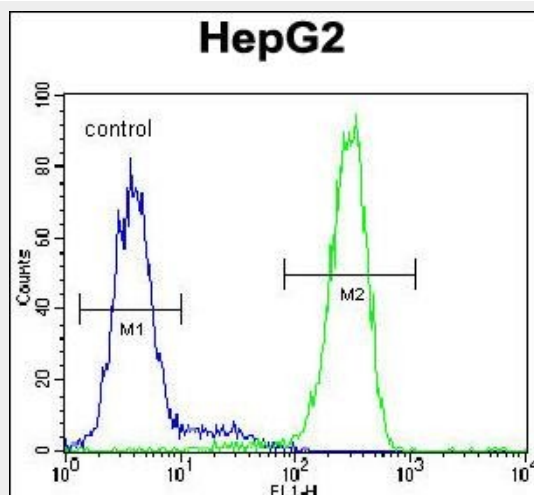
LRRC40 Antibody (C-term) - Images



LRRC40 Antibody (C-term) (Cat. #AP11024b) western blot analysis in HepG2 cell line lysates (35ug/lane). This demonstrates the LRRC40 antibody detected the LRRC40 protein (arrow).



LRRC40 antibody (C-term) (Cat. #AP11024b) immunohistochemistry analysis in formalin fixed and paraffin embedded human brain tissue followed by peroxidase conjugation of the secondary antibody and DAB staining. This data demonstrates the use of the LRRC40 antibody (C-term) for immunohistochemistry. Clinical relevance has not been evaluated.



LRC40 Antibody (C-term) (Cat. #AP11024b) flow cytometric analysis of HepG2 cells (right histogram) compared to a negative control cell (left histogram). FITC-conjugated goat-anti-rabbit secondary antibodies were used for the analysis.

LRC40 Antibody (C-term) - References

Gregory, S.G., et al. Nature 441(7091):315-321(2006)
Kimura, K., et al. Genome Res. 16(1):55-65(2006)