

OTUD3 Antibody (Center)
Affinity Purified Rabbit Polyclonal Antibody (Pab)
Catalog # AP11031C

Specification

OTUD3 Antibody (Center) - Product Information

Application	WB, IHC-P-Leica,E
Primary Accession	Q5T2D3
Other Accession	NP_056022.1
Reactivity	Human
Host	Rabbit
Clonality	Polyclonal
Isotype	Rabbit IgG
Antigen Region	192-220

OTUD3 Antibody (Center) - Additional Information

Gene ID 23252

Other Names

OTU domain-containing protein 3, OTUD3, KIAA0459

Target/Specificity

This OTUD3 antibody is generated from rabbits immunized with a KLH conjugated synthetic peptide between 192-220 amino acids from the Central region of human OTUD3.

Dilution

WB~~1:2000

IHC-P-Leica~~1:500

Format

Purified polyclonal antibody supplied in PBS with 0.09% (W/V) sodium azide. This antibody is purified through a protein A column, followed by peptide affinity purification.

Storage

Maintain refrigerated at 2-8°C for up to 2 weeks. For long term storage store at -20°C in small aliquots to prevent freeze-thaw cycles.

Precautions

OTUD3 Antibody (Center) is for research use only and not for use in diagnostic or therapeutic procedures.

OTUD3 Antibody (Center) - Protein Information

Name OTUD3 ([HGNC:29038](#))

Function Deubiquitinating enzyme that hydrolyzes 'Lys-6'- and 'Lys- 11'-linked polyubiquitin. Also hydrolyzes heterotypic (mixed and branched) and homotypic chains (PubMed:[23827681](#)).

PubMed:[32011234](#), PubMed:[35675826](#)). Important regulator of energy metabolism (PubMed:[35675826](#)). Glucose and fatty acids trigger its nuclear translocation by CBP-dependent acetylation (PubMed:[35675826](#)). In the nucleus, deubiquitinates and stabilizes the nuclear receptor PPAR α regulating the expression of various genes involved in glucose and lipid metabolism and oxidative phosphorylation (PubMed:[35675826](#)). Also acts as a negative regulator of the ribosome quality control (RQC) by mediating deubiquitination of 40S ribosomal proteins RPS10/eS10 and RPS20/uS10, thereby antagonizing ZNF598-mediated 40S ubiquitination (PubMed:[32011234](#)).

Cellular Location

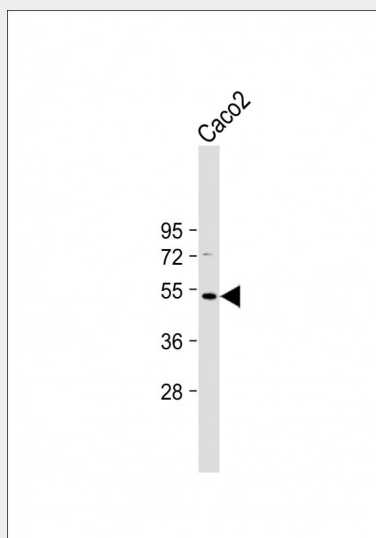
Cytoplasm. Nucleus. Note=Glucose or fatty acid promote nuclear translocation upon acetylation.

OTUD3 Antibody (Center) - Protocols

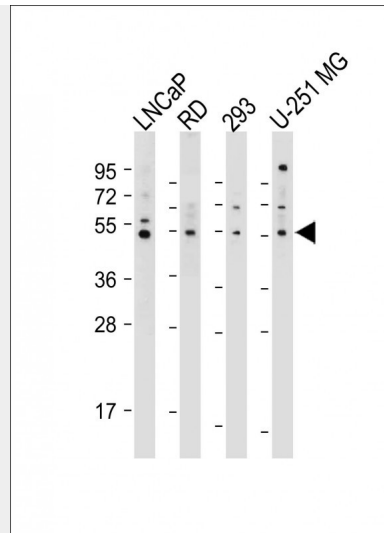
Provided below are standard protocols that you may find useful for product applications.

- [Western Blot](#)
- [Blocking Peptides](#)
- [Dot Blot](#)
- [Immunohistochemistry](#)
- [Immunofluorescence](#)
- [Immunoprecipitation](#)
- [Flow Cytometry](#)
- [Cell Culture](#)

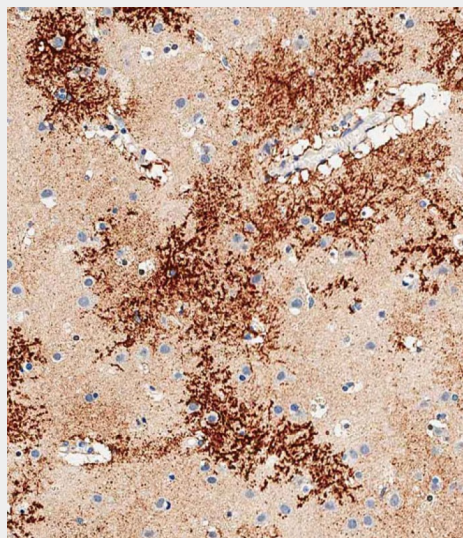
OTUD3 Antibody (Center) - Images



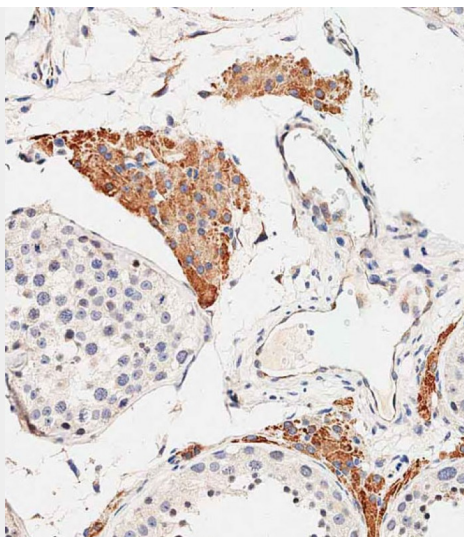
Anti-OTUD3 Antibody (Center) at 1:2000 dilution + Caco2 whole cell lysate Lysates/proteins at 20 μ g per lane. Secondary Goat Anti-Rabbit IgG, (H+L), Peroxidase conjugated at 1/10000 dilution. Predicted band size : 45 kDa Blocking/Dilution buffer: 5% NFDM/TBST.



All lanes : Anti-OTUD3 Antibody (Center) at 1:2000 dilution Lane 1: LNCaP whole cell lysate Lane 2: RD whole cell lysate Lane 3: 293 whole cell lysate Lane 4: U-251 MG whole cell lysate Lysates/proteins at 20 µg per lane. Secondary Goat Anti-Rabbit IgG, (H+L), Peroxidase conjugated at 1/10000 dilution. Predicted band size : 45 kDa Blocking/Dilution buffer: 5% NFDM/TBST.



Immunohistochemical analysis of paraffin-embedded human brain tissue using AP11031C performed on the Leica® BOND RXm. Tissue was fixed with formaldehyde at room temperature, antigen retrieval was by heat mediation with a EDTA buffer (pH9. 0). Samples were incubated with primary antibody(1:500) for 1 hours at room temperature. A undiluted biotinylated CRF Anti-Polyvalent HRP Polymer antibody was used as the secondary antibody.



Immunohistochemical analysis of paraffin-embedded human testis tissue using AP11031C performed on the Leica® BOND RXm. Tissue was fixed with formaldehyde at room temperature, antigen retrieval was by heat mediation with a EDTA buffer (pH9. 0). Samples were incubated with primary antibody(1:500) for 1 hours at room temperature. A undiluted biotinylated CRF Anti-Polyvalent HRP Polymer antibody was used as the secondary antibody.

OTUD3 Antibody (Center) - References

- McGovern, D.P., et al. Nat. Genet. 42(4):332-337(2010)
Franke, A., et al. Nat. Genet. 42(4):292-294(2010)
Barrett, J.C., et al. Nat. Genet. 41(12):1330-1334(2009)
Silverberg, M.S., et al. Nat. Genet. 41(2):216-220(2009)
Venter, J.C., et al. Science 291(5507):1304-1351(2001)