

CCDC17 Antibody (C-term)
Affinity Purified Rabbit Polyclonal Antibody (Pab)
Catalog # AP11038b**Specification**

CCDC17 Antibody (C-term) - Product Information

Application	IHC-P, FC, WB,E
Primary Accession	O96LX7
Other Accession	NP_001177111.1 , NP_001108410.2
Reactivity	Human
Host	Rabbit
Clonality	Polyclonal
Isotype	Rabbit IgG
Calculated MW	67721
Antigen Region	481-509

CCDC17 Antibody (C-term) - Additional Information**Gene ID** 149483**Other Names**

Coiled-coil domain-containing protein 17, CCDC17

Target/Specificity

This CCDC17 antibody is generated from rabbits immunized with a KLH conjugated synthetic peptide between 481-509 amino acids from the C-terminal region of human CCDC17.

Dilution

IHC-P~~1:50~100

FC~~1:10~50

WB~~1:1000

E~~Use at an assay dependent concentration.

Format

Purified polyclonal antibody supplied in PBS with 0.09% (W/V) sodium azide. This antibody is purified through a protein A column, followed by peptide affinity purification.

Storage

Maintain refrigerated at 2-8°C for up to 2 weeks. For long term storage store at -20°C in small aliquots to prevent freeze-thaw cycles.

Precautions

CCDC17 Antibody (C-term) is for research use only and not for use in diagnostic or therapeutic procedures.

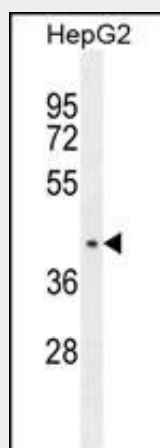
CCDC17 Antibody (C-term) - Protein Information**Name** CCDC17

CCDC17 Antibody (C-term) - Protocols

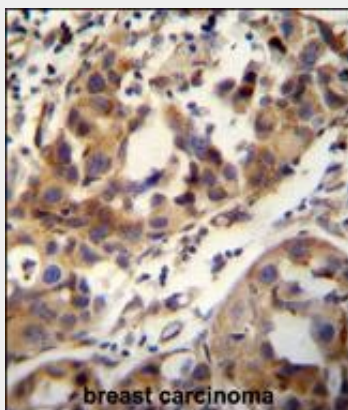
Provided below are standard protocols that you may find useful for product applications.

- [Western Blot](#)
- [Blocking Peptides](#)
- [Dot Blot](#)
- [Immunohistochemistry](#)
- [Immunofluorescence](#)
- [Immunoprecipitation](#)
- [Flow Cytometry](#)
- [Cell Culture](#)

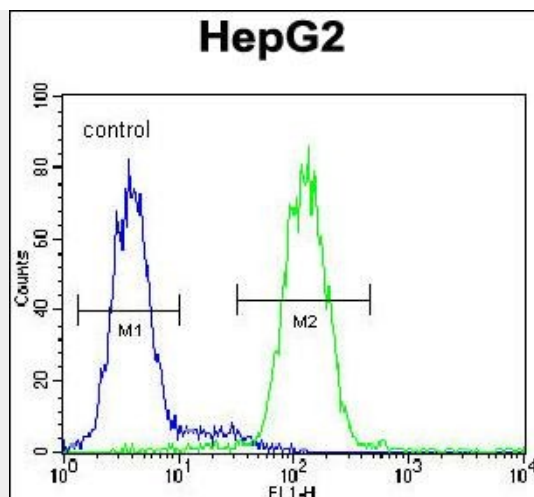
CCDC17 Antibody (C-term) - Images



CCDC17 Antibody (C-term) (Cat. #AP11038b) western blot analysis in HepG2 cell line lysates (35ug/lane). This demonstrates the CCDC17 antibody detected the CCDC17 protein (arrow).



CCDC17 antibody (C-term) (Cat. #AP11038b) immunohistochemistry analysis in formalin fixed and paraffin embedded human breast carcinoma followed by peroxidase conjugation of the secondary antibody and DAB staining. This data demonstrates the use of the CCDC17 antibody (C-term) for immunohistochemistry. Clinical relevance has not been evaluated.



CCDC17 Antibody (C-term) (Cat. #AP11038b) flow cytometric analysis of HepG2 cells (right histogram) compared to a negative control cell (left histogram). FITC-conjugated goat-anti-rabbit secondary antibodies were used for the analysis.