

**TTC30B Antibody (C-term)**  
**Affinity Purified Rabbit Polyclonal Antibody (Pab)**  
**Catalog # AP11041b****Specification**

---

**TTC30B Antibody (C-term) - Product Information**

Application	WB,E
Primary Accession	<a href="#">Q8N4P2</a>
Other Accession	<a href="#">Q6INU8</a> , <a href="#">Q86WT1</a> , <a href="#">A7YE96</a> , <a href="#">A2VE45</a> , <a href="#">NP_689730.2</a>
Reactivity	Human, Mouse
Predicted	Bovine, Zebrafish, Xenopus
Host	Rabbit
Clonality	Polyclonal
Isotype	Rabbit IgG
Calculated MW	76099
Antigen Region	554-582

**TTC30B Antibody (C-term) - Additional Information****Gene ID** 150737**Other Names**

Tetratricopeptide repeat protein 30B, TPR repeat protein 30B, TTC30B

**Target/Specificity**

This TTC30B antibody is generated from rabbits immunized with a KLH conjugated synthetic peptide between 554-582 amino acids from the C-terminal region of human TTC30B.

**Dilution**

WB~~1:1000

E~~Use at an assay dependent concentration.

**Format**

Purified polyclonal antibody supplied in PBS with 0.09% (W/V) sodium azide. This antibody is purified through a protein A column, followed by peptide affinity purification.

**Storage**

Maintain refrigerated at 2-8°C for up to 2 weeks. For long term storage store at -20°C in small aliquots to prevent freeze-thaw cycles.

**Precautions**

TTC30B Antibody (C-term) is for research use only and not for use in diagnostic or therapeutic procedures.

**TTC30B Antibody (C-term) - Protein Information****Name** IFT70B ([HGNC:26425](#))

**Synonyms** TTC30B

**Function** Required for polyglutamylation of axonemal tubulin. Plays a role in anterograde intraflagellar transport (IFT), the process by which cilia precursors are transported from the base of the cilium to the site of their incorporation at the tip.

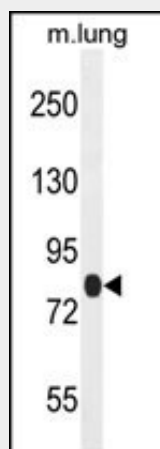
**Cellular Location**

Cell projection, cilium.

**TTC30B Antibody (C-term) - Protocols**

Provided below are standard protocols that you may find useful for product applications.

- [Western Blot](#)
- [Blocking Peptides](#)
- [Dot Blot](#)
- [Immunohistochemistry](#)
- [Immunofluorescence](#)
- [Immunoprecipitation](#)
- [Flow Cytometry](#)
- [Cell Culture](#)

**TTC30B Antibody (C-term) - Images**

TTC30B Antibody (C-term) (Cat. #AP11041b) western blot analysis in mouse lung tissue lysates (35ug/lane). This demonstrates the TTC30B antibody detected the TTC30B protein (arrow).

**TTC30B Antibody (C-term) - Background**

Required for polyglutamylation of axonemal tubulin (By similarity). Plays a role in anterograde intraflagellar transport (IFT), the process by which cilia precursors are transported from the base of the cilium to the site of their incorporation at the tip (By similarity).

**TTC30B Antibody (C-term) - References**

Kimura, K., et al. Genome Res. 16(1):55-65(2006)  
Ota, T., et al. Nat. Genet. 36(1):40-45(2004)