

**GNL3L Antibody (N-term)**  
**Affinity Purified Rabbit Polyclonal Antibody (Pab)**  
**Catalog # AP11045A**

**Specification**

---

**GNL3L Antibody (N-term) - Product Information**

Application	WB, FC,E
Primary Accession	<a href="#">O9NVN8</a>
Other Accession	<a href="#">O6PGG6</a> , <a href="#">NP_001171748.1</a> , <a href="#">NP_061940.1</a>
Reactivity	Human
Predicted	Mouse
Host	Rabbit
Clonality	Polyclonal
Isotype	Rabbit IgG
Calculated MW	65573
Antigen Region	102-130

**GNL3L Antibody (N-term) - Additional Information**

**Gene ID** 54552

**Other Names**

Guanine nucleotide-binding protein-like 3-like protein, GNL3L

**Target/Specificity**

This GNL3L antibody is generated from rabbits immunized with a KLH conjugated synthetic peptide between 102-130 amino acids from the N-terminal region of human GNL3L.

**Dilution**

WB~~1:1000

FC~~1:10~50

**Format**

Purified polyclonal antibody supplied in PBS with 0.09% (W/V) sodium azide. This antibody is purified through a protein A column, followed by peptide affinity purification.

**Storage**

Maintain refrigerated at 2-8°C for up to 2 weeks. For long term storage store at -20°C in small aliquots to prevent freeze-thaw cycles.

**Precautions**

GNL3L Antibody (N-term) is for research use only and not for use in diagnostic or therapeutic procedures.

**GNL3L Antibody (N-term) - Protein Information**

**Name** GNL3L

**Function** Stabilizes TERF1 telomeric association by preventing TERF1 recruitment by PML. Stabilizes TERF1 protein by preventing its ubiquitination and hence proteasomal degradation. Does so by interfering with TERF1-binding to FBXO4 E3 ubiquitin-protein ligase. Required for cell proliferation. By stabilizing TRF1 protein during mitosis, promotes metaphase-to-anaphase transition. Stabilizes MDM2 protein by preventing its ubiquitination, and hence proteasomal degradation. By acting on MDM2, may affect TP53 activity. Required for normal processing of ribosomal pre-rRNA. Binds GTP.

**Cellular Location**

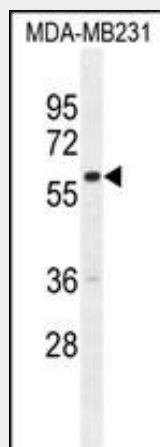
Nucleus, nucleolus.

**GNL3L Antibody (N-term) - Protocols**

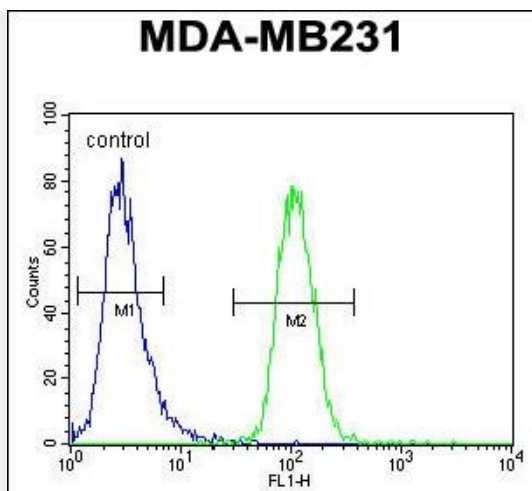
Provided below are standard protocols that you may find useful for product applications.

- [Western Blot](#)
- [Blocking Peptides](#)
- [Dot Blot](#)
- [Immunohistochemistry](#)
- [Immunofluorescence](#)
- [Immunoprecipitation](#)
- [Flow Cytometry](#)
- [Cell Culture](#)

**GNL3L Antibody (N-term) - Images**



GNL3L Antibody (N-term) (Cat. #AP11045a) western blot analysis in MDA-MB231 cell line lysates (35ug/lane). This demonstrates the GNL3L antibody detected the GNL3L protein (arrow).



GNL3L Antibody (N-term) (Cat. #AP11045a) flow cytometric analysis of MDA-MB231 cells (right histogram) compared to a negative control cell (left histogram). FITC-conjugated goat-anti-rabbit secondary antibodies were used for the analysis.

#### **GNL3L Antibody (N-term) - Background**

The protein encoded by this gene appears to be a nucleolar GTPase that is essential for ribosomal pre-rRNA processing and cell proliferation. Two transcript variants encoding the same protein have been found for this gene.

#### **GNL3L Antibody (N-term) - References**

Rao, M.R., et al. J. Mol. Biol. 364(4):637-654(2006)  
Du, X., et al. Mol. Biol. Cell 17(1):460-474(2006)