

**CYB561D1 Antibody (C-term)**  
**Affinity Purified Rabbit Polyclonal Antibody (Pab)**  
**Catalog # AP11046b**

**Specification**

---

**CYB561D1 Antibody (C-term) - Product Information**

Application	IHC-P, FC, WB,E
Primary Accession	<a href="#">Q8N8Q1</a>
Other Accession	<a href="#">NP_001127875.1</a>
Reactivity	Human, Mouse
Host	Rabbit
Clonality	Polyclonal
Isotype	Rabbit IgG
Antigen Region	200-229

**CYB561D1 Antibody (C-term) - Additional Information**

**Gene ID** 284613

**Other Names**

Cytochrome b561 domain-containing protein 1, CYB561D1

**Target/Specificity**

This CYB561D1 antibody is generated from rabbits immunized with a KLH conjugated synthetic peptide between 200-229 amino acids from the C-terminal region of human CYB561D1.

**Dilution**

IHC-P~~1:50~100

FC~~1:10~50

WB~~1:1000

E~~Use at an assay dependent concentration.

**Format**

Purified polyclonal antibody supplied in PBS with 0.09% (W/V) sodium azide. This antibody is purified through a protein A column, followed by peptide affinity purification.

**Storage**

Maintain refrigerated at 2-8°C for up to 2 weeks. For long term storage store at -20°C in small aliquots to prevent freeze-thaw cycles.

**Precautions**

CYB561D1 Antibody (C-term) is for research use only and not for use in diagnostic or therapeutic procedures.

**CYB561D1 Antibody (C-term) - Protein Information**

**Name** CYB561D1 ([HGNC:26804](#))

**Function** Probable transmembrane reductase that may use ascorbate as an electron donor and transfer electrons across membranes to reduce monodehydro-L-ascorbate radical and iron cations Fe(3+) in another cellular compartment.

**Cellular Location**

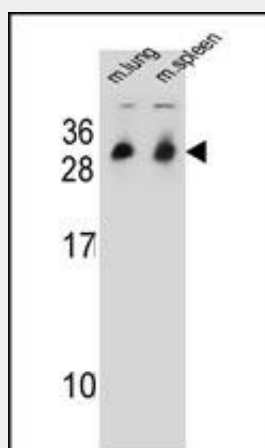
Membrane; Multi-pass membrane protein

**CYB561D1 Antibody (C-term) - Protocols**

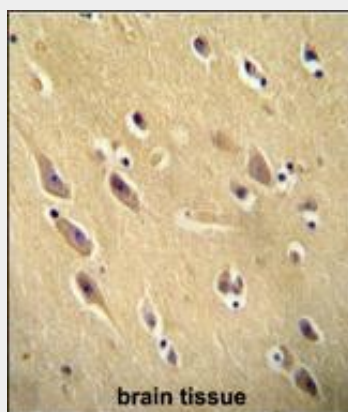
Provided below are standard protocols that you may find useful for product applications.

- [Western Blot](#)
- [Blocking Peptides](#)
- [Dot Blot](#)
- [Immunohistochemistry](#)
- [Immunofluorescence](#)
- [Immunoprecipitation](#)
- [Flow Cytometry](#)
- [Cell Culture](#)

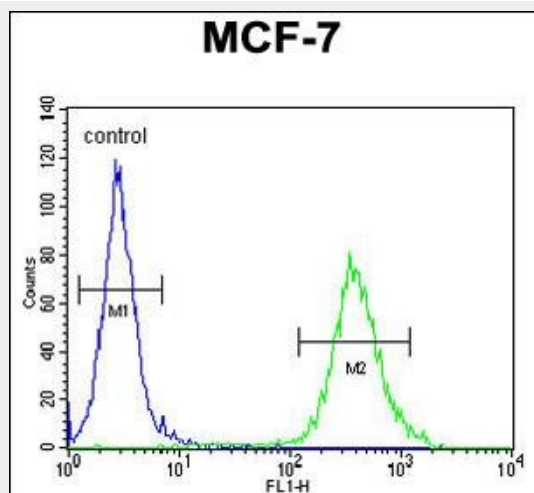
**CYB561D1 Antibody (C-term) - Images**



CYB561D1 Antibody (C-term) (Cat. #AP11046b) western blot analysis in mouse lung,spleen tissue lysates (35ug/lane).This demonstrates the CYB561D1 antibody detected the CYB561D1 protein (arrow).



CYB561D1 antibody (C-term) (Cat. #AP11046b) immunohistochemistry analysis in formalin fixed and paraffin embedded human brain tissue followed by peroxidase conjugation of the secondary antibody and DAB staining. This data demonstrates the use of the CYB561D1 antibody (C-term) for immunohistochemistry. Clinical relevance has not been evaluated.



CYB561D1 Antibody (C-term) (Cat. #AP11046b) flow cytometric analysis of MCF-7 cells (right histogram) compared to a negative control cell (left histogram). FITC-conjugated goat-anti-rabbit secondary antibodies were used for the analysis.

#### **CYB561D1 Antibody (C-term) - References**

Kottgen, A., et al. Nat. Genet. 42(5):376-384(2010)  
Shi, J., et al. Mol. Psychiatry (2010) In press :