

**ICAM2 Antibody (Center)**  
**Affinity Purified Rabbit Polyclonal Antibody (Pab)**  
**Catalog # AP11047c****Specification**

---

**ICAM2 Antibody (Center) - Product Information**

Application	WB, FC,E
Primary Accession	<a href="#">P13598</a>
Other Accession	<a href="#">NP_000864.2</a> , <a href="#">NP_001093256.1</a>
Reactivity	Human
Host	Rabbit
Clonality	Polyclonal
Isotype	Rabbit IgG
Calculated MW	30654
Antigen Region	191-218

**ICAM2 Antibody (Center) - Additional Information****Gene ID** 3384**Other Names**

Intercellular adhesion molecule 2, ICAM-2, CD102, ICAM2

**Target/Specificity**

This ICAM2 antibody is generated from rabbits immunized with a KLH conjugated synthetic peptide between 191-218 amino acids from the Central region of human ICAM2.

**Dilution**

WB~~1:1000

FC~~1:10~50

E~~Use at an assay dependent concentration.

**Format**

Purified polyclonal antibody supplied in PBS with 0.09% (W/V) sodium azide. This antibody is purified through a protein A column, followed by peptide affinity purification.

**Storage**

Maintain refrigerated at 2-8°C for up to 2 weeks. For long term storage store at -20°C in small aliquots to prevent freeze-thaw cycles.

**Precautions**

ICAM2 Antibody (Center) is for research use only and not for use in diagnostic or therapeutic procedures.

**ICAM2 Antibody (Center) - Protein Information****Name** ICAM2

**Function** ICAM proteins are ligands for the leukocyte adhesion protein LFA-1 (integrin alpha-L/beta-2). ICAM2 may play a role in lymphocyte recirculation by blocking LFA-1-dependent cell adhesion. It mediates adhesive interactions important for antigen-specific immune response, NK-cell mediated clearance, lymphocyte recirculation, and other cellular interactions important for immune response and surveillance.

#### Cellular Location

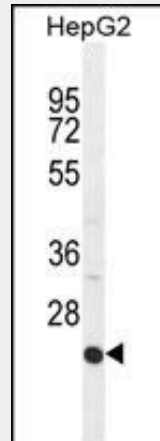
Membrane; Single-pass type I membrane protein. Cell projection, microvillus  
{ECO:0000250|UniProtKB:P35330}. Note=Co-localizes with RDX, EZR and MSN in microvilli.  
{ECO:0000250|UniProtKB:P35330}

### ICAM2 Antibody (Center) - Protocols

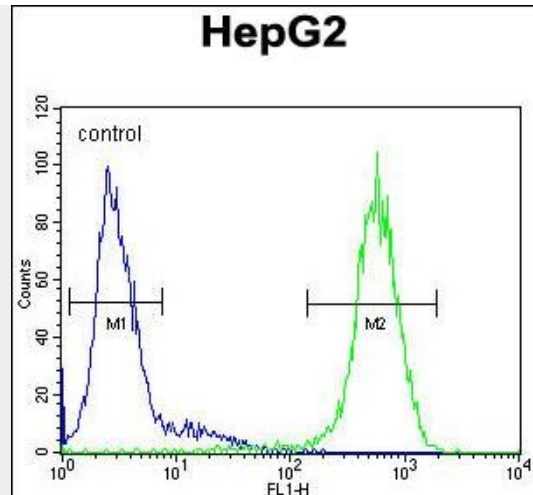
Provided below are standard protocols that you may find useful for product applications.

- [Western Blot](#)
- [Blocking Peptides](#)
- [Dot Blot](#)
- [Immunohistochemistry](#)
- [Immunofluorescence](#)
- [Immunoprecipitation](#)
- [Flow Cytometry](#)
- [Cell Culture](#)

### ICAM2 Antibody (Center) - Images



ICAM2 Antibody (Center) (Cat. #AP11047c) western blot analysis in HepG2 cell line lysates (35ug/lane). This demonstrates the ICAM2 antibody detected the ICAM2 protein (arrow).



ICAM2 Antibody (Center) (Cat. #AP11047c) flow cytometric analysis of HepG2 cells (right histogram) compared to a negative control cell (left histogram). FITC-conjugated goat-anti-rabbit secondary antibodies were used for the analysis.

#### **ICAM2 Antibody (Center) - Background**

The protein encoded by this gene is a member of the intercellular adhesion molecule (ICAM) family. All ICAM proteins are type I transmembrane glycoproteins, contain 2-9 immunoglobulin-like C2-type domains, and bind to the leukocyte adhesion LFA-1 protein. This protein may play a role in lymphocyte recirculation by blocking LFA-1-dependent cell adhesion. It mediates adhesive interactions important for antigen-specific immune response, NK-cell mediated clearance, lymphocyte recirculation, and other cellular interactions important for immune response and surveillance. Several transcript variants encoding the same protein have been found for this gene.

#### **ICAM2 Antibody (Center) - References**

Han, S., et al. Hum. Immunol. 71(7):727-730(2010)  
Rajaraman, P., et al. Cancer Epidemiol. Biomarkers Prev. 19(5):1356-1361(2010)  
Davila, S., et al. Genes Immun. 11(3):232-238(2010)  
Sato, H., et al. Biochim. Biophys. Acta 1790(10):1198-1205(2009)  
Rajaraman, P., et al. Cancer Epidemiol. Biomarkers Prev. 18(5):1651-1658(2009)