

CLEC2A Antibody (Center)
Affinity Purified Rabbit Polyclonal Antibody (Pab)
Catalog # AP11060c**Specification**

CLEC2A Antibody (Center) - Product Information

Application	WB,E
Primary Accession	Q6UWV9
Other Accession	NP_001124183.1
Reactivity	Human
Host	Rabbit
Clonality	Polyclonal
Isotype	Rabbit IgG
Calculated MW	19972
Antigen Region	79-107

CLEC2A Antibody (Center) - Additional Information**Gene ID** 387836**Other Names**

C-type lectin domain family 2 member A, Keratinocyte-associated C-type lectin, KACL, Proliferation-induced lymphocyte-associated receptor, PILAR, CLEC2A, KACL

Target/Specificity

This CLEC2A antibody is generated from rabbits immunized with a KLH conjugated synthetic peptide between 79-107 amino acids from the Central region of human CLEC2A.

Dilution

WB~~1:1000

E~~Use at an assay dependent concentration.

Format

Purified polyclonal antibody supplied in PBS with 0.09% (W/V) sodium azide. This antibody is purified through a protein A column, followed by peptide affinity purification.

Storage

Maintain refrigerated at 2-8°C for up to 2 weeks. For long term storage store at -20°C in small aliquots to prevent freeze-thaw cycles.

Precautions

CLEC2A Antibody (Center) is for research use only and not for use in diagnostic or therapeutic procedures.

CLEC2A Antibody (Center) - Protein Information**Name** CLEC2A

Synonyms KACL

Function Membrane-bound protein expressed mainly on keratinocytes which acts as a ligand to stimulate the activating receptor NKp65/KLRF2, expressed on the surface of natural killer (NK) cells (PubMed:[25510854](#)). Facilitates thereby dedicated immune recognition of keratinocytes leading to natural killer cell mediated cytotoxicity (PubMed:[20194751](#)). Also plays a role in modulating the extent of T-cell expansion (PubMed:[18550855](#)).

Cellular Location

Cell membrane; Single-pass type II membrane protein

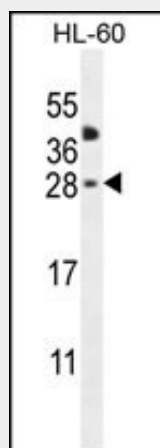
Tissue Location

Mainly expressed in skin. Also expressed in keratinocytes, spleen, thymus, small intestine, peripheral blood monocytes, bone marrow, ovary, testis and skin. High expression in CD8(+), B-lymphocytes and naive CD4(+) T-cells. Restricted mostly to proliferating lymphocytes. Not detected in myeloid leukocytes or natural killer (NK) cells.

CLEC2A Antibody (Center) - Protocols

Provided below are standard protocols that you may find useful for product applications.

- [Western Blot](#)
- [Blocking Peptides](#)
- [Dot Blot](#)
- [Immunohistochemistry](#)
- [Immunofluorescence](#)
- [Immunoprecipitation](#)
- [Flow Cytometry](#)
- [Cell Culture](#)

CLEC2A Antibody (Center) - Images

CLEC2A Antibody (Center) (Cat. #AP11060c) western blot analysis in HL-60 cell line lysates (35ug/lane). This demonstrates the CLEC2A antibody detected the CLEC2A protein (arrow).

CLEC2A Antibody (Center) - Background

CLEC2A belongs to the CLEC2 family of activation-induced, natural killer gene complex-encoded C-type lectin-like receptors (Spreu et al., 2007 [PubMed 18046548]).

CLEC2A Antibody (Center) - References

Spreu, J., et al. Proc. Natl. Acad. Sci. U.S.A. 107(11):5100-5105(2010)
Ozaki, Y., et al. J. Thromb. Haemost. 7 SUPPL 1, 191-194 (2009) :
Huarte, E., et al. Blood 112(4):1259-1268(2008)
Spreu, J., et al. Immunogenetics 59(12):903-912(2007)
Clark, H.F., et al. Genome Res. 13(10):2265-2270(2003)