

OR6V1 Antibody (C-term)
Affinity Purified Rabbit Polyclonal Antibody (Pab)
Catalog # AP11068b**Specification**

OR6V1 Antibody (C-term) - Product Information

Application	WB, FC,E
Primary Accession	Q8N148
Other Accession	NP_001001667.1
Reactivity	Human
Host	Rabbit
Clonality	Polyclonal
Isotype	Rabbit IgG
Calculated MW	34902
Antigen Region	242-270

OR6V1 Antibody (C-term) - Additional Information**Gene ID** 346517**Other Names**

Olfactory receptor 6V1, Olfactory receptor OR7-3, OR6V1

Target/Specificity

This OR6V1 antibody is generated from rabbits immunized with a KLH conjugated synthetic peptide between 242-270 amino acids from the C-terminal region of human OR6V1.

Dilution

WB~~1:1000

FC~~1:10~50

E~~Use at an assay dependent concentration.

Format

Purified polyclonal antibody supplied in PBS with 0.09% (W/V) sodium azide. This antibody is purified through a protein A column, followed by peptide affinity purification.

Storage

Maintain refrigerated at 2-8°C for up to 2 weeks. For long term storage store at -20°C in small aliquots to prevent freeze-thaw cycles.

Precautions

OR6V1 Antibody (C-term) is for research use only and not for use in diagnostic or therapeutic procedures.

OR6V1 Antibody (C-term) - Protein Information**Name** OR6V1

Function Odorant receptor.

Cellular Location

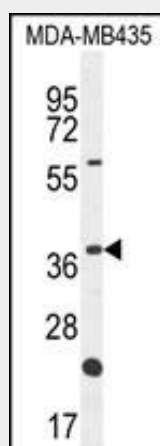
Cell membrane; Multi-pass membrane protein.

OR6V1 Antibody (C-term) - Protocols

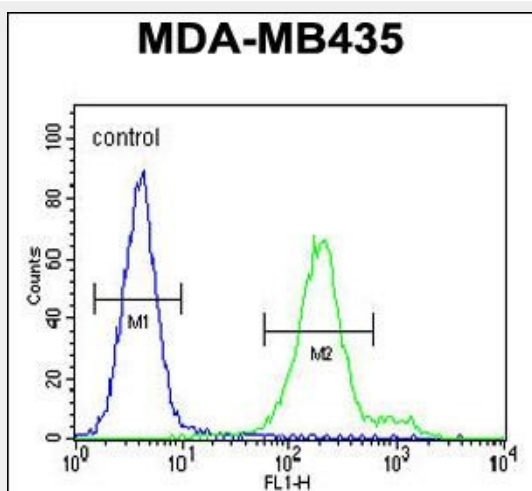
Provided below are standard protocols that you may find useful for product applications.

- [Western Blot](#)
- [Blocking Peptides](#)
- [Dot Blot](#)
- [Immunohistochemistry](#)
- [Immunofluorescence](#)
- [Immunoprecipitation](#)
- [Flow Cytometry](#)
- [Cell Culture](#)

OR6V1 Antibody (C-term) - Images



OR6V1 Antibody (C-term) (Cat. #AP11068b) western blot analysis in MDA-MB435 cell line lysates (35ug/lane). This demonstrates the OR6V1 antibody detected the OR6V1 protein (arrow).



OR6V1 Antibody (C-term) (Cat. #AP11068b) flow cytometric analysis of MDA-MB435 cells (right

histogram) compared to a negative control cell (left histogram). FITC-conjugated goat-anti-rabbit secondary antibodies were used for the analysis.

OR6V1 Antibody (C-term) - Background

Olfactory receptors interact with odorant molecules in the nose, to initiate a neuronal response that triggers the perception of a smell. The olfactory receptor proteins are members of a large family of G-protein-coupled receptors (GPCR) arising from single coding-exon genes. Olfactory receptors share a 7-transmembrane domain structure with many neurotransmitter and hormone receptors and are responsible for the recognition and G protein-mediated transduction of odorant signals. The olfactory receptor gene family is the largest in the genome. The nomenclature assigned to the olfactory receptor genes and proteins for this organism is independent of other organisms.

OR6V1 Antibody (C-term) - References

Malnic, B., et al. Proc. Natl. Acad. Sci. U.S.A. 101(8):2584-2589(2004)
Vanti, W.B., et al. Biochem. Biophys. Res. Commun. 305(1):67-71(2003)