

**FEZF1 Antibody (N-term)**  
**Affinity Purified Rabbit Polyclonal Antibody (Pab)**  
**Catalog # AP11083a****Specification**

---

**FEZF1 Antibody (N-term) - Product Information**

Application	WB,E
Primary Accession	<a href="#">A0PIY2</a>
Other Accession	<a href="#">NP_001019784.2</a> , <a href="#">NP_001153736.1</a>
Reactivity	Human, Mouse
Host	Rabbit
Clonality	Polyclonal
Isotype	Rabbit IgG
Calculated MW	52038
Antigen Region	67-96

**FEZF1 Antibody (N-term) - Additional Information****Gene ID** 389549**Other Names**

Fez family zinc finger protein 1, Zinc finger protein 312B, FEZF1, FEZ, ZNF312B

**Target/Specificity**

This FEZF1 antibody is generated from rabbits immunized with a KLH conjugated synthetic peptide between 67-96 amino acids from the N-terminal region of human FEZF1.

**Dilution**

WB~~1:1000

E~~Use at an assay dependent concentration.

**Format**

Purified polyclonal antibody supplied in PBS with 0.09% (W/V) sodium azide. This antibody is purified through a protein A column, followed by peptide affinity purification.

**Storage**

Maintain refrigerated at 2-8°C for up to 2 weeks. For long term storage store at -20°C in small aliquots to prevent freeze-thaw cycles.

**Precautions**

FEZF1 Antibody (N-term) is for research use only and not for use in diagnostic or therapeutic procedures.

**FEZF1 Antibody (N-term) - Protein Information****Name** FEZF1**Synonyms** FEZ, ZNF312B

**Function** Transcription repressor. Involved in the axonal projection and proper termination of olfactory sensory neurons (OSN). Plays a role in rostro-caudal patterning of the diencephalon and in prethalamic formation. Expression is required in OSN to cell-autonomously regulate OSN axon projections. Regulates non-cell-autonomously the layer formation of the olfactory bulb development and the interneurons. May be required for correct rostral migration of the interneuron progenitors (By similarity).

**Cellular Location**

Nucleus.

**Tissue Location**

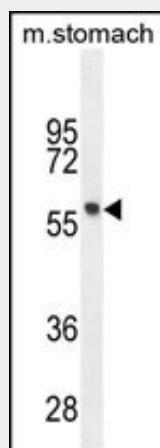
Expressed in brain. Little or no expression in other tissues. Overexpressed specifically in gastric cancers. A 2- to 20-fold increase is found in over 50% of gastric cancer tissues

**FEZF1 Antibody (N-term) - Protocols**

Provided below are standard protocols that you may find useful for product applications.

- [Western Blot](#)
- [Blocking Peptides](#)
- [Dot Blot](#)
- [Immunohistochemistry](#)
- [Immunofluorescence](#)
- [Immunoprecipitation](#)
- [Flow Cytometry](#)
- [Cell Culture](#)

**FEZF1 Antibody (N-term) - Images**



FEZF1 Antibody (N-term) (Cat. #AP11083a) western blot analysis in mouse stomach tissue lysates (35ug/lane). This demonstrates the FEZF1 antibody detected the FEZF1 protein (arrow).

**FEZF1 Antibody (N-term) - Background**

Transcription repressor. Involved in the axonal projection and proper termination of olfactory sensory neurons (OSN). Plays a role in rostro-caudal patterning of the diencephalon and in prethalamic formation. Expression is required in OSN to cell-autonomously regulate OSN axon projections. Regulates non-cell-autonomously the layer formation of the olfactory bulb development and the interneurons. May be required for correct rostral migration of the interneuron progenitors (By similarity).

**FEZF1 Antibody (N-term) - References**

Maestrini, E., et al. Mol. Psychiatry 15(9):954-968(2010)

Song, I.S., et al. Cancer Res. 69(7):3131-3139(2009)