

CLIP3 Antibody (C-term)
Affinity Purified Rabbit Polyclonal Antibody (Pab)
Catalog # AP11084b**Specification**

CLIP3 Antibody (C-term) - Product Information

Application	WB, FC,E
Primary Accession	O96DZ5
Other Accession	B9EHT4 , NP_056341.1
Reactivity	Human
Predicted	Mouse
Host	Rabbit
Clonality	Polyclonal
Isotype	Rabbit IgG
Calculated MW	59560
Antigen Region	368-396

CLIP3 Antibody (C-term) - Additional Information**Gene ID** 25999**Other Names**

CAP-Gly domain-containing linker protein 3, Cytoplasmic linker protein 170-related 59 kDa protein, CLIP-170-related 59 kDa protein, CLIPR-59, CLIP3, CLIPR59

Target/Specificity

This CLIP3 antibody is generated from rabbits immunized with a KLH conjugated synthetic peptide between 368-396 amino acids from the C-terminal region of human CLIP3.

Dilution

WB~~1:1000

FC~~1:10~50

E~~Use at an assay dependent concentration.

Format

Purified polyclonal antibody supplied in PBS with 0.09% (W/V) sodium azide. This antibody is purified through a protein A column, followed by peptide affinity purification.

Storage

Maintain refrigerated at 2-8°C for up to 2 weeks. For long term storage store at -20°C in small aliquots to prevent freeze-thaw cycles.

Precautions

CLIP3 Antibody (C-term) is for research use only and not for use in diagnostic or therapeutic procedures.

CLIP3 Antibody (C-term) - Protein Information

Name CLIP3

Synonyms CLIPR59

Function Functions as a cytoplasmic linker protein. Involved in TGN- endosome dynamics. May modulate the cellular compartmentalization of AKT kinase family and promote its cell membrane localization, thereby playing a role in glucose transport in adipocytes.

Cellular Location

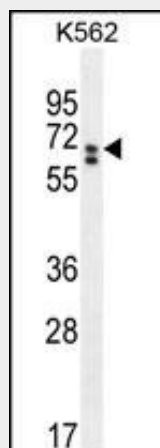
Cell membrane; Lipid-anchor. Cytoplasm. Golgi apparatus, Golgi stack. Note=Localized to Golgi stacks as well as on tubulovesicular elements juxtaposed to Golgi cisternae

CLIP3 Antibody (C-term) - Protocols

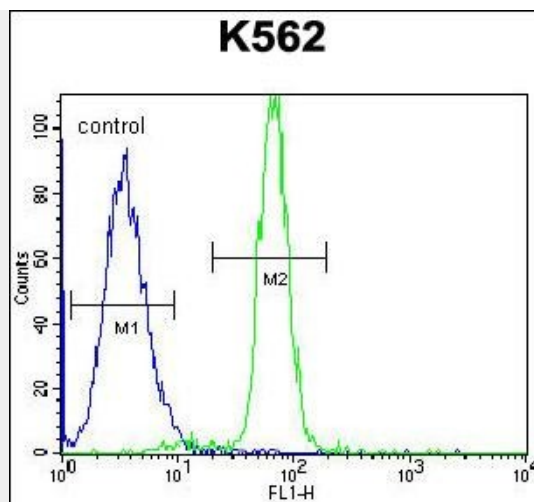
Provided below are standard protocols that you may find useful for product applications.

- [Western Blot](#)
- [Blocking Peptides](#)
- [Dot Blot](#)
- [Immunohistochemistry](#)
- [Immunofluorescence](#)
- [Immunoprecipitation](#)
- [Flow Cytometry](#)
- [Cell Culture](#)

CLIP3 Antibody (C-term) - Images



CLIP3 Antibody (C-term) (Cat. #AP11084b) western blot analysis in K562 cell line lysates (35ug/lane). This demonstrates the CLIP3 antibody detected the CLIP3 protein (arrow).



CLIP3 Antibody (C-term) (Cat. #AP11084b) flow cytometric analysis of K562 cells (right histogram) compared to a negative control cell (left histogram). FITC-conjugated goat-anti-rabbit secondary antibodies were used for the analysis.

CLIP3 Antibody (C-term) - Background

Functions as a cytoplasmic linker protein. Involved in TGN-endosome dynamics.

CLIP3 Antibody (C-term) - References

- Sorice, M., et al. PLoS ONE 5 (1), E8567 (2010) :
Ding, J., et al. Mol. Cell. Biol. 29(6):1459-1471(2009)
Lallemant-Breitenbach, V., et al. J. Biol. Chem. 279(39):41168-41178(2004)
Perez, F., et al. J. Cell Biol. 156(4):631-642(2002)