

PARS2 Antibody (C-term)
Purified Rabbit Polyclonal Antibody (Pab)
Catalog # AP11090b

Specification

PARS2 Antibody (C-term) - Product Information

Application	WB, IHC-P, FC,E
Primary Accession	Q7L3T8
Other Accession	NP_689481.2
Reactivity	Human, Mouse
Host	Rabbit
Clonality	Polyclonal
Isotype	Rabbit IgG
Antigen Region	390-417

PARS2 Antibody (C-term) - Additional Information

Gene ID 25973

Other Names

Probable proline--tRNA ligase, mitochondrial, Prolyl-tRNA synthetase, ProRS, PARS2

Target/Specificity

This PARS2 antibody is generated from rabbits immunized with a KLH conjugated synthetic peptide between 390-417 amino acids from the C-terminal region of human PARS2.

Dilution

WB~~1:1000
IHC-P~~1:50~100
FC~~1:10~50

Format

Purified polyclonal antibody supplied in PBS with 0.09% (W/V) sodium azide. This antibody is prepared by Saturated Ammonium Sulfate (SAS) precipitation followed by dialysis against PBS.

Storage

Maintain refrigerated at 2-8°C for up to 2 weeks. For long term storage store at -20°C in small aliquots to prevent freeze-thaw cycles.

Precautions

PARS2 Antibody (C-term) is for research use only and not for use in diagnostic or therapeutic procedures.

PARS2 Antibody (C-term) - Protein Information

Name PARS2 ([HGNC:30563](#))

Function Mitochondrial aminoacyl-tRNA synthetase that catalyzes the specific attachment of the

proline amino acid (aa) to the homologous transfer RNA (tRNA), further participating in protein synthesis. The reaction occurs in a two steps: proline is first activated by ATP to form Pro-AMP and then transferred to the acceptor end of tRNA(Pro).

Cellular Location

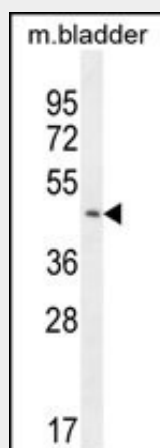
Mitochondrion matrix

PARS2 Antibody (C-term) - Protocols

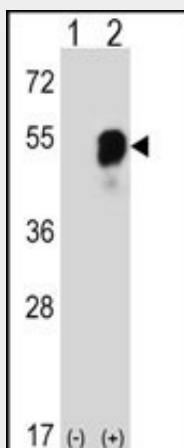
Provided below are standard protocols that you may find useful for product applications.

- [Western Blot](#)
- [Blocking Peptides](#)
- [Dot Blot](#)
- [Immunohistochemistry](#)
- [Immunofluorescence](#)
- [Immunoprecipitation](#)
- [Flow Cytometry](#)
- [Cell Culture](#)

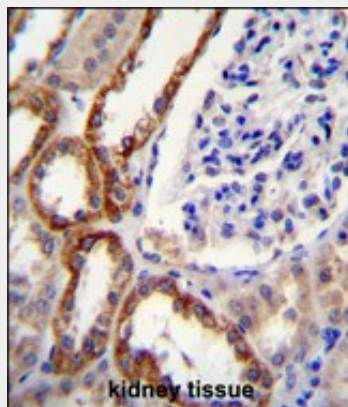
PARS2 Antibody (C-term) - Images



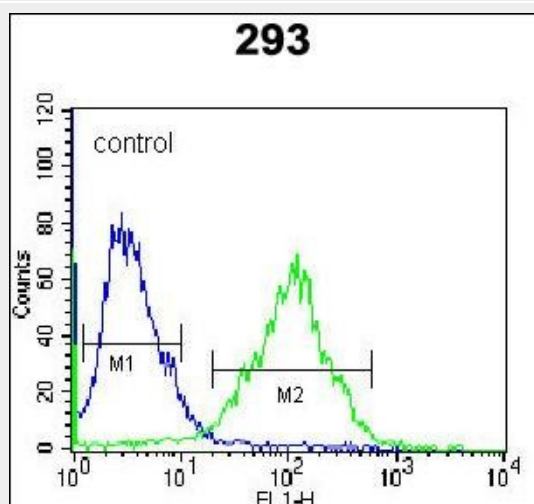
PARS2 Antibody (C-term) (Cat. #AP11090b) western blot analysis in mouse bladder tissue lysates (35ug/lane). This demonstrates the PARS2 antibody detected the PARS2 protein (arrow).



Western blot analysis of PARS2 (arrow) using rabbit polyclonal PARS2 Antibody (C-term) (Cat. #AP11090b). 293 cell lysates (2 ug/lane) either nontransfected (Lane 1) or transiently transfected (Lane 2) with the PARS2 gene.



PARS2 Antibody (C-term) (Cat. #AP11090b) immunohistochemistry analysis in formalin fixed and paraffin embedded human kidney tissue followed by peroxidase conjugation of the secondary antibody and DAB staining. This data demonstrates the use of PARS2 Antibody (C-term) for immunohistochemistry. Clinical relevance has not been evaluated.



PARS2 Antibody (C-term) (Cat. #AP11090b) flow cytometric analysis of 293 cells (right histogram) compared to a negative control cell (left histogram). FITC-conjugated goat-anti-rabbit secondary antibodies were used for the analysis.

PARS2 Antibody (C-term) - Background

Forms part of a macromolecular complex that catalyzes the attachment of specific amino acids to cognate tRNAs during protein synthesis. Modulates the secretion of AIMP1 and may be involved in generation of the inflammatory cytokine EMAP2 from AIMP1.

PARS2 Antibody (C-term) - References

- Lamesch, P., et al. Genomics 89(3):307-315(2007)
Bonnefond, L., et al. Biochemistry 44(12):4805-4816(2005)