

**GAL Antibody (Center)**  
**Affinity Purified Rabbit Polyclonal Antibody (Pab)**  
**Catalog # AP11103c****Specification**

---

**GAL Antibody (Center) - Product Information**

Application	IF, WB, IHC-P,E
Primary Accession	<a href="#">P22466</a>
Other Accession	<a href="#">NP_057057.2</a>
Reactivity	Human
Host	Rabbit
Clonality	Polyclonal
Isotype	Rabbit IgG
Calculated MW	13302
Antigen Region	48-79

**GAL Antibody (Center) - Additional Information****Gene ID** 51083**Other Names**

Galanin peptides, Galanin, Galanin message-associated peptide, GMAP, GAL, GAL1, GALN, GLNN

**Target/Specificity**

This GAL antibody is generated from rabbits immunized with a KLH conjugated synthetic peptide between 48-79 amino acids from the Central region of human GAL.

**Dilution**

IF~~1:10~50

WB~~1:1000

IHC-P~~1:50~100

**Format**

Purified polyclonal antibody supplied in PBS with 0.09% (W/V) sodium azide. This antibody is purified through a protein A column, followed by peptide affinity purification.

**Storage**

Maintain refrigerated at 2-8°C for up to 2 weeks. For long term storage store at -20°C in small aliquots to prevent freeze-thaw cycles.

**Precautions**

GAL Antibody (Center) is for research use only and not for use in diagnostic or therapeutic procedures.

**GAL Antibody (Center) - Protein Information****Name** GAL

**Synonyms** GAL1, GALN, GLNN

**Function** Endocrine hormone of the central and peripheral nervous systems that binds and activates the G protein-coupled receptors GALR1, GALR2, and GALR3. This small neuropeptide may regulate diverse physiologic functions including contraction of smooth muscle of the gastrointestinal and genitourinary tract, growth hormone and insulin release and adrenal secretion.

**Cellular Location**

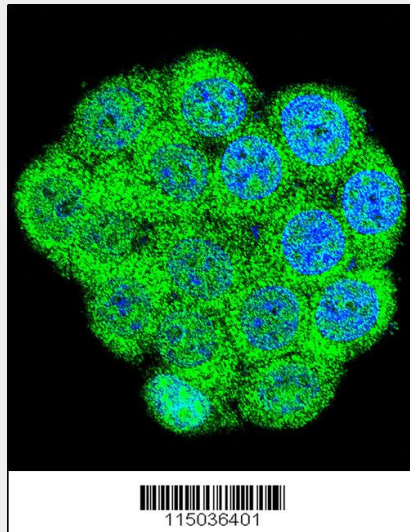
Secreted

**GAL Antibody (Center) - Protocols**

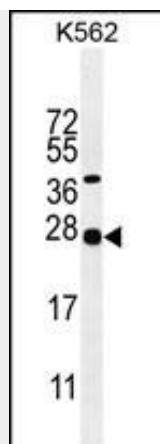
Provided below are standard protocols that you may find useful for product applications.

- [Western Blot](#)
- [Blocking Peptides](#)
- [Dot Blot](#)
- [Immunohistochemistry](#)
- [Immunofluorescence](#)
- [Immunoprecipitation](#)
- [Flow Cytometry](#)
- [Cell Culture](#)

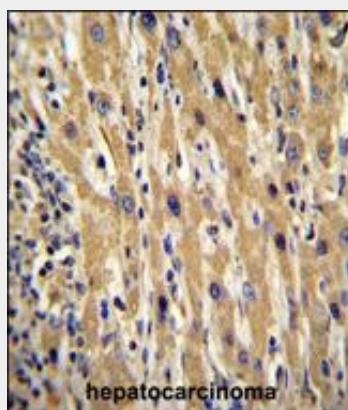
**GAL Antibody (Center) - Images**



Confocal immunofluorescent analysis of GAL Antibody (Center)(Cat#AP11103c) with 293 cell followed by Alexa Fluor 488-conjugated goat anti-rabbit IgG (green). DAPI was used to stain the cell nuclear (blue).



GAL Antibody (Center) (Cat. #AP11103c) western blot analysis in K562 cell line lysates (35ug/lane). This demonstrates the GAL antibody detected the GAL protein (arrow).



GAL Antibody (Center) (Cat. #AP11103c) immunohistochemistry analysis in formalin fixed and paraffin embedded human hepatocarcinoma followed by peroxidase conjugation of the secondary antibody and DAB staining. This data demonstrates the use of GAL Antibody (Center) for immunohistochemistry. Clinical relevance has not been evaluated.

### **GAL Antibody (Center) - Background**

Galanin is small neuropeptide that functions as a cellular messenger within the central and peripheral nervous systems, modulating diverse physiologic functions (Mechenthaler, 2008 [PubMed 18500643]).

### **GAL Antibody (Center) - References**

- Bailey, S.D., et al. Diabetes Care 33(10):2250-2253(2010)
- Ruano, G., et al. Pharmacogenomics 11(7):959-971(2010)
- Pinheiro, A.P., et al. Am. J. Med. Genet. B Neuropsychiatr. Genet. 153B (5), 1070-1080 (2010) :
- Unschuld, P.G., et al. Neuropsychopharmacology 35(7):1583-1592(2010)
- Talmud, P.J., et al. Am. J. Hum. Genet. 85(5):628-642(2009)