

DDX27 Antibody (C-term)
Affinity Purified Rabbit Polyclonal Antibody (Pab)
Catalog # AP11105b

Specification

DDX27 Antibody (C-term) - Product Information

| | |
|-------------------|--|
| Application | WB, IHC-P, FC,E |
| Primary Accession | Q96GQ7 |
| Other Accession | A1A4H6 , NP_060365.7 |
| Reactivity | Human |
| Predicted | Bovine |
| Host | Rabbit |
| Clonality | Polyclonal |
| Isotype | Rabbit IgG |
| Calculated MW | 86605 |
| Antigen Region | 770-796 |

DDX27 Antibody (C-term) - Additional Information

Gene ID 55661

Other Names

Probable ATP-dependent RNA helicase DDX27, DEAD box protein 27, DDX27, RHLP

Target/Specificity

This DDX27 antibody is generated from rabbits immunized with a KLH conjugated synthetic peptide between 770-796 amino acids from the C-terminal region of human DDX27.

Dilution

WB~~1:1000

IHC-P~~1:50~100

FC~~1:10~50

E~~Use at an assay dependent concentration.

Format

Purified polyclonal antibody supplied in PBS with 0.09% (W/V) sodium azide. This antibody is purified through a protein A column, followed by peptide affinity purification.

Storage

Maintain refrigerated at 2-8°C for up to 2 weeks. For long term storage store at -20°C in small aliquots to prevent freeze-thaw cycles.

Precautions

DDX27 Antibody (C-term) is for research use only and not for use in diagnostic or therapeutic procedures.

DDX27 Antibody (C-term) - Protein Information

Name DDX27

Synonyms cPERP-F {ECO:0000303|PubMed:20813266}, R

Function Probable ATP-dependent RNA helicase. Component of the nucleolar ribosomal RNA (rRNA) processing machinery that regulates 3' end formation of ribosomal 47S rRNA (PubMed:[25825154](#)).

Cellular Location

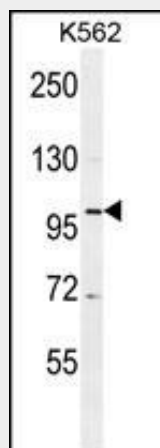
Nucleus, nucleolus. Chromosome. Note=Associates with 60S and 90S pre-ribosomal particles (PubMed:25825154)

DDX27 Antibody (C-term) - Protocols

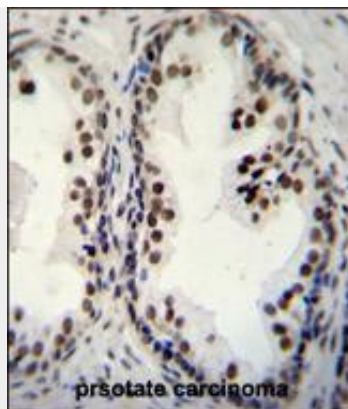
Provided below are standard protocols that you may find useful for product applications.

- [Western Blot](#)
- [Blocking Peptides](#)
- [Dot Blot](#)
- [Immunohistochemistry](#)
- [Immunofluorescence](#)
- [Immunoprecipitation](#)
- [Flow Cytometry](#)
- [Cell Culture](#)

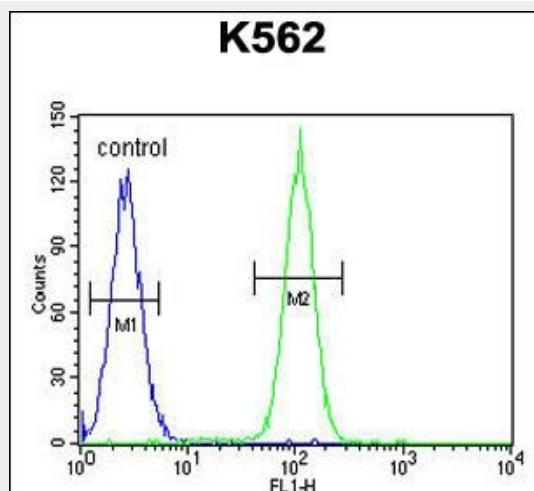
DDX27 Antibody (C-term) - Images



DDX27 Antibody (C-term) (Cat. #AP11105b) western blot analysis in K562 cell line lysates (35ug/lane). This demonstrates the DDX27 antibody detected the DDX27 protein (arrow).



DDX27 Antibody (C-term) (Cat. #AP11105b) immunohistochemistry analysis in formalin fixed and paraffin embedded human prostate carcinoma followed by peroxidase conjugation of the secondary antibody and DAB staining. This data demonstrates the use of DDX27 Antibody (C-term) for immunohistochemistry. Clinical relevance has not been evaluated.



DDX27 Antibody (C-term) (Cat. #AP11105b) flow cytometric analysis of K562 cells (right histogram) compared to a negative control cell (left histogram). FITC-conjugated goat-anti-rabbit secondary antibodies were used for the analysis.

DDX27 Antibody (C-term) - Background

DEAD box proteins, characterized by the conserved motif Asp-Glu-Ala-Asp (DEAD), are putative RNA helicases. They are implicated in a number of cellular processes involving alteration of RNA secondary structure such as translation initiation, nuclear and mitochondrial splicing, and ribosome and spliceosome assembly. Based on their distribution patterns, some members of this family are believed to be involved in embryogenesis, spermatogenesis, and cellular growth and division. This gene encodes a DEAD box protein, the function of which has not been determined. [provided by RefSeq].

DDX27 Antibody (C-term) - References

Deloukas, P., et al. Nature 414(6866):865-871(2001)