

FGD6 Antibody (C-term)
Affinity Purified Rabbit Polyclonal Antibody (Pab)
Catalog # AP11108b

Specification

FGD6 Antibody (C-term) - Product Information

Application	WB, IHC-P,E
Primary Accession	Q6ZV73
Other Accession	NP_060821.3
Reactivity	Human
Host	Rabbit
Clonality	Polyclonal
Isotype	Rabbit IgG
Antigen Region	1324-1352

FGD6 Antibody (C-term) - Additional Information

Gene ID 55785

Other Names

FYVE, RhoGEF and PH domain-containing protein 6, Zinc finger FYVE domain-containing protein 24, FGD6, KIAA1362, ZFYVE24

Target/Specificity

This FGD6 antibody is generated from rabbits immunized with a KLH conjugated synthetic peptide between 1324-1352 amino acids from the C-terminal region of human FGD6.

Dilution

WB~~1:1000
IHC-P~~1:10~50

Format

Purified polyclonal antibody supplied in PBS with 0.09% (W/V) sodium azide. This antibody is purified through a protein A column, followed by peptide affinity purification.

Storage

Maintain refrigerated at 2-8°C for up to 2 weeks. For long term storage store at -20°C in small aliquots to prevent freeze-thaw cycles.

Precautions

FGD6 Antibody (C-term) is for research use only and not for use in diagnostic or therapeutic procedures.

FGD6 Antibody (C-term) - Protein Information

Name FGD6

Synonyms KIAA1362, ZFYVE24

Function May activate CDC42, a member of the Ras-like family of Rho- and Rac proteins, by exchanging bound GDP for free GTP. May play a role in regulating the actin cytoskeleton and cell shape (By similarity).

Cellular Location

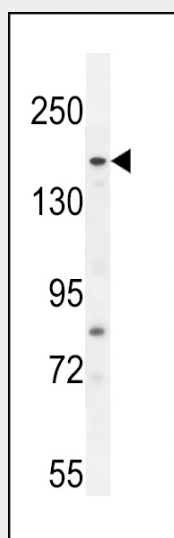
Cytoplasm. Cytoplasm, cytoskeleton

FGD6 Antibody (C-term) - Protocols

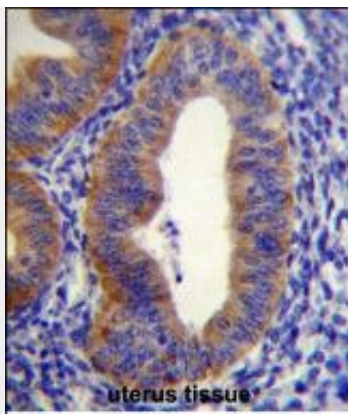
Provided below are standard protocols that you may find useful for product applications.

- [Western Blot](#)
- [Blocking Peptides](#)
- [Dot Blot](#)
- [Immunohistochemistry](#)
- [Immunofluorescence](#)
- [Immunoprecipitation](#)
- [Flow Cytometry](#)
- [Cell Culture](#)

FGD6 Antibody (C-term) - Images



FGD6 Antibody (C-term) (Cat. #AP11108b) western blot analysis in A549 cell line lysates (35ug/lane). This demonstrates the FGD6 antibody detected the FGD6 protein (arrow).



FGD6 Antibody (C-term) (Cat. #AP11108b) immunohistochemistry analysis in formalin fixed and paraffin embedded human uterus tissue followed by peroxidase conjugation of the secondary antibody and DAB staining. This data demonstrates the use of FGD6 Antibody (C-term) for immunohistochemistry. Clinical relevance has not been evaluated.

FGD6 Antibody (C-term) - Background

Component of clathrin-coated pits and vesicles, that may link the endocytic machinery to the actin cytoskeleton. Binds 3-phosphoinositides (via ENTH domain). May act through the ENTH domain to promote cell survival by stabilizing receptor tyrosine kinases following ligand-induced endocytosis.

FGD6 Antibody (C-term) - References

Barrios-Rodiles, M., et al. Science 307(5715):1621-1625(2005)
Jin, J., et al. Curr. Biol. 14(16):1436-1450(2004)