

**HNF1B Antibody (C-term)**  
**Affinity Purified Rabbit Polyclonal Antibody (Pab)**  
**Catalog # AP11114b****Specification**

---

**HNF1B Antibody (C-term) - Product Information**

|                   |   |
|-------------------|---|
| Application       | WB,E  |
| Primary Accession | <a href="#">P35680</a>  |
| Other Accession   | <a href="#">P23899</a> , <a href="#">P27889</a> , <a href="#">NP_000449.1</a> ,<br><a href="#">NP_001159395.1</a> |
| Reactivity        | Human   |
| Predicted         | Mouse, Rat  |
| Host              | Rabbit  |
| Clonality         | Polyclonal  |
| Isotype           | Rabbit IgG  |
| Calculated MW     | 61324   |
| Antigen Region    | 498-529   |

**HNF1B Antibody (C-term) - Additional Information****Gene ID** 6928**Other Names**

Hepatocyte nuclear factor 1-beta, HNF-1-beta, HNF-1B, Homeoprotein LFB3, Transcription factor 2, TCF-2, Variant hepatic nuclear factor 1, vHNF1, HNF1B, TCF2

**Target/Specificity**

This HNF1B antibody is generated from rabbits immunized with a KLH conjugated synthetic peptide between 498-529 amino acids from the C-terminal region of human HNF1B.

**Dilution**

WB~~1:1000

E~~Use at an assay dependent concentration.

**Format**

Purified polyclonal antibody supplied in PBS with 0.09% (W/V) sodium azide. This antibody is purified through a protein A column, followed by peptide affinity purification.

**Storage**

Maintain refrigerated at 2-8°C for up to 2 weeks. For long term storage store at -20°C in small aliquots to prevent freeze-thaw cycles.

**Precautions**

HNF1B Antibody (C-term) is for research use only and not for use in diagnostic or therapeutic procedures.

**HNF1B Antibody (C-term) - Protein Information**

**Name** HNF1B

**Synonyms** TCF2

**Function** Transcription factor that binds to the inverted palindrome 5'-GTTAATNATTAAC-3' (PubMed:[17924661](#), PubMed:[7900999](#)). Binds to the FPC element in the cAMP regulatory unit of the PLAU gene (By similarity). Transcriptional activity is increased by coactivator PCBD1 (PubMed:[24204001](#)).

**Cellular Location**

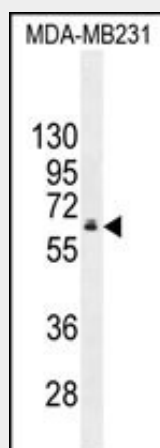
Nucleus.

### HNF1B Antibody (C-term) - Protocols

Provided below are standard protocols that you may find useful for product applications.

- [Western Blot](#)
- [Blocking Peptides](#)
- [Dot Blot](#)
- [Immunohistochemistry](#)
- [Immunofluorescence](#)
- [Immunoprecipitation](#)
- [Flow Cytometry](#)
- [Cell Culture](#)

### HNF1B Antibody (C-term) - Images



HNF1B Antibody (C-term) (Cat. #AP11114b) western blot analysis in MDA-MB231 cell line lysates (35ug/lane). This demonstrates the HNF1B antibody detected the HNF1B protein (arrow).

### HNF1B Antibody (C-term) - Background

This gene encodes a member of the homeodomain-containing superfamily of transcription factors. The protein binds to DNA as either a homodimer, or a heterodimer with the related protein hepatocyte nuclear factor 1-alpha. The gene has been shown to function in nephron development, and regulates development of the embryonic pancreas. Mutations in this gene result in renal cysts and diabetes syndrome and noninsulin-dependent diabetes mellitus, and expression of this gene is altered in some types of cancer.

Multiple transcript variants encoding different isoforms have been found for this gene.

#### **HNF1B Antibody (C-term) - References**

Jablonski, K.A., et al. Diabetes 59(10):2672-2681(2010)  
Oram, R.A., et al. Am. J. Obstet. Gynecol. 203 (4), 364 (2010) :  
Takata, R., et al. Nat. Genet. 42(9):751-754(2010)  
Liu, H., et al. Prostate (2010) In press :  
Maestro, M.A., et al. Endocr Dev 12, 33-45 (2007) :