

CTSZ Antibody (N-term)
Affinity Purified Rabbit Polyclonal Antibody (Pab)
Catalog # AP11116a**Specification**

CTSZ Antibody (N-term) - Product Information

Application	WB,E
Primary Accession	O9UBR2
Other Accession	NP_001327.2
Reactivity	Human
Host	Rabbit
Clonality	Polyclonal
Isotype	Rabbit IgG
Calculated MW	33868
Antigen Region	22-50

CTSZ Antibody (N-term) - Additional Information**Gene ID** 1522**Other Names**

Cathepsin Z, Cathepsin P, Cathepsin X, CTSZ

Target/Specificity

This CTSZ antibody is generated from rabbits immunized with a KLH conjugated synthetic peptide between 22-50 amino acids from the N-terminal region of human CTSZ.

Dilution

WB~~1:1000

E~~Use at an assay dependent concentration.

Format

Purified polyclonal antibody supplied in PBS with 0.09% (W/V) sodium azide. This antibody is purified through a protein A column, followed by peptide affinity purification.

Storage

Maintain refrigerated at 2-8°C for up to 2 weeks. For long term storage store at -20°C in small aliquots to prevent freeze-thaw cycles.

Precautions

CTSZ Antibody (N-term) is for research use only and not for use in diagnostic or therapeutic procedures.

CTSZ Antibody (N-term) - Protein Information**Name** CTSZ**Function** Exhibits carboxy-monopeptidase as well as carboxy-dipeptidase activity

(PubMed:[10504234](#)). Capable of producing kinin potentiating peptides (By similarity).

Cellular Location

Lysosome.

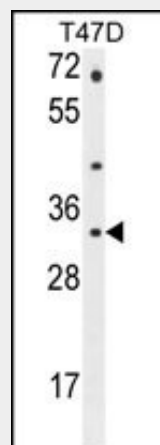
Tissue Location

Widely expressed..

CTSZ Antibody (N-term) - Protocols

Provided below are standard protocols that you may find useful for product applications.

- [Western Blot](#)
- [Blocking Peptides](#)
- [Dot Blot](#)
- [Immunohistochemistry](#)
- [Immunofluorescence](#)
- [Immunoprecipitation](#)
- [Flow Cytometry](#)
- [Cell Culture](#)

CTSZ Antibody (N-term) - Images

CTSZ Antibody (N-term) (Cat. #AP11116a) western blot analysis in T47D cell line lysates (35ug/lane). This demonstrates the CTSZ antibody detected the CTSZ protein (arrow).

CTSZ Antibody (N-term) - Background

The protein encoded by this gene is a lysosomal cysteine proteinase and member of the peptidase C1 family. It exhibits both carboxy-monopeptidase and carboxy-dipeptidase activities. The encoded protein has also been known as cathepsin X and cathepsin P. This gene is expressed ubiquitously in cancer cell lines and primary tumors and, like other members of this family, may be involved in tumorigenesis.

CTSZ Antibody (N-term) - References

Starr, J.M., et al. Mech. Ageing Dev. 129(12):745-751(2008)
Cooke, G.S., et al. Am. J. Respir. Crit. Care Med. 178(2):203-207(2008)

Harris, S.E., et al. BMC Genet. 8, 43 (2007) :
Lechner, A.M., et al. J. Biol. Chem. 281(51):39588-39597(2006)
Sleat, D.E., et al. Mol. Cell Proteomics 5(4):686-701(2006)