

CALCA Antibody (Center)
Affinity Purified Rabbit Polyclonal Antibody (Pab)
Catalog # AP11119c

Specification

CALCA Antibody (Center) - Product Information

Application	WB, IHC-P,E
Primary Accession	P06881
Other Accession	NP_001029125.1
Reactivity	Human
Host	Rabbit
Clonality	Polyclonal
Isotype	Rabbit IgG
Antigen Region	56-83

CALCA Antibody (Center) - Additional Information

Gene ID 796

Other Names

Calcitonin gene-related peptide 1, Alpha-type CGRP, Calcitonin gene-related peptide I, CGRP-I, CALCA, CALC1

Target/Specificity

This CALCA antibody is generated from rabbits immunized with a KLH conjugated synthetic peptide between 56-83 amino acids from the Central region of human CALCA.

Dilution

WB~~1:2000
IHC-P~~1:50~100

Format

Purified polyclonal antibody supplied in PBS with 0.09% (W/V) sodium azide. This antibody is purified through a protein A column, followed by peptide affinity purification.

Storage

Maintain refrigerated at 2-8°C for up to 2 weeks. For long term storage store at -20°C in small aliquots to prevent freeze-thaw cycles.

Precautions

CALCA Antibody (Center) is for research use only and not for use in diagnostic or therapeutic procedures.

CALCA Antibody (Center) - Protein Information

Name CALCA

Synonyms CALC1

Function CGRP induces vasodilation. It dilates a variety of vessels including the coronary, cerebral and systemic vasculature. Its abundance in the CNS also points toward a neurotransmitter or neuromodulator role. It also elevates platelet cAMP.

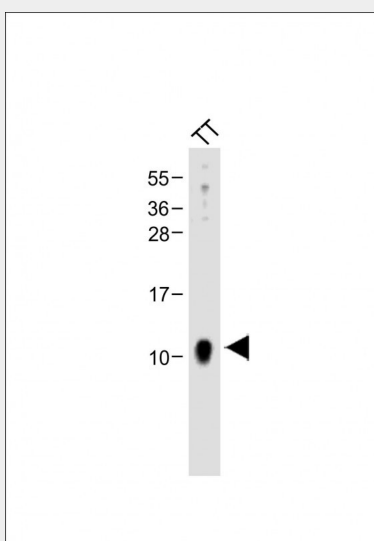
Cellular Location
Secreted.

CALCA Antibody (Center) - Protocols

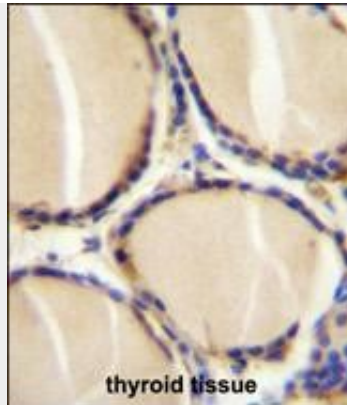
Provided below are standard protocols that you may find useful for product applications.

- [Western Blot](#)
- [Blocking Peptides](#)
- [Dot Blot](#)
- [Immunohistochemistry](#)
- [Immunofluorescence](#)
- [Immunoprecipitation](#)
- [Flow Cytometry](#)
- [Cell Culture](#)

CALCA Antibody (Center) - Images



Anti-CALCA Antibody (Center) at 1:2000 dilution + TT whole cell lysate Lysates/proteins at 20 µg per lane. Secondary Goat Anti-Rabbit IgG, (H+L), Peroxidase conjugated at 1/10000 dilution. Predicted band size : 14 kDa Blocking/Dilution buffer: 5% NFDm/TBST.



CALCA Antibody (Center) (Cat. #AP11119c) immunohistochemistry analysis in formalin fixed and paraffin embedded human thyroid tissue followed by peroxidase conjugation of the secondary antibody and DAB staining. This data demonstrates the use of CALCA Antibody (Center) for immunohistochemistry. Clinical relevance has not been evaluated.

CALCA Antibody (Center) - Background

This gene encodes the peptide hormones calcitonin, calcitonin gene-related peptide and katacalcin by tissue-specific alternative RNA splicing of the gene transcripts and cleavage of inactive precursor proteins. Calcitonin is involved in calcium regulation and acts to regulate phosphorus metabolism. Calcitonin gene-related peptide functions as a vasodilator while katacalcin is a calcium-lowering peptide. Multiple transcript variants encoding different isoforms have been found for this gene.

CALCA Antibody (Center) - References

Giroux, S., et al. Bone 47(5):975-981(2010)
Bailey, S.D., et al. Diabetes Care 33(10):2250-2253(2010)
Lee, J.Y., et al. Korean J Lab Med 30(4):406-413(2010)
Giovanella, L., et al. Clin. Chem. Lab. Med. 48(8):1163-1165(2010)
Hatzistilianou, M. ScientificWorldJournal 10, 1941-1946 (2010) :