

OTOA Antibody (N-term)
Affinity Purified Rabbit Polyclonal Antibody (Pab)
Catalog # AP11149a**Specification**

OTOA Antibody (N-term) - Product Information

Application	WB, IHC-P,E
Primary Accession	Q7RTW8
Other Accession	NP_733764.1 , NP_001155155.1
Reactivity	Mouse
Host	Rabbit
Clonality	Polyclonal
Isotype	Rabbit IgG
Calculated MW	128533
Antigen Region	92-120

OTOA Antibody (N-term) - Additional Information**Gene ID** 146183**Other Names**
Otoancorin, OTOA**Target/Specificity**

This OTOA antibody is generated from rabbits immunized with a KLH conjugated synthetic peptide between 92-120 amino acids from the N-terminal region of human OTOA.

Dilution

WB~~1:1000
IHC-P~~1:10~50
E~~Use at an assay dependent concentration.

Format

Purified polyclonal antibody supplied in PBS with 0.09% (W/V) sodium azide. This antibody is purified through a protein A column, followed by peptide affinity purification.

Storage

Maintain refrigerated at 2-8°C for up to 2 weeks. For long term storage store at -20°C in small aliquots to prevent freeze-thaw cycles.

Precautions

OTOA Antibody (N-term) is for research use only and not for use in diagnostic or therapeutic procedures.

OTOA Antibody (N-term) - Protein Information**Name** OTOA

Function May act as an adhesion molecule.

Cellular Location

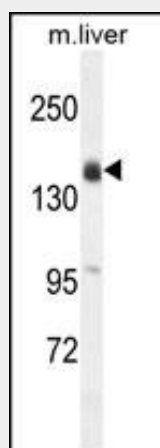
Apical cell membrane; Lipid-anchor, GPI-anchor; Extracellular side. Secreted, extracellular space, extracellular matrix. Note=At the interface between the apical surface of the epithelia and the overlying acellular gel of the tectorial and otoconial membranes.

OTOA Antibody (N-term) - Protocols

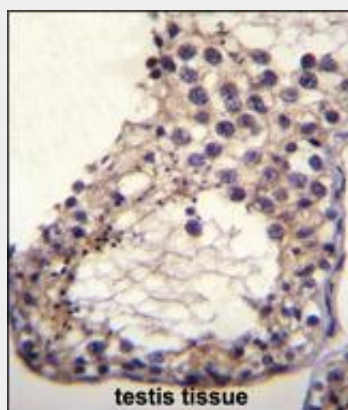
Provided below are standard protocols that you may find useful for product applications.

- [Western Blot](#)
- [Blocking Peptides](#)
- [Dot Blot](#)
- [Immunohistochemistry](#)
- [Immunofluorescence](#)
- [Immunoprecipitation](#)
- [Flow Cytometry](#)
- [Cell Culture](#)

OTOA Antibody (N-term) - Images



OTOA Antibody (N-term) (Cat. #AP11149a) western blot analysis in mouse liver tissue lysates (35ug/lane). This demonstrates the OTOA antibody detected the OTOA protein (arrow).



OTOA Antibody (N-term) (Cat. #AP11149a) immunohistochemistry analysis in formalin fixed and

paraffin embedded human testis tissue followed by peroxidase conjugation of the secondary antibody and DAB staining. This data demonstrates the use of OTOA Antibody (N-term) for immunohistochemistry. Clinical relevance has not been evaluated.

OTOA Antibody (N-term) - Background

The protein encoded by this gene is specifically expressed in the inner ear, and is located at the interface between the apical surface of the inner ear sensory epithelia and their overlying acellular gels. It is proposed that this protein is involved in the attachment of the inner ear acellular gels to the apical surface of the underlying nonsensory cells. Mutations in this gene are associated with autosomal recessive deafness type 22 (DFNB22). Alternatively spliced transcript variants encoding different isoforms have been found for this gene. [provided by RefSeq].

OTOA Antibody (N-term) - References

Shahin, H., et al. Eur. J. Hum. Genet. 18(4):407-413(2010)
Rose, J. Phd, et al. Mol. Med. (2010) In press :
Hofmann, O., et al. Proc. Natl. Acad. Sci. U.S.A. 105(51):20422-20427(2008)
Zwaenepoel, I., et al. Proc. Natl. Acad. Sci. U.S.A. 99(9):6240-6245(2002)