

**C1QL3 Antibody (N-term)**  
**Affinity Purified Rabbit Polyclonal Antibody (Pab)**  
**Catalog # AP11158a****Specification**

---

**C1QL3 Antibody (N-term) - Product Information**

Application	WB,E
Primary Accession	<a href="#">Q5VWW1</a>
Other Accession	<a href="#">Q9ESN4</a> , <a href="#">NP_001010908.1</a>
Reactivity	Mouse
Host	Rabbit
Clonality	Polyclonal
Isotype	Rabbit IgG
Calculated MW	26719
Antigen Region	22-50

**C1QL3 Antibody (N-term) - Additional Information****Gene ID** 389941**Other Names**

Complement C1q-like protein 3, C1q and tumor necrosis factor-related protein 13, C1q/TNF-related protein 13, C1QL3, CTRP13

**Target/Specificity**

This C1QL3 antibody is generated from rabbits immunized with a KLH conjugated synthetic peptide between 22-50 amino acids from the N-terminal region of human C1QL3.

**Dilution**

WB~~1:1000

E~~Use at an assay dependent concentration.

**Format**

Purified polyclonal antibody supplied in PBS with 0.09% (W/V) sodium azide. This antibody is purified through a protein A column, followed by peptide affinity purification.

**Storage**

Maintain refrigerated at 2-8°C for up to 2 weeks. For long term storage store at -20°C in small aliquots to prevent freeze-thaw cycles.

**Precautions**

C1QL3 Antibody (N-term) is for research use only and not for use in diagnostic or therapeutic procedures.

**C1QL3 Antibody (N-term) - Protein Information****Name** C1QL3

## Synonyms CTRP13

**Function** May regulate the number of excitatory synapses that are formed on hippocampus neurons. Has no effect on inhibitory synapses (By similarity). Plays a role in glucose homeostasis. Via AMPK signaling pathway, stimulates glucose uptake in adipocytes, myotubes and hepatocytes and enhances insulin-stimulated glucose uptake. In a hepatoma cell line, reduces the expression of gluconeogenic enzymes G6PC1 and PCK1 and hence decreases de novo glucose production (By similarity).

**Cellular Location**  
Secreted.

## Tissue Location

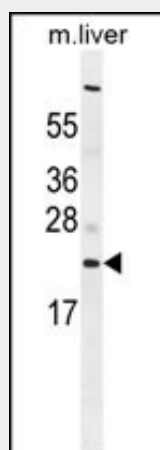
Highly expressed in adipose tissue, with expression levels at least 2 orders of magnitude higher than in other tissues, including brain and kidney.

## C1QL3 Antibody (N-term) - Protocols

Provided below are standard protocols that you may find useful for product applications.

- [Western Blot](#)
- [Blocking Peptides](#)
- [Dot Blot](#)
- [Immunohistochemistry](#)
- [Immunofluorescence](#)
- [Immunoprecipitation](#)
- [Flow Cytometry](#)
- [Cell Culture](#)

## C1QL3 Antibody (N-term) - Images



C1QL3 Antibody (N-term) (Cat. #AP11158a) western blot analysis in mouse liver tissue lysates (35ug/lane). This demonstrates the C1QL3 antibody detected the C1QL3 protein (arrow).

## C1QL3 Antibody (N-term) - Background

May have S-adenosyl-L-methionine-dependent methyl-transferase activity (Potential).

## C1QL3 Antibody (N-term) - References

Deloukas, P., et al. Nature 429(6990):375-381(2004)  
Koide, T., et al. J. Biol. Chem. 275(36):27957-27963(2000)