

**MBD3L2 Antibody (C-term)**  
**Affinity Purified Rabbit Polyclonal Antibody (Pab)**  
**Catalog # AP11160b****Specification**

---

**MBD3L2 Antibody (C-term) - Product Information**

Application	WB,E
Primary Accession	<a href="#">Q8NHZ7</a>
Other Accession	<a href="#">NP_653215.2</a>
Reactivity	Human
Host	Rabbit
Clonality	Polyclonal
Isotype	Rabbit IgG
Calculated MW	22994
Antigen Region	176-204

**MBD3L2 Antibody (C-term) - Additional Information****Gene ID** 125997**Other Names**

Methyl-CpG-binding domain protein 3-like 2, MBD3-like protein 2, MBD3L2

**Target/Specificity**

This MBD3L2 antibody is generated from rabbits immunized with a KLH conjugated synthetic peptide between 176-204 amino acids from the C-terminal region of human MBD3L2.

**Dilution**

WB~~1:1000

**Format**

Purified polyclonal antibody supplied in PBS with 0.09% (W/V) sodium azide. This antibody is purified through a protein A column, followed by peptide affinity purification.

**Storage**

Maintain refrigerated at 2-8°C for up to 2 weeks. For long term storage store at -20°C in small aliquots to prevent freeze-thaw cycles.

**Precautions**

MBD3L2 Antibody (C-term) is for research use only and not for use in diagnostic or therapeutic procedures.

**MBD3L2 Antibody (C-term) - Protein Information****Name** MBD3L2**Function** May displace the NuRD complex from chromatin.

**Cellular Location**

Nucleus.

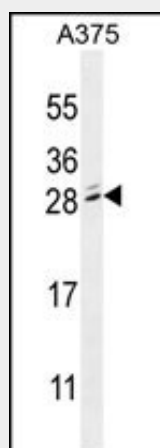
**Tissue Location**

Detected at low levels in several somatic tissues (PubMed:12504854, PubMed:15701600). Highly expressed in the ovarian teratocarcinoma cell line PA-1 (PubMed:12504854)

**MBD3L2 Antibody (C-term) - Protocols**

Provided below are standard protocols that you may find useful for product applications.

- [Western Blot](#)
- [Blocking Peptides](#)
- [Dot Blot](#)
- [Immunohistochemistry](#)
- [Immunofluorescence](#)
- [Immunoprecipitation](#)
- [Flow Cytometry](#)
- [Cell Culture](#)

**MBD3L2 Antibody (C-term) - Images**

MBD3L2 Antibody (C-term) (Cat. #AP11160b) western blot analysis in A375 cell line lysates (35ug/lane). This demonstrates the MBD3L2 antibody detected the MBD3L2 protein (arrow).

**MBD3L2 Antibody (C-term) - Background**

This gene encodes a protein that is related to methyl-CpG-binding proteins but lacks the methyl-CpG binding domain. The protein has been found in germ cell tumors and some somatic tissues.

**MBD3L2 Antibody (C-term) - References**

Jin, S.G., et al. J. Biol. Chem. 280(13):12700-12709(2005)  
Jiang, C.L., et al. Genomics 80(6):621-629(2002)