

**C4orf46 Antibody (C-term)**  
**Affinity Purified Rabbit Polyclonal Antibody (Pab)**  
**Catalog # AP11163B****Specification**

---

**C4orf46 Antibody (C-term) - Product Information**

Application	WB,E
Primary Accession	<a href="#">Q504U0</a>
Other Accession	<a href="#">NP_001008394.1</a>
Reactivity	Mouse
Host	Rabbit
Clonality	Polyclonal
Isotype	Rabbit IgG
Calculated MW	11899
Antigen Region	84-113

**C4orf46 Antibody (C-term) - Additional Information****Gene ID** 201725**Other Names**

Uncharacterized protein C4orf46, C4orf46

**Target/Specificity**

This C4orf46 antibody is generated from rabbits immunized with a KLH conjugated synthetic peptide between 84-113 amino acids from the C-terminal region of human C4orf46.

**Dilution**

WB~~1:1000

**Format**

Purified polyclonal antibody supplied in PBS with 0.09% (W/V) sodium azide. This antibody is purified through a protein A column, followed by peptide affinity purification.

**Storage**

Maintain refrigerated at 2-8°C for up to 2 weeks. For long term storage store at -20°C in small aliquots to prevent freeze-thaw cycles.

**Precautions**

C4orf46 Antibody (C-term) is for research use only and not for use in diagnostic or therapeutic procedures.

**C4orf46 Antibody (C-term) - Protein Information****Name** C4orf46**Synonyms** RCDG1

**Cellular Location**

Cytoplasm.

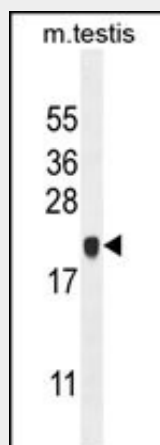
**Tissue Location**

Expressed in the kidney, in epithelial cells in both proximal tubules and distal convoluted tubules

**C4orf46 Antibody (C-term) - Protocols**

Provided below are standard protocols that you may find useful for product applications.

- [Western Blot](#)
- [Blocking Peptides](#)
- [Dot Blot](#)
- [Immunohistochemistry](#)
- [Immunofluorescence](#)
- [Immunoprecipitation](#)
- [Flow Cytometry](#)
- [Cell Culture](#)

**C4orf46 Antibody (C-term) - Images**

C4orf46 Antibody (C-term) (Cat. #AP11163b) western blot analysis in mouse testis tissue lysates (35ug/lane). This demonstrates the C4orf46 antibody detected the C4orf46 protein (arrow).

**C4orf46 Antibody (C-term) - Background**

Transcription factor involved in somitogenesis and neurogenesis. Required for the maintenance and differentiation of particular elements of the axial skeleton. May act upstream of PAX9. Plays a role in controlling the development of connections of hypothalamic neurons to pituitary elements, allowing central neurons to reach the peripheral blood circulation and to deliver hormones for control of peripheral functions (By similarity).

**C4orf46 Antibody (C-term) - References**

Illig, T., et al. Nat. Genet. 42(2):137-141(2010)